

Senate
Senate Chamber
Room 245 Engineering Building
WEDNESDAY, September 7, 2005
1:30 p.m.
Regrets call 474-6892

AGENDA

I MATTERS TO BE CONSIDERED IN CLOSED SESSION

II MATTERS RECOMMENDED FOR CONCURRENCE WITHOUT DEBATE

III MATTERS FORWARDED FOR INFORMATION

1. *In Memoriam* Dean Emeritus Fred Stambrook Page 17
2. *In Memoriam* Professor Moshe (Martin) Stern Page 18
3. *In Memoriam* Professor Kedar Tandon Page 19
4. Correspondence from the Vice-
President (Academic) Provost re:
New programs in Italian Studies Page 20
5. Report of the Senate Committee on Awards – Part A Page 21

IV REPORT OF THE PRESIDENT

V QUESTION PERIOD

Senators are reminded that questions shall normally be submitted in writing to the University Secretary no later than 10:00 a.m. of the day preceding the meeting.

VI CONSIDERATION OF THE MINUTES OF THE MEETING OF JUNE 29, 2005

VII BUSINESS ARISING FROM THE MINUTES - NONE

VIII REPORTS OF THE SENATE EXECUTIVE COMMITTEE AND THE SENATE PLANNING AND PRIORITIES COMMITTEE

1. Report of the Senate Executive Committee Page 35
2. Report of the Senate
Planning and Priorities Committee

The Chair will make an oral report on the Committee's activities.

**IX REPORTS OF OTHER COMMITTEES OF SENATE,
FACULTY AND SCHOOL COUNCILS**

1. Report of the Senate Committee on Appeals

The Chair will make an oral report on the Committee's activities.

**2. Report of the Faculty of Graduate Studies on graduate
program proposal-Ph.D in Design and Planning**

Page 36

**a) Report of the Senate
Planning and Priorities Committee**

Page 116

3. Report of the Senate Committee on the Calendar

Page 120

4. Report of the Senate Committee on Awards - Part B

Page 121

5. Change of Unit Name: Continuing Education Division

Page 127

X ADDITIONAL BUSINESS

XI ADJOURNMENT

Please Call Regrets to 474-6892.

/nis

PROFESSOR FRED STAMBROOK, 1929 – 2005

Fred Stambrook died at the age of 75 on Friday 15 July 2005. He came to teach History in the History department of the University of Manitoba in 1968. He had a B.A. (Hons) in History from Oxford, a B.Sc.Econ.(Hons) from the London School of Economics and a PhD in International History from the University of London. Before coming to Canada he was a Lecturer in History at the University of Sydney in Australia.

Fred's research interest was in inter-war European diplomacy. As a graduate student he worked in the British Foreign Office on the translation of captured German Foreign Office war documents and served on the Editorial Board of the multi-volume *Documents on German Foreign Policy, 1918-1945*. He had numerous publications and taught European history throughout his career. Taking a half-time appointment five years ago, at the time of his death he was preparing to teach two courses this coming Fall, on Western Civilization, and on the Balkans in the Twentieth Century.

Fred had many administrative responsibilities at the University of Manitoba, and his positions included terms as Associate Dean of Arts, Dean of Arts, and a nine-year appointment as Vice-President Academic. In 2004 he was awarded the title of Dean Emeritus.

Fred had a colourful cosmopolitan career and used stories from his personal experience to bring history to life for his students. Born in Vienna in 1929, after his mother's death he was raised by grandparents until 1939, when he was sent on his own to England. In his personal reflections of the rail journey across Europe, Fred noted he was "one of the fortunate ones. My grandparents and great grandmother perished in the Theresienstadt concentration camp." He was one of the ten thousand, mainly Jewish, children known collectively as the *Kindertransport*, allowed into Britain as refugees from Nazi Germany.

Fred's scholarly interests more recently turned to pre-1914 Ukrainian, Polish and Jewish settlers in Manitoba, and to Jews in Bukovina. With his wife, historian Dr Stella Hryniuk, he travelled widely and they collaborated on work together. His most recent article was published last year, "National and Other identities in Bukovina in late Austrian Times," in the *Austrian History Yearbook*.

An avid sportsman, and active in the wider community, Fred was a founding member of the Manitoba Minor Soccer Association and was honoured as Life Member of the Canadian Soccer Association. He was inducted into the Manitoba Jewish Sports Hall of Fame and the Manitoba Sports Hall of Fame. He was a Board Member of the Jewish Heritage Centre

His colleagues and students will miss him greatly, and we extend sincere sympathy to his family.

Mary Kinnear
Head, History
18 July 2005

In Memoriam: Dr. M. S. Stern (Religion)

Dr. Moshe (Martin) Stern, formerly of the Department of Religion, passed away this past weekend in Montréal, after a lengthy illness. He leaves his wife, Sydell, and two adult children, Micki and Yitzi, their spouses and three grandchildren who Moshe absolutely adored. Moshe had been hospitalized for most of the past three years and had to be moved recently by air ambulance to Montréal, as was his wish. As a result, he had a few happy months living in proximity to his daughter, Micki, son-in-law, Elie, and his three grandchildren.

Moshe received his BA from Brooklyn College, CUNY in 1966, and PhD in Islamic Studies from UCLA in 1977. He was ordained in 1966 (Yeshivat Eretz, Israel). After a number of Lecturer appointments in the Department of Near Eastern and Judaic Studies at the University of Manitoba between 1970 and 1977, Moshe joined the Department of Religion as an Assistant Professor in 1978. He twice served as Acting Head of Near Eastern and Judaic Studies (1981-82 and 1987-88), and, when that Department was discontinued, he moved full-time to the Department of Religion in 1989. He was promoted to Associate Professor in 1984.

Moshe's research interests extended to medieval and contemporary Islam; Islamic secularization; Islamic-Jewish relations; Judaism in Canada; and Religion and Politics in the Middle East. He published *Al-Ghazzali On Repentance* (New Delhi, 1990); academic essays, such as "Muhammad and Joseph: A Study of Koranic Narrative" (*Journal of Near Eastern Studies*, 1985); and numerous book reviews. He also presented many papers, including such studies as "The Jewish Presence in Seventh Century Arabia" (Boston, 1979) and "Jewish Studies in Canada" (Québec, 1980). Moshe was most active, however, in forging university-community outreach: he was a frequent commentator on CBC and CTV and he published extensively in the popular press and in local periodicals (including *Manitoba Beaver*, *The Jewish Post and News*, and *The Winnipeg Free Press*). He was also an active contributor to *The National Jewish Post and Opinion* (Indianapolis), *Bnai Brith Covenant* (Toronto); and *The Jewish Press* (New York). Moshe contributed significantly to the community through service on the Board of Directors of the Multiple Sclerosis Society of Canada; the Education Committee of the Torah Academy of Winnipeg; the Torah Education Fund of Canada (President); Board of Governors, Maimonides College (Ontario); Campus Committee, Winnipeg Jewish Community Council; Advisory Board, Family Institute of Canada; Committee on Yiddish, Canadian Jewish Congress.

Moshe Stern's extensive service to the University of Manitoba included years on University Senate, on the Faculty of Arts Discipline Committee, and the Joint Discipline Committee for the JDP in Religion. He was a stalwart teacher for the Department of Religion, carrying heavy student loads at the introductory level for a number of years and doing course-manual development work. He will be sadly missed.

IN REMEMBRANCE

KEDAR TANDON

It is with regret that we learned of the passing on July 16, 2005 of Dr. Kedar Tandon. Dr. Tandon has been serving the Department of Mechanical and Manufacturing Engineering (ME/MF) since 1988. Seconded from the Economic Innovation and Technology Council, EITC he was appointed in a part-time capacity as an Associate Professor in the ME/MF Department. He continued in this role until 1996 at which time he was appointed Adjunct Professor.

Dr. Tandon was recently diagnosed with cancer and through all of this he continued his research and work which benefited the Department and the University significantly. He played a key role in establishing two areas of research-solidification in microgravity, and wear of materials/coatings. This research resulted in considerable research funding to the university, in publications, and the training of graduate students. He was an integral part of the ME/MF department where he established a unique research program, one of three in Canada, in wear of materials/coatings which was of great interest to Standard Aero Ltd.

Dr. Tandon was valiant in his will to survive, but it proved to be impossible to overcome. He was a devoted researcher and his presence in the ME/MF Department will be greatly missed.

A Memorial Service will be held on Tuesday, July 19, 2005 at 4:00 p.m. at Thomson in the Park Funder Home, 1291 McGillivray Blvd.



Faculty of Engineering



UNIVERSITY OF MANITOBA | Office of the
Vice-President (Academic) & Provost

208 Administration Building
Winnipeg, Manitoba
Canada R3T 2N2
Telephone (204) 480-1408
Fax (204) 275-1160

May 27, 2005

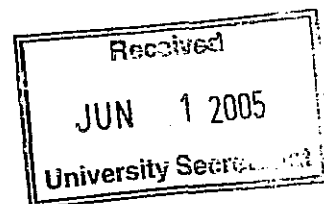
TO: Richard Sigurdson, Dean, Faculty of Arts
FROM: Robert Kerr, Vice-President (Academic) & Provost
SUBJECT: New Programs in Italian Studies

We have now received formal confirmation that COPSE Council, at its meeting of 13 May, approved the establishment of your Faculty's proposed B.A. (Gen) and B.A. (Adv) Majors in Italian Studies. Congratulations to everyone who worked so hard to create these exciting new programs!

Because these programs require no additional resources, I am pleased to authorize their implementation effective September 2005.

RK/sc

c E.J.E. Szathmáry
R.A. Lobdell
N. Marnoch
J. Leclerc



Report of the Senate Committee on Awards respecting Awards - August 3, 2005 (Part A)

Preamble

The Senate Committee on Awards (SCOA) terms of reference include the following responsibility:

"On behalf of Senate, to approve and inform Senate of all new offers and amended offers of awards that meet the published guidelines presented to Senate on November 3, 1999, and as thereafter amended by Senate. Where, in the opinion of the Committee, acceptance is recommended for new offers and amended offers which do not meet the published guidelines or which otherwise appear to be discriminatory under Policy No. 419, such offers shall be submitted to Senate for approval." (Senate, April 5, 2000)

At its meeting on August 3, 2005 SCOA reviewed 13 new awards offers, 27 award amendments, and three award withdrawals and reports as follows.

Observation

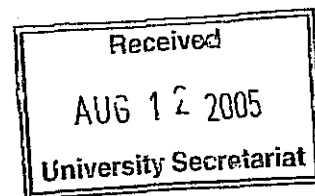
On behalf of Senate, the Senate Committee on Awards approved and recommends that the Board of Governors approve 13 new awards, 27 award amendments and three award withdrawals as set out in Appendix "A" of the Report of the Senate Committee on Awards (dated August 3, 2005 (Part A)). These award decisions comply with the published guidelines of November 3, 1999, and are reported to Senate for information.

Respectfully submitted,

Diana Kaspersion (for)

Professor R. Baydack, Chair
Senate Committee on Awards

Comments of the Senate Committee on Awards
The Senate Executive Committee endorses
the report to Senate.



APPENDIX "A"

OFFERS

WHITMORE FAMILY SCHOLARSHIP

An endowment fund initially valued at \$94,228 has been established at the University of Manitoba in honour of Mina and William Whitmore and family. The fund will be used to support one Whitmore Family Scholarship for a continuing student valued at up to 20 percent of the available annual interest (maximum \$750) and will be first offered in 2007. The remaining annual interest will be used to support the Whitmore Family Entrance Scholarships. The Manitoba Scholarship and Bursary Initiative has made a contribution to this fund.

The scholarship will be offered to a student who:

- (1) has completed their first year of full-time study in University 1 at the University of Manitoba with a minimum of 24 credit hours and received a Whitmore Family Entrance Scholarship;
- (2) has achieved the highest sessional grade point average during the first year of study among all Whitmore Family Entrance Scholarship recipients;
- (3) enrolls full-time in their second year of study in any Faculty or School.

In case of a tie where course load and grade point average are equal, the scholarship will be split between the candidates.

As the capital balance of the fund grows increasing the available annual interest, scholarships for continuing students progressing from second to third year and third to fourth may be added. The remaining annual interest will be used to support the Whitmore Family Entrance Scholarships. The total value of all scholarships offered cannot exceed the annual available income.

Selection for this scholarship will be based in the Financial Aid and Awards Office.

WHITMORE FAMILY ENTRANCE SCHOLARSHIP

An endowment fund initially valued at \$94,228 has been established at the University of Manitoba in honour of Mina and William Whitmore and family. After providing for the Whitmore Family Scholarship, the remaining balance will be used to provide Whitmore Family Entrance Scholarships for students at the University of Manitoba and will first be offered in 2006. The Manitoba Scholarship and Bursary Initiative has made a contribution to this fund.

Each year scholarships (valued at a minimum of \$500 but less than the Tier V level of the University of Manitoba Entrance Scholarship Program) will be offered to students who:

- (1) are graduating from a rural Manitoba high school;

SENATE COMMITTEE ON AWARDS REPORT TO SENATE - AUGUST 3, 2005 (Part A)

- (2) have achieved a minimum average of 83 percent on the best five courses appearing on the approved list of courses for entrance scholarship consideration;
- (3) register by the September immediately following for a full-time course load in University 1 or any faculty or school of the University which admits students directly from high school.

A Whitmore Family Entrance Scholarship may not be held with scholarships offered through the tiered University of Manitoba Entrance Scholarship Program (ESP), the Leader of Tomorrow Scholarship, the Isabel Auld Entrance Scholarship, or the Chancellors' Scholarship.

Selection for this scholarship will be based in the Financial Aid and Awards Office.

BRATHWAITES OLIVIER MEDICAL INC. CLINICAL EXCELLENCE AWARD

Brathwaites Olivier Medical Inc. has offered to provide an annual award in the School of Medical Rehabilitation. Brathwaites Olivier Medical Inc. is a principal supplier of health care products and equipment within the hospital environment. The first award will be offered in 2005.

A convocation award, valued at \$500, will be offered to a student who:

- (1) has completed the third year of study and is graduating from the Respiratory Therapy Program in the University of Manitoba's School of Medical Rehabilitation;
- (2) has achieved a minimum cumulative grade point average of 3.0;
- (3) has demonstrated excellence in clinical work and interpersonal skills as judged through the program's clinical rotation evaluations;
- (4) has demonstrated active involvement in professional and/or community activities.

The selection committee will be the Awards Committee of the Department of Respiratory Therapy.

DR. DONALDA MARGARET HUGGINS SCHOLARSHIP IN ANESTHESIA

The objective behind the establishment of this scholarship is to stimulate and support the search for new knowledge, develop excellence in education through research, and promote scholarly service in the discipline of Anesthesia. Dr. Huggins graduated from the Faculty of Medicine at the University of Manitoba in 1935 and was the first Professor of Anesthesia at the Winnipeg General Hospital. She was responsible for organizing Anesthesia as a formal department at the hospital and she later helped to establish the Anesthesia Chair at the University of Manitoba. Dr. Huggins continued as Professor and Department Head at the University of Manitoba until her retirement in the early 1960's.

SENATE COMMITTEE ON AWARDS REPORT TO SENATE - AUGUST 3, 2005 (Part A)

The scholarship will fund a clinical resident, fellow or physician who is qualified in Anesthesia and wishes to develop skills by enrolling at the University of Manitoba in one of the following three areas:

- (1) An established M.Sc. or Ph.D. Program of Basic Science relevant to the practice of Anesthesia; or
- (2) A M.Sc. or Ph.D. Program in Clinical Epidemiology, Biostatistics, or Population Health relevant to the practice of Anesthesiology; or
- (3) A M.Ed. or Ph.D. Ed. Program relevant to Medical Education, specifically as it affects teaching in Anesthesiology.

The scholarship, valued at \$50,000, will be offered to the candidate who:

- (1) is enrolled full-time in the Faculty of Graduate Studies (Masters or Ph.D. program) or in the Postgraduate Medical Education Program at the University of Manitoba, in one of the three areas outlined above;
- (2) has completed Doctor of Medicine training in the previous academic session or has been in practice as a clinical anesthetist for a period of less than two years in the Winnipeg Regional Health Authority;
- (3) has demonstrated excellence in the discipline and wishes to continue in it.

The total value of the scholarship is \$50,000 tenable for a two-year period.

Recipients of this scholarship will be required to make a commitment to return to the Department of Anesthesia subsequent to their enhanced training. If a position is not available, the recipient will be released from their commitment.

Interested individuals will be required to submit an application to the Associate Dean of Research, Faculty of Medicine, University of Manitoba by January 1st of the year in which the scholarship will be tenable. Applicants are required to submit a curriculum vitae; three professional letters of reference; a project description (maximum length of two pages); a letter from the identified mentor outlining the resources available to the trainee and how the mentor will facilitate the research; and a letter of support from the department head outlining the departmental resources and facilities available to the trainee.

The selection committee will consist of the clinical Department Head of Anesthesia, three additional clinician scientists selected from other clinical departments and the Dean of the Faculty of Medicine (or designate).

**DR. MARK NICKERSON GRADUATE ENTRANCE STUDENTSHIP
IN PHARMACOLOGY AND THERAPEUTICS**

Dr. Mark Nickerson, a world-renowned pharmacologist, joined the University of Manitoba in 1954 and was appointed the first Professor and Head of the Department of Pharmacology and Therapeutics. He developed a modern course in Pharmacology and Therapeutics, and established it as an important discipline in the undergraduate medical curriculum. Dr. Nickerson recruited several world-class pharmacologists over a short period of time to establish the Department as a leader both nationally and internationally in the field of Pharmacology and Therapeutics. He was the primary driving force in the design and construction of a new building for Pharmacology, The Chown Building, which opened in 1965, and remains the home of the Department. This studentship has been established as a lasting tribute to his energy and vision in developing the discipline of Pharmacology and Therapeutics in Canada.

The endowment fund of initially \$139,335 has been established by the Department of Pharmacology and Therapeutics. The available annual interest from this fund will be used to provide an entrance studentship to a student who:

- (1) is enrolled in the Post Graduate Medical Education Program, specifically in the Department of Pharmacology and Therapeutics, in the Faculty of Medicine at the University of Manitoba;
- (2) is the most academically deserving student entering the graduate studies program in a given calendar year.

If in a given calendar year, upon the recommendation of the selection committee, there is no acceptable recipient the studentship will not be awarded. The value of this award will be adjusted on a regular basis to reflect the income generated from the endowment.

The selection committee will be the Graduate Studies Committee of the Department of Pharmacology and Therapeutics.

Any future amendments to the terms of reference will require approval by 75 percent of the membership of the Pharmacology and Therapeutics Department Council. The Department Head of Pharmacology and Therapeutics will administer the activity of the studentship based on recommendations made by the Graduate Studies Committee of the Department of Pharmacology and Therapeutics.

Should the Department of Pharmacology and Therapeutics be dissolved or amalgamated with another department or faculty, the studentship must continue to be given as an entrance award for candidates pursuing post graduate qualifications in the scientific discipline of Pharmacology.

JAMES T. RALEIGH MEMORIAL BURSARY

Mrs. Doris Raleigh has established an endowment fund of \$37,638.54 to provide bursary support for students at the University of Manitoba to honour her husband James, who was a 1952 Civil Engineering graduate of the University of Manitoba. The first award, valued at the available annual interest, will be offered in 2006 to a student who:

- (1) is enrolled as a full-time or part-time student in the third or fourth year of study in any Faculty or School at the University of Manitoba;
- (2) has achieved a minimum cumulative grade point average of 2.0;
- (3) demonstrates financial need on the standard University of Manitoba bursary application form.

Preference will be given to a custodial single parent with dependent children.

Selection for this bursary will be based in the Financial Aid and Awards office.

DR. A.A. EARN MEMORIAL AWARD

An endowment fund of \$12,300 was established in honour of Dr. A.A. Earn by his wife Josephine, daughter Dinah, and son David. Dr. Earn was a distinguished member of the Department of Obstetrics, Gynecology and Reproductive Sciences from 1959-1995. The award, to be used for the purchase of texts, is valued at \$500 and will be awarded annually to a student who:

- (1) is enrolled in the Post Graduate Medical Education program in Obstetrics and Gynecology in the Faculty of Medicine at the University of Manitoba;
- (2) shows exceptional promise in Obstetrics and Gynecology.

The selection committee will be named by the Head of the Department of Obstetrics, Gynecology and Reproductive Sciences and will include the Director of the Post Graduate Medical Education program.

JAMES C.H. ANDERSON BURSARY

In memory of James C.H. Anderson (B.A./52), the Actuarial Foundation of Canada has made a contribution of \$100,000 to provide bursary support to actuarial students in the I.H. Asper School of Business and Faculty of Science. A matching contribution by the Manitoba Scholarship and Bursary Initiative has established an endowment fund of \$200,000 at the University of Manitoba.

Born in Winnipeg, Manitoba, James C.H. Anderson began his actuarial career by working for two insurance companies in his hometown while attending the University of Manitoba. Upon

SENATE COMMITTEE ON AWARDS REPORT TO SENATE - AUGUST 3, 2005 (Part A)

graduation he moved to the United States where he assumed subsequent positions of increasing responsibility throughout his 40 years of service in the insurance industry.

Three bursaries, each valued at one-third of the available annual interest, will be offered annually to undergraduate students who:

- (1) are enrolled full-time (minimum 24 credit hours) in their second year of a four-year undergraduate program at the University of Manitoba, leading to either, (a) a Bachelor of Commerce (Honours) with a declared major in Actuarial Mathematics through the I.H. Asper School of Business, or (b) a Bachelor of Science (Honours) in Actuarial Mathematics (single or joint Honours program), through the Faculty of Science;
- (2) have achieved a minimum cumulative grade point average of 3.0; and
- (3) have demonstrated financial need on the standard University of Manitoba bursary application form.

The selection committee will be named by the Head of the Warren Centre for Actuarial Studies & Research.

DIANA LORANGER MEMORIAL SCHOLARSHIP

From a bequest left by Dr. Diana Loranger, an endowment fund of \$43,125 has been established to provide scholarships in the Department of Geological Sciences. The scholarship, valued at the available annual interest, will be offered to a student who:

- (1) has completed the second or third year of study as a full-time student (minimum 24 credit hours) in the Department of Geological Sciences, Clayton H. Riddell Faculty of Environment, Earth, and Resources at the University of Manitoba;
- (2) has achieved high standing with a minimum sessional grade point average of 3.5;
- (3) enrolls in the next ensuing year of study as a full-time student (minimum 24 credit hours).

The annual interest may be divided to provide more than one scholarship each year at the discretion of the selection committee.

The selection committee will be the Department of Geological Sciences awards committee.

VERA HEIMBACH BURSARY

In honour of Vera Heimbach, the Winnipeg Game and Fish Association, with a contribution from the Manitoba Scholarship and Bursary Initiative, has established an endowment fund of \$10,000 to provide bursary support for students. The Winnipeg Game and Fish Association have chosen to honour Vera, a long-time secretary of the Association, with a bursary in her name for her dedicated service and the lifetime commitment and passion she has shown

SENATE COMMITTEE ON AWARDS REPORT TO SENATE - AUGUST 3, 2005 (Part A)

towards wildlife protection and preservation. Beginning in 2006, the bursary will be offered to a student who:

- (1) is enrolled as a full-time undergraduate student in the Clayton H. Riddell Faculty of Environment, Earth, and Resources at the University of Manitoba;
- (2) has achieved a minimum cumulative grade point average of 2.5;
- (3) has demonstrated financial need on the standard University of Manitoba bursary application form.

The selection committee will be named by the Dean of the Clayton H. Riddell Faculty of Environment, Earth, and Resources (or designate).

GARY AND JANICE FILMON BURSARY IN ENGINEERING

A contribution provided by the PC Manitoba Fund has established an endowment fund at the University of Manitoba in honour of Gary and Janice Filmon. The fund, currently valued at \$49,170, will provide two bursaries annually. Each bursary will be valued at half of the available annual interest with one offered to a student in the Faculty of Engineering and one to a student in the Faculty of Human Ecology. Beginning with the 2005-2006 academic session, a bursary in Engineering will be offered to a student who:

- (1) is enrolled full-time in any year of study in the Faculty of Engineering at the University of Manitoba;
- (2) has achieved a minimum cumulative grade point average of 2.5;
- (3) has demonstrated financial need on the University of Manitoba bursary application form.

The selection committee will be the Faculty of Engineering Scholarships, Bursaries, and Awards Committee.

GARY AND JANICE FILMON BURSARY IN HUMAN ECOLOGY

A contribution provided by the PC Manitoba Fund has established an endowment fund at the University of Manitoba in honour of Gary and Janice Filmon. The fund, currently valued at \$49,170, will provide two bursaries annually. Each bursary will be valued at half of the available annual interest with one offered to a student in the Faculty of Engineering and one to a student in the Faculty of Human Ecology. Beginning with the 2005-2006 academic session, a bursary in Human Ecology will be offered to a student who:

- (1) is enrolled full-time in any year of study in the Faculty of Human Ecology at the University of Manitoba;

SENATE COMMITTEE ON AWARDS REPORT TO SENATE - AUGUST 3, 2005 (Part A)

- (2) has achieved a minimum cumulative grade point average of 2.5;
- (3) has demonstrated financial need on the University of Manitoba bursary application form;
- (4) has demonstrated a service ethic with involvement in the university or external community (e.g., community services, volunteering, music, drama, art, athletics, student government).

Applicants must include a one-page description of activities as outlined in the fourth criterion along with their bursary application.

The selection committee will be the Faculty of Human Ecology Student Standing and Awards Committee.

ANDREW YOUNG SCHOLARSHIP

An endowment fund of \$80,000 has been established in the name of Andrew Young by Andrew's parents, Jon Young and Nancy Read, and by the Estate of Andrew's maternal grandparents, Wallace and Grace Read, to provide scholarships to students studying English at the University of Manitoba. The Manitoba Scholarship and Bursary Initiative has made a contribution to this fund. The scholarship, valued at half of the available annual interest, will first be offered in 2005.

Andrew James Read Young was a third-year student in the Faculty of Arts at the time of his death in 2004. Throughout his life, Andrew had a passion for literature, poetry and creative writing. At the University of Manitoba, he found a place where faculty and fellow students allowed that interest to flourish. This scholarship is being established to honour Andrew's passion and to recognize the friendship and support that the University provides.

The scholarship will be offered each year to a student who:

- (1) is enrolled full time in the third year of study in the Faculty of Arts at the University of Manitoba and has completed 24 to 30 credit hours in Arts courses beyond the 100 level and who is pursuing either an honours or an advanced major degree in English;
- (2) has achieved a minimum cumulative grade point average of 3.5;
- (3) has demonstrated passionate intellectual engagement with literature in general, and poetry, Shakespeare or creative writing, in particular.

The Faculty members of the Department of English will nominate candidates for consideration for the scholarship.

There will be one new recipient selected annually. Each recipient will hold the scholarship for a period of two years. The scholarship will be renewed, providing the student:

SENATE COMMITTEE ON AWARDS REPORT TO SENATE - AUGUST 3, 2005 (Part A)

- (1) registers for, and remains registered in, the fourth year of their program as a full-time student in the Department of English in the Faculty of Arts;
- (2) maintains a cumulative grade point average of at least 3.5.

In exceptional years when a new recipient cannot be selected based on the criteria outlined above, a fourth year or pre-M.A. student may be considered. Such a recipient will only hold the award once (i.e., they will not receive the renewal portion of the scholarship).

The selection committee will be named by the Head of the Department of English (or designate).

AMENDMENTS

FACULTY OF ENVIRONMENT AWARDS

The terms of reference for scholarships, bursaries and prizes offered in the Faculty of Environment will be amended to reflect its new name as the *Clayton H. Riddell Faculty of Environment, Earth, and Resources*.

CENTRE ON AGING GRADUATE FELLOWSHIP

At the request of the Centre on Aging, the name of this fellowship will be amended to the *BETTY HAVENS CENTRE ON AGING GRADUATE FELLOWSHIP*.

A. LANGLEY JONES LEADERSHIP AWARD

The value of this award offered in the Faculty of Pharmacy will be increased to \$500 (from \$200).

CYRIL L. ANDERSON - RIDLEY CANADA LIMITED AWARD IN ANIMAL SCIENCE - DEGREE

The name of this award will be amended to *CYRIL L. ANDERSON - RIDLEY INC. AWARD IN ANIMAL SCIENCE - DEGREE*.

CYRIL L. ANDERSON — RIDLEY CANADA LIMITED PRIZE - DIPLOMA AGRICULTURE

The name of this award will be amended to *CYRIL L. ANDERSON - RIDLEY INC. PRIZE - DIPLOMA AGRICULTURE*.

**CYRIL L. ANDERSON — RIDLEY CANADA LIMITED GRADUATE
FELLOWSHIP IN ANIMAL NUTRITION**

The name of this award will be amended to *CYRIL L. ANDERSON - RIDLEY INC. GRADUATE FELLOWSHIP IN ANIMAL NUTRITION*.

**CANADA LAW BOOK INC. PRIZE FOR CIVIL PROCEDURE
CANADA LAW BOOK INC. PRIZE FOR FAMILY LAW**

At the direction of the donor, the value of these prizes will be increased to \$250 each (previously \$150 each in Civil Procedure and \$75 each in Family Law).

ST. JOHN'S MUSIC LTD. SCHOLARSHIP

The name of this scholarship will be amended to *ST. JOHN'S MUSIC SCHOLARSHIP*.

ROMA COLLINS MEMORIAL SCHOLARSHIP

The Bachelor of Human Ecology (Clothing and Textiles) degree offered in the Faculty of Human Ecology has been changed to a Bachelor of Science (Textile Sciences) degree. This scholarship is open to all students in the Faculty of Human Ecology therefore, the terms of reference will be amended to add this degree to be considered eligible.

UNIVERSITY OF MANITOBA FACULTY ASSOCIATION BURSARIES

The terms of reference for this bursary will undergo several amendments. First, the value of the three bursaries will be increased to \$1,500 each (from \$1,000). Second, students in the final year of their first undergraduate degree will now be eligible. Previously, recipients were required to be returning for the next year of study. Third, a minimum sessional grade point average of 2.0 will be added as a criterion. Last, the inclusion of two Deans or Directors (or representatives) and the President of UMFA (or representative) will be replaced with a requirement that, after determining potential candidates, the Financial Aid and Awards Office will consult with the Faculty Association to ensure that the criteria have been met.

MANITOBA MILK PRODUCERS BURSARY

The name of this bursary offered in Agricultural and Food Sciences will be amended to the *DAIRY FARMERS OF MANITOBA BURSARY*.

PHILOSOPHIA MATHEMATICA PRIZE IN APPLIED MATHEMATICS

The value of this prize will be amended to the available annual interest generated by the endowment fund, approximately \$200, (from \$100 and a one-year subscription to Philosophia Mathematica). In addition, the department named in the terms of reference will be amended to the Department of Mathematics (from the Department of Applied Mathematics). Lastly, the award is offered to a student studying Applied Mathematics. The 'a' and 'm' of applied mathematics will be changed to lower case.

**ARCHER DANIELS MIDLAND FELLOWSHIP
MORRIS SHORE GRADUATE SCHOLARSHIP**

The terms of reference for these awards will undergo two amendments. First, reference to the MBA Manitoba Program will be amended to the new name, Asper MBA Program. Second, the selection committee will be simplified to, "The selection committee will be the MBA Program Committee."

ALLAN BRONFMAN FAMILY BURSARY AT THE I.H. ASPER SCHOOL OF BUSINESS

The terms of reference for this bursary will undergo three minor amendments. First, reference to the Master of Business Administration will be amended to the new name, Asper MBA Program. Second, the selection committee will be simplified to, "The selection committee will be the MBA Program Committee." Last, the financial resources and circumstances of the applicants are considered in selection. This will be clarified in the terms of reference to mean that financial need has been demonstrated on the University of Manitoba bursary application form".

T.A. (STONEY) ANDERSON GOLD MEDAL

The terms of reference for these awards will undergo two amendments. First, reference to the MBA Manitoba Program will be amended to the new name, Asper MBA Program. Second, it will be clarified that the medal is offered each May to the student who has achieved the highest academic standing in the program *among all graduates in the last twelve months*.

WILLIAM EDWARD DRISCOLL BURSARY

The terms of reference for this bursary offered in the Faculty of Law will be amended to reflect that an endowment fund has now been established at the University of Manitoba in support of this bursary with funds contributed by the family of William Edward Driscoll. In the past the funds were held with the Manitoba Law School Foundation and the bursary was annually funded by the Foundation.

GARTH ERICKSON MEMORIAL BURSARY

The terms of reference for this bursary offered in the Faculty of Law will be amended to reflect that an endowment fund has now been established at the University of Manitoba in support of this bursary with funds contributed by the family and friends of Garth Erickson. In the past the funds were held with the Manitoba Law School Foundation and the bursary was annually funded by the Foundation.

**MANITOBA LAW SCHOOL FOUNDATION - GARTH ERICKSON MEMORIAL
PRIZE IN COMMERCIAL LAW
MANITOBA LAW SCHOOL FOUNDATION - GARTH ERICKSON MEMORIAL
PRIZE IN SALES AND CONSUMER LAW**

The terms of reference for these prizes offered in the Faculty of Law will be amended to reflect that an endowment fund has now been established at the University of Manitoba in their support with funds contributed by the family and friends of Garth Erickson. In the past the funds were held with the Manitoba Law School Foundation and the prizes were annually funded by the Foundation. As well, reference to the Manitoba Law School Foundation will be removed from the names of the prizes.

**MANITOBA LAW SCHOOL FOUNDATION PRIZE IN WILLS AND SUCCESSION
MANITOBA LAW SCHOOL FOUNDATION PRIZE IN
CANADIAN CHARTER OF RIGHTS AND FREEDOMS**

The terms of reference for these prizes offered in the Faculty of Law will be amended to reflect that an endowment fund has now been established at the University of Manitoba in their support with funds contributed by the family and friends of Frank Billinkoff. In the past the funds were held with the Manitoba Law School Foundation and the prizes were annually funded by the Foundation. As well, the names of the prizes will be amended to the *FRANK BILLINKOFF PRIZE IN WILLS AND SUCCESSION* and the *FRANK BILLINKOFF PRIZE IN CANADIAN CHARTER OF RIGHTS AND FREEDOMS*.

JOHN A. MACDIARMID SCHOLARSHIP

The value of this scholarship offered in the Faculty of Physical Education and Recreation Studies will be amended to the available annual interest (from \$500).

**LORD SELKIRK ASSOCIATION OF RUPERTSLAND AGRICULTURE SCHOLARSHIP
LORD SELKIRK ASSOCIATION OF RUPERTSLAND MEMORIAL SCHOLARSHIPS**

At the request of the donor, the names of these scholarships will be amended to *THE LORD SELKIRK ASSOCIATION OF RUPERT'S LAND AGRICULTURE SCHOLARSHIP* and *THE LORD SELKIRK ASSOCIATION OF RUPERT'S LAND MEMORIAL SCHOLARSHIPS*.

MR. AND MRS. ONG HOO HONG MEMORIAL BURSARY

The terms of reference for this bursary will undergo several amendments. First, in the first paragraph, it will be clarified that Mr. and Mrs. Ong and their nine children all attended the University of Manitoba. Second, students enrolled in Continuing Education will no longer be considered eligible. Third, both entering and returning students are eligible for this bursary. Entering students will require a minimum high school average of 70% to be eligible. Fourth, the bursary is directed to students who have demonstrated unique personal hardship or difficult personal circumstances as a student with a *permanent* disability or as a *single parent*. The terms of the bursary will be further clarified that multiple bursaries may be offered in a given year and bursaries will be made available for both the regular and summer sessions. Further, a

SENATE COMMITTEE ON AWARDS REPORT TO SENATE - AUGUST 3, 2005 (Part A)

recipient can hold this bursary multiple times throughout their academic career at the University of Manitoba. The selection committee will have the discretion to determine the number and value of awards each year. Finally, the Department of Religion will assist with the selection process.

WITHDRAWALS

PIERRE FAUCHARD ACADEMY AWARD

This scholarship is to be withdrawn as it is now managed through an external program.

GERMAIN MASSICOTTE MEMORIAL AWARD

This award offered in the MBA program at the Asper School of Business is to be withdrawn as the original five-year commitment has been met and, upon review, the donor has decided against continuing with the award.

FACULTY OF ENGINEERING MEDAL IN GEOLOGICAL ENGINEERING

This program medal is to be withdrawn as the Geological Engineering program is no longer offered.

August 24, 2005

Report of the Senate Executive Committee

Preamble

The Executive Committee of Senate held its regular monthly meeting on the above date.

Observations

1. Speaker for the Executive Committee of Senate

Dean Leslie King will be the Speaker for the Executive Committee for the September meeting of Senate.

2. Comments of the Executive Committee of Senate

Other comments of the Executive Committee accompany the report on which they are made.

Respectfully submitted,

Dr. Emőke Szathmáry, Chair
Senate Executive Committee
Terms of Reference: *Senate Handbook* (Revised 1992), Section 9.

/nis

Comments of the Senate Executive Committee:

The Senate Executive Committee endorses
the report to Senate.



MEMORANDUM

March 7, 2005

To: Mr. Jeff LeClerc, University Senate Office 310 Administration

From: Dr. Donald Smyth, Acting Dean, Faculty of Graduate Studies *D. Smyth*

Subject: MOTIONS FROM THE FACULTY COUNCIL OF GRADUATE
STUDIES:

The following motions were passed at the Faculty Council of Graduate Studies meeting, February 28, 2005.

For Approval:

MOTION: that the proposed course deletions be approved by Senate.

MOTION: that the proposed course changes be approved by Senate.

MOTION: that the proposed modifications to the Ph.D. in Social Work be approved by Senate.

MOTION: that the proposed Ph.D. in Design and in Planning in the Faculty of Architecture be approved by Senate.

/ks

atts.

Comments of the Senate Executive Committee:
The Senate Executive Committee endorses
the report to Senate.

Preamble

The Programs and Planning Committee (PPC) of the Faculty of Graduate Studies (FGS) has the responsibility of considering new graduate program proposals and to make recommendations to FGS Council. PPC met on January 24, 2005 and made the following recommendation regarding the proposal of a Ph.D. program in Design and Planning.

Observations

1. The proposed interdisciplinary Ph.D. in Design and Planning would be unique in Canada, serving a societal demand for broader interdisciplinary solutions to complex environmental, design and planning problems.
2. The external review committee endorsed the proposed program, concluding that the Faculty of Architecture has the capacity and potential to deliver a solid doctoral program.
3. The Library Support Statement indicated that the University of Manitoba Libraries is able to support the proposed Ph.D., noting that resources are strong in all areas related to the curriculum.
4. The proposal received support statements from The Faculties of Engineering, Education and, Environment Earth and Resources, and from Student Records and IST.
5. The written proposal (including new course introduction forms and the Library Support Statement), external reviewer reports and the Faculty of Architecture response to the external reviewer reports are attached.

Recommendation

The Programs and Planning Committee of the Faculty of Graduate Studies recommends that the Faculty Council of Graduate Studies endorse the Ph.D. proposal in Planning and Design to Senate for approval.

Endorsed by the Faculty Council of Graduate Studies February 28, 2005

Faculty of Architecture

Proposal for Ph.D.

(In Design, and In Planning)

January, 2005

1. Introduction

This proposal to establish a Ph.D. in the Faculty of Architecture is intended to address a current shortfall in the Faculty's academic program. University of Manitoba, Faculty of Graduate Studies general regulations have been applied to the development of this program.

1.1 Background

Over the past 90 years, the Faculty of Architecture has evolved from being the first School of Architecture in Western Canada to a fully integrated interdisciplinary Faculty with four Departments. Presently the Faculty offers Masters degrees in Architecture, City Planning, Interior Design and Landscape Architecture, and an Undergraduate Degree in Environmental Design.

Few other universities in North America offer the breadth of Design and Planning disciplines provided at the University of Manitoba. Typically other universities offer planning or design studies in one or two of the four design disciplines available at the University of Manitoba. Few Canadian universities provide Ph.D.'s in planning or design-based discipline programs.

The need for Ph.D. degrees housed in broadly based interdisciplinary faculties, however, is growing, particularly as society demands broader interdisciplinary solutions to complex environmental, design and planning problems. While Graduate Studies offers an Interdisciplinary Ph.D. (permitting Ph.D. candidates in the Faculty of Architecture to register in other University Faculties that offer Ph.D.'s) this process is not effective for most Ph.D. candidates and does not serve well the Faculty's emerging research agenda. Increasingly, there is evidence that other professional programs are further evolving to include research degrees, such as doctorates in the design disciplines.

The University of Manitoba is uniquely positioned to provide a Ph.D. More particularly, the Faculty of Architecture is able to deliver a Ph.D. with two streams or foci: one in Design and one in Planning. Both streams would be founded upon a broad based and highly regarded interdisciplinary program located in the Faculty of Architecture. The provision of a Ph.D. (an interdisciplinary focus on either Design or Planning) would be the natural evolution of the Faculty that has a national and international reputation for its teaching and research¹, and would address the increasing need for a Ph.D. in an interdisciplinary Design and Planning Faculty.

A. Program Description

The Faculty of Graduate Studies Procedure for Submitting a New Program Proposal has been used to guide the presentation of the following material.

1. *Rationale, objectives and features*

1. Rationale

The Faculty of Architecture has established a strong teaching and research agenda. The latter development requires that the Faculty continue to evolve by providing advanced study and research opportunities for the design professions while supporting the faculty's research interests. A Ph.D., with

¹ For instance, the May 2004 Canadian Architectural Certification Board Visiting Team, applying North American accreditation criteria commented that, "recent initiatives such as CAST place the Architecture programme at the forefront of architectural research in North America" (5)

two streams (one in Design and one in Planning), addresses that need by developing an advanced research and study environment. Such a Ph.D. is appropriate for a major research university and a Faculty that continues to invest in its research agenda, such as the Centre for Architectural Structures and Technology (CAST). In recognition of the Faculty of Architecture's mix of design and planning accredited programs and emerging emphasis upon design and planning research, there is a need for two streams within the Faculty of Architecture. The two streams address the breadth and interdisciplinary nature of the Faculty, and the emerging international discourse around the need for advancements in design education. A stream in Design will build on the strengths of the architecture, interior design and landscape architecture faculty and associated emerging research agenda in building structures (e.g., CAST), design theory and sustainable design. The other stream will focus upon the broader planning research agenda that is emerging in the Faculty, such as Community-based planning and design, sustainable development at the regional and urban scale, and aboriginal planning. The Faculty believes that, while complementary, the two streams address specific research interests of the two broader discipline scales, offer an increased opportunity to attract high quality scholars, and specialise in areas of design and planning that are provided at only a few other North American universities.

Quite simply, the primary rationale for this proposal is to bring the Faculty in line with other Faculties in our research university, and to address the increasing research and study needs of the Design and Planning disciplines.

The proposed new Ph.D. (in Design, and Planning) reflects the University's newly approved Strategic Plan, *Building for a Bright Future*. In particular, the new proposed Ph.D. responds to the five institutional priorities:

1. *Provide Access to an Exceptional Education* by promoting interdisciplinary Ph.D. studies through the development of curricula that responds to the emerging challenges of the built and natural environments.
2. *Attract and Retain the Best* by providing a research environment for faculty that includes Ph.D. student support and potential high quality Ph.D. candidate studio instructors for the undergraduate degree program.
3. *Be a Centre for Research and Graduate Education that Makes a Difference to our Province, our Nation and our World* by strengthening our research culture through the research work of Ph.D. students (and, potentially post-doctoral researchers).
4. *Be at the Centre of our Community: On Manitoba* by supporting Ph.D. research work in regional imperatives related to design and planning.

II. Objectives

- support advanced research and study in the Design and Planning disciplines;
- promote advanced research of the built and natural environments;
- complement the interdisciplinary structure of the Faculty; and
- support the Faculty in its quest to be an internationally acclaimed Design and Planning institution.

III. Highlights

Highlights of the proposed Ph.D. include:

- The new program will be a Ph.D. with two streams: one with a Design focus and one with a Planning focus. Given the interdisciplinary structure of the Faculty of Architecture, the new Ph.D. program will serve the needs of the four design disciplines (architecture, city planning, interior design and landscape architecture) by focusing upon Design and Planning theory and research.

- The proposed Ph.D. (in Design, and in Planning) will complement the emerging research focus of the Faculty. The Faculty of Architecture has developed a Strategic Research Plan that will place it at the forefront of Design and Planning research in Canada. A Ph.D. is required in order for the Faculty to fulfill its research mission and the mandate of the University of Manitoba.
- The Ph.D. with a focus on Design will be unique in Canada, in part because it will operate in conjunction with the four existing design disciplines within the Faculty (a Faculty structure not common in North America). The Ph.D. with a focus on Planning will serve a special niche through its interdisciplinary links to design and focus upon planning scale matters.
- Admission requirements and program requirements aim for high quality design theory and research, advancement of Design and Planning knowledge, and professional development.
- Curriculum content focuses on understanding the interdisciplinary relationship between the built and natural environment and associated human factors.
- Teaching and learning methods in academic modules will include a mixture of seminars, lectures, studios, case study tutorials and independent study. Activities that promote interdisciplinary Design and Planning and other Faculty collaboration will be part of the new program.
- The Ph.D. students will be encouraged to teach in the undergraduate studio program.
- The Faculty will not seek accreditation for the Ph.D. Given that the four existing Masters degrees are accredited by their respective professional bodies and given the specific nature and requirements of accreditation, it is proposed that this Ph.D. program not be accredited.

2. Context

1. Needs assessment

A Needs Assessment was completed by reviewing Ph.D. Design and Planning offerings in Canada (Table 1) and beyond. There is no equivalent broad-based English language Design and Planning Faculty in the country (although the Université de Montréal offers a similar structure). Other Planning or Design Faculties/Schools usually consist of one or two planning or design disciplines only, not the four that exist at the University of Manitoba².

In Western Canada, only the University of Calgary offers a Ph.D. in Environmental Design within the auspices of an interdisciplinary Faculty (Architecture, Environmental Design, Environmental Science, Industrial Design, Urban Design). UBC offers a Ph.D. in the School of Community and Regional Planning. In the remainder of the country only the University of Waterloo offers a Ph.D. in a broad-based Design and Planning Faculty (in this case: Architecture, Environment and Resource Studies, and Planning). McGill University offers a Ph.D. in Architecture and a Ph.D. in Planning. York provides an Environmental Studies doctorate degree with planning as one of several foci. Overall, no other university in Canada offers a Ph.D. in such a broadly based Design and Planning Faculty as exists at the University of Manitoba.

A review of Ph.D. in Design and Planning offerings beyond Canada indicates that there are few Ph.D. in Design programs and many Ph.D. in Planning programs. In the case of the former, eleven universities in the United States offer a Design-based Ph.D. (Arizona State, Carnegie Mellon, Georgia Tech, Harvard, Illinois Institute of Technology, MIT, North Carolina State University, University of California, Berkeley, University of Colorado at Denver, and University of Florida). The first Ph.D. in Design was

² Other Universities are exploring the potential to develop more integrated programs (e.g., UBC), but are generally having difficulty breaking down discipline barriers to achieve interdisciplinary structures.

Table 1
Comparison of Ph.D. Offerings
in Design in Canada

University & Location	Type/Location				
	Architecture	Planning	Interior Design	Landscape Architecture	Environmental Design/Studies
UBC					
Dept	no	no	no	no	no
School	no	yes	no	no	no
Faculty	no	no	no	no	no
U Calgary					
Dept	no	no	no	no	no
School	no	no	no	no	no
Faculty	yes	yes	no	no	yes
U Waterloo					
Dept	no	no	no	no	no
School	yes	yes	no	no	yes
Faculty	no	no	no	no	no
U Toronto					
Dept	no	no	no	no	no
School	no	no	no	no	no
Faculty	no	no	no	no	no
Carleton					
Dept	no	no	no	no	no
School	no	no	no	no	no
Faculty	no	no	no	no	no
McGill					
Dept	no	no	no	no	no
School	yes	yes	no	no	no
Faculty	no	no	no	no	no
U Montreal					
Dept	no	no	no	no	no
School	no	no	no	no	no
Faculty	no	no	no	no	no
Laval					
Dept	no	no	no	no	no
School	no	no	no	no	no
Faculty	no	no	no	no	no
Dalhousie					
Dept	no	no	no	no	no
School	no	no	no	no	no
Faculty	no	no	no	no	no
York					
Dept	no	no	no	no	no
School	no	no	no	no	no
Faculty	no	no	no	no	yes

formed at Illinois Institute of Technology in 1993. Six Ph.D. in Design programs exist in the United Kingdom, two in Australia, one in Germany, one in Italy, one in Finland, one in Japan and one in Taiwan. Doctorate studies in design are only now emerging around the world. The need for a similar program in Canada is apparent from increasing global initiatives in post graduate design education. With the development of the Centre for Music, Art and Design (CMAD), a Ph.D. (in Design) will have even more applicability. The proposed Ph.D. (in Design) could serve as a template for a Ph.D. that specialises in the multi-media and interdisciplinary design areas that are planned for CMAD between architecture, fine arts and music.

During the past five years there have been three international conferences addressing the need for doctoral design education. As noted in, Proposal for a School of Design at the University of California, Irvine, "the proceedings (of the second conference in La Clusaz, France in 2000) ... make it clear that research-based, doctoral-level education in design has become a priority for universities around the world" (54:2002). Design literature has been exploring the issues of design education and need for advanced research in design for the past few years (see: Boyer and Mitang [1996], Fisher [2000] and Nichol and Pitting [2000]).

While Ph.D.'s in Planning are common around the world, there are only three universities in Canada (McGill, UBC, Waterloo) offering a doctorate in planning. There are no Canadian universities offering a doctorate in Design. McGill offers a doctorate in Architecture (History). The University of Calgary offers a doctorate in Environmental Design and York University offers a doctorate in Environmental Studies.

The Needs Assessment indicates that there are no comparably structured Design and Planning Faculties in English Canada. Those Faculties/Schools that are planning-based or design-based and offer a Ph.D. have a limited number of programs, usually limited to one or two disciplines. Given the increased emphasis upon integrated interdisciplinary Design and Planning research and practice, a two-stream Ph.D. (in Design, and in Planning) at the University of Manitoba would be unique in Canada. It will be one of the few multidiscipline Faculties in North America offering a Ph.D. with two foci: one in Design and one in Planning.

II Program Strengths

The following program strengths are noted:

- a) The proposed Ph.D. will be offered within an interdisciplinary environment, drawing upon the resources of the four design professions: architecture, city planning, interior design and landscape architecture. The interdisciplinary focus of the Ph.D. will be a signature aspect of the program, unique to the University of Manitoba within the context of Design and Planning in Canada.
- b) The proposed Ph.D. will focus upon the advancement of interdisciplinary Design and Planning theory and research which is critical to the evolution of architecture's, city planning's, interior design's and landscape architecture's knowledge base.
- c) The proposed Ph.D. will build upon faculty investment and strengths, and explore regional imperatives.
- d) The proposed Ph.D. will have opportunities to make use of the Centre for Music Art and Design (CMAD), Centre for Architectural Structures and Technologies (CAST), and other emerging research centres in the Faculty. (Note: the Faculty is unique in Canada in terms of the availability of the proposed CMAD and existing CAST research facilities).

- e) The proposed Ph.D. will be able to link with other professional Faculties, such as Engineering, Environment and Medicine, to explore the implications of advanced Design and Planning on the built environment.

III Areas of concentration

The proposed Ph.D. will offer two streams or foci: one in Design and the other in Planning. Those two areas of concentration address the unique structure of the Faculty and associated faculty mix and specialities.

The Design stream will examine issues of the built and natural environment at a scale that reflects the design realm, a scale that addresses issues of detailed building technology to urban design. The Planning stream will examine issues of the built and natural environment at a scale that reflects the issues of urban design to a regional scale. Each of the four disciplines in the Faculty may work at the design or planning scale. Individual faculty members (and researchers, practitioners and educators), however, tend to focus upon one scale or the other. Therefore, it will be important to provide a Ph.D. with two streams: one in Design and one in Planning.

The proposed Ph.D. will be known for its advanced study in theory and research. It should also be able to respond to emerging issues, and as such, will be designed to be flexible and responsive. Issues of current interest and investments (and faculty strengths) include, for example: *building structures, design and planning education, design and planning practice, design and planning theory, and sustainable design and planning.*

IV Co-operation among Manitoba universities

The proposed Ph.D. will fill a void in the study of Design and Planning in Manitoba and Canada. The proposed Ph.D. will complement the Institute of Urban Studies (IUS) at the University of Winnipeg. IUS offers an undergraduate urban research focus for students and faculty at the University of Winnipeg, but does not provide for post-graduate research opportunities. The Ph.D. (in Planning) will draw on selected IUS faculty, such as Dr. Tom Carter who teaches currently in the Department of City Planning as an adjunct professor.

V Enhancement of University of Manitoba Reputation

The four professional programs offered by the Faculty have received very favourable accreditation in recent years. The four programs are rated very highly by their respective professional bodies and by practitioners across the country. The Ph.D. will build on that legacy and ensure that, through its unique offering within an interdisciplinary environment, the Faculty and, inter alia, the University are seen as leaders in Design and Planning theory and research. Given the increasing awareness of the importance of the Design and Planning professions in the creation of safe, healthy and sustainable communities, the need for advanced Design and Planning research and theory will be crucial to national and international ecological and human settlement action. A Ph.D. offering two streams (one in Design and one in Planning), obtained in an interdisciplinary environment, will place the University of Manitoba at the forefront of emerging Design and Planning research and theory in Canada and internationally.

3. Specifics

Based upon the preceding, the following identifies a potential Ph.D. in the Faculty of Architecture.

I. Program Description

The Ph.D. will have an initial focus upon interdisciplinary Design and Planning theory and research methods, particularly the advancement of Design and Planning theory, in the four design disciplines (architecture, interior design, landscape architecture, planning). There will be a special emphasis upon the

inter-relationship of the disciplines as they collectively inform Design and Planning discourse. Dissertation topics will be encouraged to explore the discovery and formulation of planning -related and design-related questions that affect societal and environmental well-being, particularly in an interdisciplinary context.

a. Admission Requirements

Students who have a Masters degree in a planning or design discipline (architecture, planning, interior design or landscape architecture or equivalent related degree [e.g., urban design]) and who have met the requirements of the Faculty of Graduate Studies will be eligible for consideration to the program. Students who possess a Masters degree in another field outside of the Design and Planning disciplines may be considered if they have an undergraduate degree in planning or a design discipline and have an accumulated grade point average of 3.75 in their Masters degree³. Preference will be given to candidates who have a professional degree, have distinguished themselves in professional practice and/or professional education, and have demonstrated interdisciplinary experience and/or knowledge.

As part of their application and following discussions with potential advisor(s), prospective candidates will be asked to describe their research questions in detail and identify their area of proposed specialisation. Candidates will declare a specialisation in one of five areas: *building structures, design and planning education, design and planning practice, design and planning theory, or sustainable design and planning*.

Candidates to the program will provide: (a) a Problem Statement and Study/Research Rationale (i.e., a description of proposed study [minimum of 5 pages and maximum of 10 pages]); (b) a dossier of their work; (c) evidence of financial support; and (d) three letters of reference from distinguished members of the planning and/or design profession(s) or equivalent institutions. All candidates to the program will be interviewed once by three faculty members (and no more than five), two of whom will be from the Faculty of Architecture.

b. Course Requirements

All students will be required to take a minimum of 12 credit hours of 700 level courses of which 6 credit hours must include Advanced Theory of Design and Planning (3) and Advanced Research Methods in Design and Planning (3). All students will complete a Comprehensive Methods Paper, and a Comprehensive Design and Planning Theory Project at the completion of their course work, prior to the candidacy examination. Students are expected to take two additional 700 level courses as part of their approved program to a minimum of 6 additional credits.

Given the interdisciplinary nature of Design and Planning, a large number of 700 courses, that will be offered to the students in the Faculty of Architecture Ph.D. program, will be delivered by other Faculties, most notably Education, Engineering and Environment. The following program offerings are possible using existing courses offered by Architecture and other Faculties (see: Attachment I for detailed course descriptions).

Building Structures focus:

023.710	050.760
050.761	023.714
023.726	

³ A higher GPA is identified for these candidates to ensure that there is a preference given to those students with a graduate design degree in recognition that students with a graduate design degree will be better prepared to complete a Ph.D. in a design based Faculty.

Design and Planning Education focus:

050.758	051.718	031.725	129.701
073.703	051.719	129.707	129.702
129.780	129.781	129.708	129.720

Design and Planning Practice, Design and Planning Theory focus:

050.758	050.759	073.742	051.725
073.703	073.741	051.720	031.726
051.717	051.719	031.725	050.734
031.713	031.721	050.761	073.747
073.746	050.760		

Sustainable Design and Planning focus:

050.758	031.720	073.734
031.717	073.746	053.703
073.707	056.718	051.724
056.724	050.760	053.706
050.759	051.718	

c. Evaluation of Students: Procedures

Each student will be appointed a Ph.D. Advisor who will be the student's Thesis Advisor, responsible for advising the student on course selection and chairing the student's Thesis Committee. Students will develop a program of study in consultation with their appointed Advisor who has a Ph.D. and is a member of the Faculty of Architecture and the Faculty of Graduate Studies. The Advisor will ensure that the Ph.D. student has been given a copy of the Faculty Supplementary Ph.D. Regulations and that the advisor has reviewed the Regulations with the Ph.D. student.

A system of ongoing Ph.D. student evaluation will be completed through the office of the new (to be appointed) Associate Dean: Academic. The results of the evaluation will be forwarded to the Faculty of Graduate Studies. The evaluation of students will be completed by:

- Applying Faculty Supplementary Ph.D. Regulations (see Attachment 2);
- Maintaining a personal record of a completed annual evaluation by the Associate Dean: Academic and Advisor of each Ph.D. student; the resulting review being accessible to the student and available for review; and
- Using the Faculty of Graduate Studies Annual Program Review form.

The intent is that student evaluations follow prescribed requirements, are recorded, available in written form and shared with the students.

d. Thesis Procedures and Regulations

The Ph.D. will be a research degree culminating in a thesis/dissertation.

e. Ability to Transfer Courses

Transfer of courses will be considered on a case-by-case basis.

f. Other Procedures

II Degree Granted

The proposed degree offered will be in the form of a Doctor of Philosophy.

a. Rationale for name: Ph.D.

The Ph.D. will be delivered as a highly regarded interdisciplinary Design and Planning focused program. The central feature of the degree will be its relationship to Design and Planning disciplines and Design and Planning issues. Design and Planning issues are increasingly important elements of ecological, economic, and social decision-making, particularly in matters related to sustainability and quality of life. Use of the words 'design and planning' is a purposeful recognition of the two foci, gives recognition to the strength of the Faculty, and confirms the importance of design and planning as contributors to the debate about the built environment.

Two foci are proposed, (i.e., in Design, and in Planning). The two streams better recognise the specialisation inherent at the doctorate level where candidates will be expected to explore a discourse that is specific to their discipline. A Ph.D. with a specialisation in any one of the Faculty's four disciplines will not indicate appropriately the interdisciplinary emphasis of the Ph.D. degree. As well, a discipline-based Ph.D. will not address the emerging international consensus on the need for design-based Ph.D. research degrees. For that reason, the Faculty proposes two degree foci: a. Design and b. Planning, based upon the subject matter and specifics of the research agenda.

b. Name elsewhere

Ph.D. offerings in interdisciplinary Design and Planning are rare. There are no comparable interdisciplinary Design and Planning faculties that offer a Ph.D. in Canada. In particular, there is no other Canadian institution that offers a Ph.D. (in Design) and only four that offer a Ph.D. (in Planning)

c. List of groups consulted

A Ph.D. composed of a cross-section of members of the Faculty provided advice and input to the proposal. Faculty Council was consulted on three occasions and approved the proposal in principle in May, 2003. The following professional groups were consulted:

- Manitoba Association of Architects;
- Manitoba Association of Landscape Architects;
- Manitoba Professional Planners Institute;
- Professional Interior Designers Association of Manitoba.

Within the University of Manitoba, the Faculties of Arts, Education, Engineering and Environment were consulted (see Attachment 3).

d. Accreditation

Although the four design profession degrees at the Masters level are accredited, it is not the intent to seek accreditation for the proposed Ph.D.

4. Projections and Implementation

I Sample Program

Students will be expected to complete their degree within five years of registration. As a minimum, students will be required to enroll in the program full-time for the first year. The program will require that all students begin their studies in an interdisciplinary context by taking the Advanced Theory of Design and Planning and Advanced Research Methods in Design and Planning in their first year. Following completion of the two Advanced Theory and Research Methods courses, students will specialise in their respective areas during the next year of study for a total full-time study period of two years. All course requirements will be taken within two years of entry to the program. All candidates will complete a Comprehensive Methods Paper and a Comprehensive Design Theory Project or a Comprehensive Planning Theory Project before proceeding to their Candidacy Examination and Research Dissertation (Figure 1).

Based upon their approved Problem Statement and Study/Research Rationale, students will be expected to develop a course of studies program with their Advisor, identifying courses within the Faculty and outside the Faculty that will form the basis for their Ph.D. course requirements. Students will be expected to meet with proposed instructors to determine the course availability and status of the student's admission to it. Each student will provide a course enrolment authorisation form from the proposed instructor for the student's file.

A sample program has been provided (Figures 2a and 2b). Figure 2a examines the potential course offerings for a specialisation in sustainable planning. Figure 2b identifies potential course offerings in a specialisation in sustainable design.

The proposed Ph.D. provides candidates the opportunity to specialise in their respective fields by choosing areas of specialisation (*building structures, design and planning education, design and planning practice, design and planning theory, and sustainable design and planning*). Candidates from a design background (i.e., architecture, interior design, landscape architecture or related area such as industrial design or urban design) may very likely (but not necessarily) choose to specialise in design education, design practice, design theory, and sustainable design. Candidates from design backgrounds in architecture and engineering will likely be the most qualified to explore building structures from an architectural design perspective. Candidates from a planning background (i.e., city, community, and regional planning or related area such as urban design) may very likely (but not necessarily) choose to specialise in planning education, planning practice, planning theory, and sustainable planning. While the same courses may be offered to students in the design and planning streams, the particular focus and emphasis of research within the course will be from the perspective of the declared research interest identified upon acceptance to the program of study. This will ensure that the interdisciplinary perspective of the Ph.D. is enforced through pedagogical discourse and topic research that is shared with other students and faculty.

II Enrolment

Enrolment is premised upon the acquisition of two additional Ph.D. faculty beyond current total faculty numbers (36) and current Ph.D. faculty numbers (9). Enrolment will be limited to 4 students in the first two years of the program and to 8 students thereafter or until additional resources permit otherwise.

III Distance education

Distance education is not anticipated.

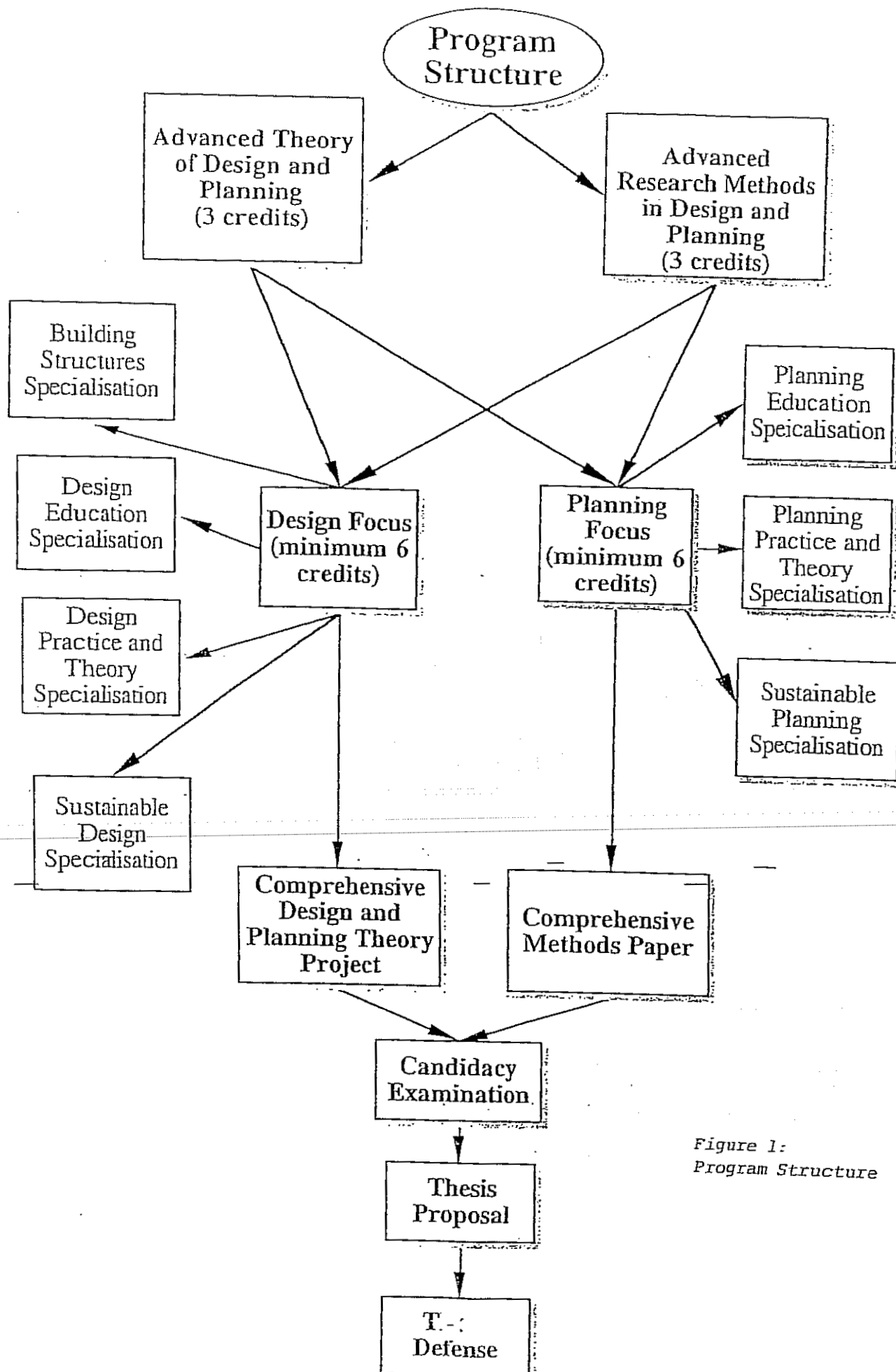


Figure 1:
Program Structure

Figure 2a: Sample Program
Sustainable Planning Specialisation

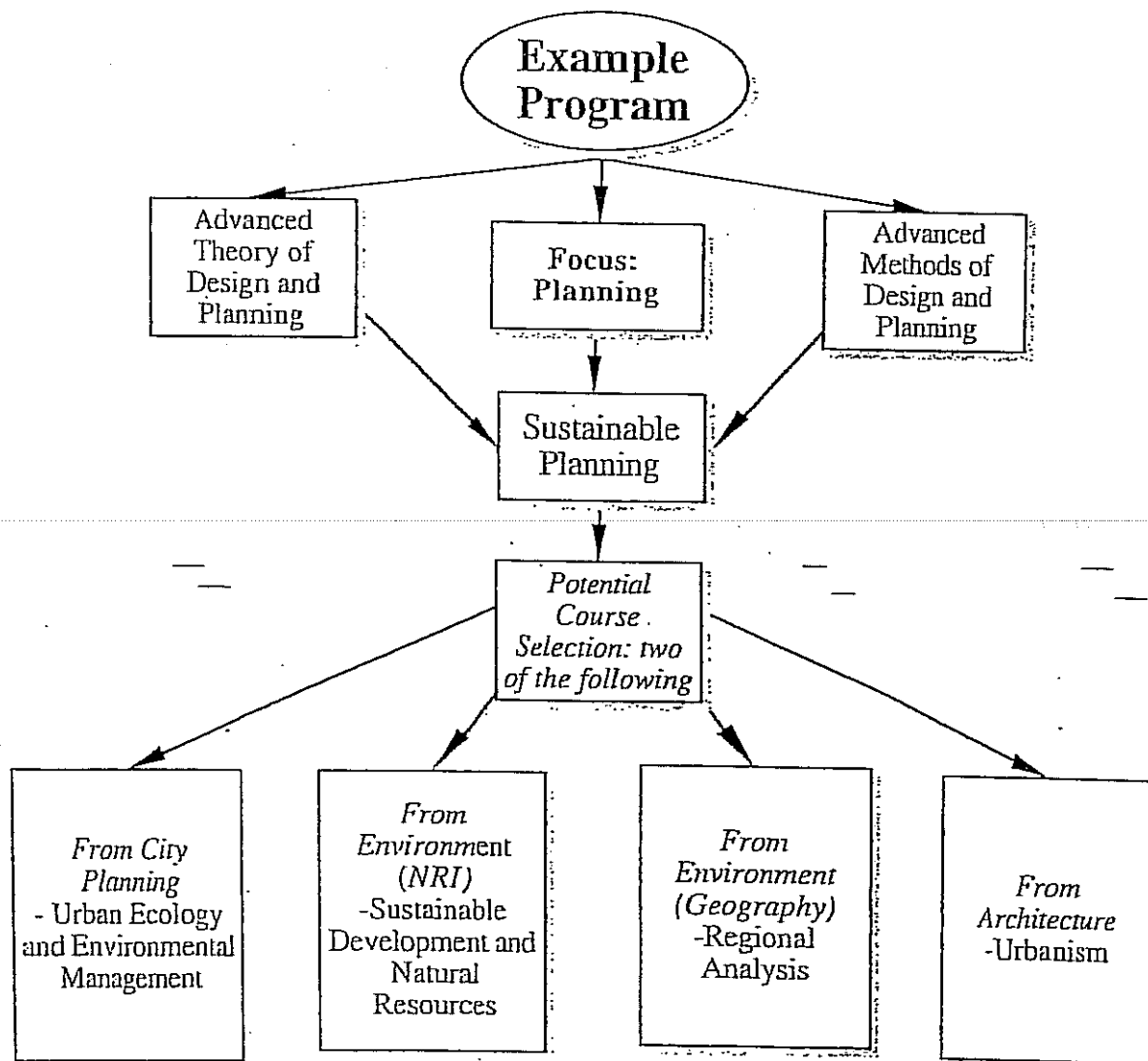
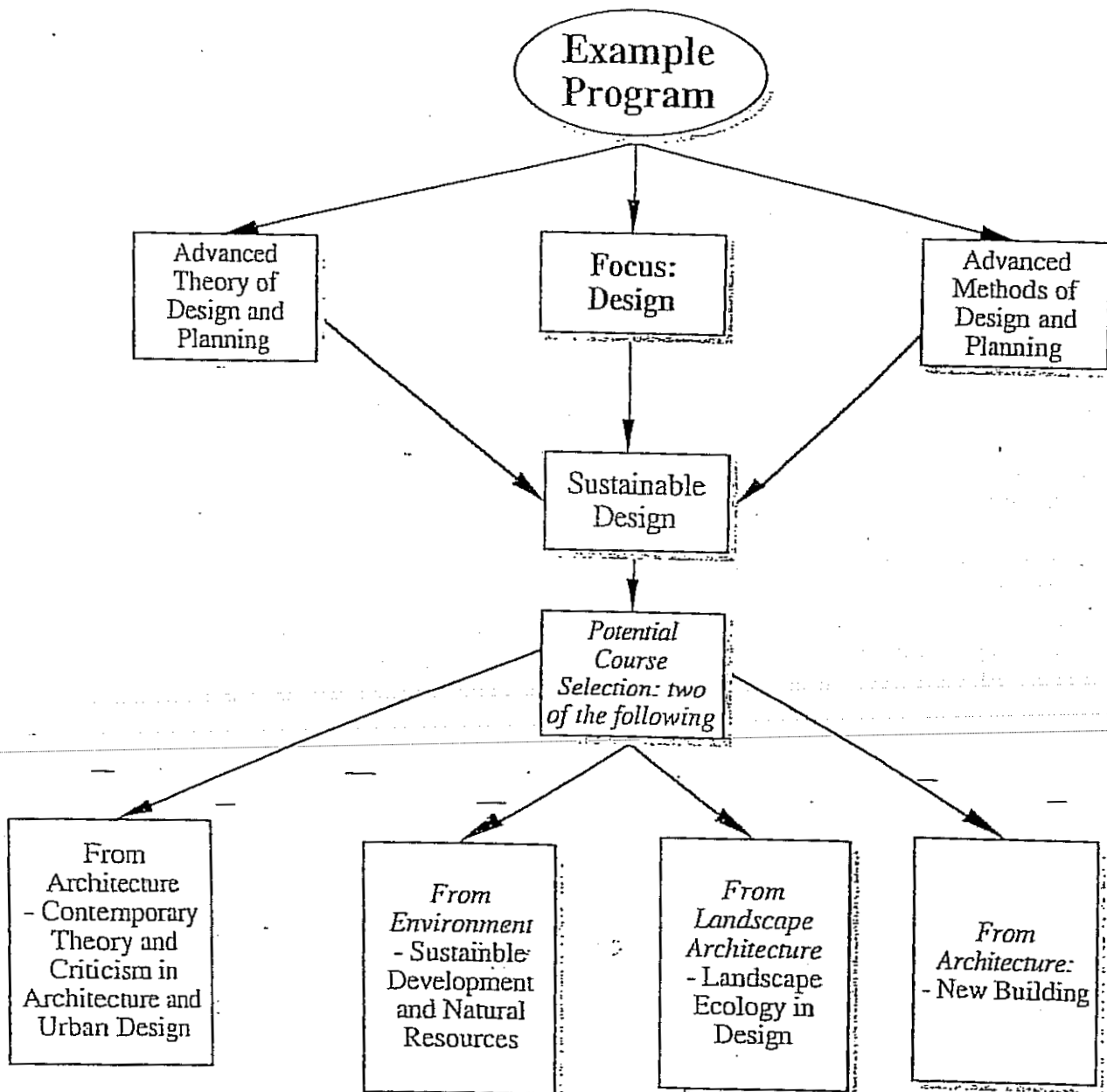


Figure 2b: Sample Program
Sustainable Design Specialisation



IV Schedule for implementation

It is proposed that the Ph.D. be offered in September 2006. A detailed schedule is provided (Figure 3).

B. Human Resources

The Faculty of Architecture has a highly regarded and recognised faculty. Many faculty members are registered with their respective professional associations (Manitoba Architects Association, Manitoba Association of Landscape Architects, Manitoba Professional Planners Institute, and Professional Interior Design Institute of Manitoba.). Nine full time professors have Doctorates (6 in City Planning, 3 in Landscape Architecture) and six others are currently enrolled in Ph.D. programs (3 in Interior Design and 3 in Landscape Architecture)⁴. Within three years the total number of faculty with Ph.D.'s is expected to be 14 or more than one third of the full time faculty. In addition, at least three existing faculty have indicated an interest in completing a Ph.D. over the next four years⁵.

In the meantime, the current complement of nine Ph.D. faculty could form the core for a Ph.D. program in Design and Planning. The existing Ph.D. faculty has a breadth of experience and expertise in design theory, ecological landscape design and planning, housing, landscape theory, planning theory, sustainable design and human settlement theory. With the addition of the five currently registered Ph.D. candidates who are Faculty members, the range of competencies would be expanded to include workplace, interior design theory, history of design, and landscape methods.

In addition, as part of its ongoing collaboration with the Faculty of Engineering, the Faculty of Architecture Ph.D. building structures specialty would make use of Engineering faculty members for purposes of instruction and Committee Advice. Other Faculties, such as Education and Environment will be important contributors to the Ph.D. course offering.

The delivery of the new Ph.D. is dependent upon the return of all existing SIP's, replacement of future retirements, and hiring of one new position in the Department of City Planning (proposed by Faculty for 2005) and one new Ph.D. position in the Department of Architecture (proposed by Faculty for 2008). Of the identified replacement positions, two (one in Architecture and one in Interior Design), will need to have a Ph.D.⁶ All other faculty members holding a Ph.D., who retire or resign, will be replaced by a new Ph.D. faculty member.

1. Faculty

The following lists all faculty members who are expected to contribute to the research Ph.D. program. Their home Departments are identified as follows:

Faculty with Ph.D.'s:

Architecture: one replacement position (currently approved search) and one new position (Faculty request for 2008);

City Planning: Dr. Blake, Dr. Bridgman, Dr. Skelton, Dr. van Vliet, Dr. Wight, Dr. Witty;

Interior Design: Dr. Karpan, Professor Madill (Ph.D. candidate: likely completion 2005), Dr. Mallory-Hill, one SIP replacement position;

⁴ At least two proposed new hires in the Department of Architecture will be required to have a Ph.D.

⁵ It is important to note that the Faculty must retain a mix of Ph.D. and practice-based faculty so that the needs of accreditation are addressed.

⁶ It is anticipated that several of the others will seek to complete a Ph.D. through the Faculty's 'grow our own' program

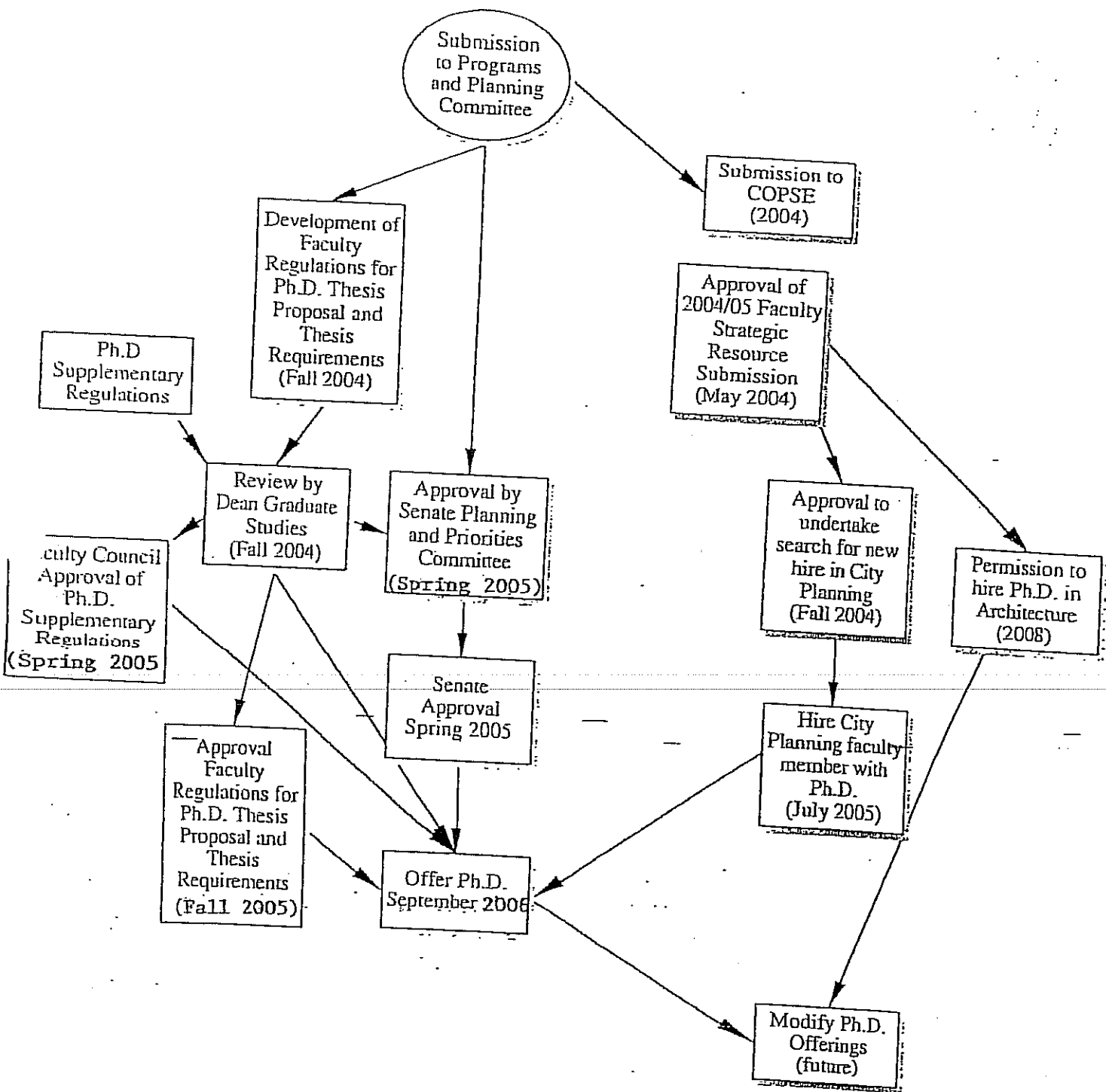


Figure 3: Implementation Schedule

Landscape Architecture: Dr. Eaton, Dr. Goto, Professor Perron (Ph.D. candidate: likely completion 2005), Dr. Nuttall, Professor Tate (Ph.D. candidate: likely completion 2007), Professor Wilson-Baptist (Ph.D. candidate: likely completion 2008).

Total: 18 potential Faculty of Architecture faculty with the Ph.D.s.

Faculty Association with program

a) Thesis Advisors:

Dr. Blake, Dr. Bridgman, Dr. Eaton, Dr. Goto, Dr. Karpan, Professor Madill (Ph.D. candidate: likely completion 2005), Dr. Mallory-Hill, Professor Perron (Ph.D. candidate: likely completion 2005), Dr. Nuttall, Dr. Skelton, Professor Tate (Ph.D. candidate: likely completion 2007), Professor Wilson-Baptist (Ph.D. candidate: likely completion 2008), Dr. van Vliet, Dr. Wight, Dr. Witty.

Plus new Ph.D. faculty: 1 replacement position and 1 new position (as noted above).

Total: 18 potential faculty with the Ph.D.s.

b) Thesis Committee members

Dr. Blake, Dr. Bridgman, Professor Chalmers, Dr. Carter (adjunct), Dr. Eaton, Professor Enns, Professor Epp, Professor Fuglem, Dr. Goto, Professor Harrop, Dr. Karpan, Professor Madill (Ph.D. candidate: likely completion 2005), Dr. Mallory-Hill, Dr. Nuttall, Professor Perron (Ph.D. candidate: likely completion 2005), Professor Tate (Ph.D. candidate: likely completion 2007), Dr. Skelton, Professor Subotincic, Dr. van Vliet, Professor West, Dr. Wight, Professor Wilson-Baptist (Ph.D. candidate: likely completion 2008), Dr. Witty.

Plus new Ph.D. faculty: 1 replacement position and 1 new position (as noted above). Total: 25 potential faculty affiliated with the Ph.D. program.

c) Course teachers

Architecture: Professor Enns, Professor Epp, Professor Fuglem, Professor Harrop, Professor Subotincic, Professor West, Ph.D. 1 replacement position and 1 new position;
City Planning: Dr. Blake, Dr. Bridgman, Dr. Skelton, Dr. van Vliet, Dr. Wight, new position;
Interior Design: Professor Chalmers, Dr. Karpan, Professor Madill (Ph.D. candidate), Dr. Mallory-Hill, 1 Ph.D. replacement position;
Landscape Architecture: Dr. Eaton, Dr. Goto, Dr. Nuttall, Professor Perron (Ph.D. candidate), Professor Tate (Ph.D. candidate), Professor Wilson-Baptist (Ph.D. candidate: likely completion 2008).

Total: 25 potential faculty affiliated with the Ph.D. program. As noted elsewhere in this section, this proposal is premised on the on-going return of all faculty positions (retirements and resignations) and the hiring of two new Ph.D. faculty (Department of Interior Design in 2006 and Department of Architecture 2008)⁷.

2. Support Staff

The Faculty's Graduate Student Advisors are apprised of the Ph.D. initiative. The Graduate Student Advisor responsible for the Department of Architecture is preparing to assume the duties of Ph.D. student advisor.

⁷ This submission is based upon the assumption that the Faculty's Staffing Plan will be implemented.

3. Other

No additional staffing resources are required. CADLab and Partners Program existing staff numbers will be able to support the addition of 8 Ph.D. students.

C. Physical Resources

1. Space

Space is at a premium in the Faculty. The existing John A. Russell building has one office uncommitted and will be reallocating the use of Room 115, thereby creating one new office space for a total of two available offices. The Architecture 11 building is currently at full capacity for faculty offices. The Faculty will be creating two new office spaces in Architecture 2 and relocating sessional instructors to address future faculty needs.

I Students

Students will be accommodated in existing office space that will be made available through the reallocation of existing space. Student space for eight Ph.D. students will be shared space located in Room 316 of the Russell Building. This space is adjacent to the studio space occupied by masters students.

II Administration

Administration space was redeveloped in 2002 to permit the creation of private space for the Graduate Officer.

2. Equipment

I Teaching

Instructional equipment is in place for the addition of Ph.D. students.

II Research

The Faculty of Architecture has consistently invested in information technology. The Faculty updates its three year technology investment plan on a yearly basis. The Faculty operates on a wireless network. Additional Ph.D. student use of current and future information technology will be accommodated within existing and proposed investments. The Faculty is developing research facilities in CAST and proposed CMAD, both of which will be available for Ph.D. student work.

3. Computer

The Faculty has instituted a mandatory computer purchase policy and technology program fee that will apply to Ph.D. students. Support equipment, necessary to support Ph.D. research and course work, exists through CADLab, the Faculty's technology department.

4. Library

Please see Attachment 4.

Bibliography

Boyer, E.L. and Mitang, L.D. (1996) *Building Community: A new future for architectural education and practice*, Princeton: Carnegie Foundation for the Advancement of Learning.

Canadian Architectural Certification Board, Visiting Team Report, Master of Architecture Programme, University of Manitoba, 2005

Fisher, T.R. (2000) *In the Scheme of Things: Alternative Thinking on the Practice of Architecture*, Minneapolis: University of Minnesota Press.

Nichol, D. and Pilling S., (2000) *Changing Architectural Education*, London: E&FN SPON.

Proposal for a School of Design at the University of California, Irvine, (2002) University of California, Irvine.

Schon, D.A., (1987) *Educating the Reflective Practitioner*, San Francisco: Jossey-Bass Publishers.

Attachment 1: Course Descriptions

Attachment 1: Course Description

Existing Courses Offered by Architecture and Other Faculties:

Building Structures focus:

023.710 Prestressed Concrete (3) A study of the analysis and design of prestressed concrete structures; pre-tensioning, post-tensioning, importance of material properties, modern design specifications.

023.714 Structural Masonry (3) Masonry materials, properties and behaviour. Plain and reinforced masonry, axial load, flexure, combined loading. Design methods, building code developments, building design.

050.761 Structural Concepts in Architecture 2 (3) A study of contemporary structural concepts and systems, their characteristics and behaviour. Examination of how structures resist and respond to external influences, loads and forces.

023.726 Behaviour of Reinforced Concrete members (3) Study of the actual behaviour and strength of reinforced concrete members; examination of recent significant publications, correlation to research with current design specifications and codes.

050.760 New Building (3) Synthesis of conceptual and technical aspects of architecture - site manipulation and landscape, systems of fabrication, weathering, climatic constraints, sequences of construction, interior fittings - in the consideration of contemporary precedent, 20th century technical innovation, and advanced building construction methods.

Design and Planning Education focus:

050.758 Contemporary Theory and Criticism in Architecture and Urban Design (3) The development of a theoretically informed base for design activity responding to a variety of studio themes. Strategic positions are examined within the context of history, theory, structures, construction, environmental behaviour and design technique.

051.718 Theory Seminar 1 - Contemporary Issues in Design (3) A theoretical exploration of contemporary design issues as they apply to Interior Design. Theory Seminar I introduces and supports the strategic intervention of the design studio. Historical precedent in relation to human activity, sensory stimulus, technological and social change, ecological awareness, and aesthetic judgement will form the context for discussion and debate.

031.725 Landscape Architecture Theory (3) Investigation of the theoretical foundations of landscape architecture in order to understand the complex nature of its practice, to identify its disciplinary boundaries, to understand its multidisciplinary nature and to investigate assumptions and myths that permeate its limited discourse.

129.701 Educational Administration as a Field of Study and Practice (3) An overview of educational administration, focusing on a review of some of the main intellectual traditions in the study of educational administration and on an analysis of some of the forces which shape administrative practice. Students may not hold credit for both 129.701 and the former 116.73 1.

073.703 Planning Theory 1 (3) the principal ideas and ideals influencing planning thought and practice, ranging from rational comprehensive planning to theories of societal guidance, ethics and the human-environment interface.

051.719 Theory Seminar 2 - Critical Perspectives (3) An examination of theoretical and philosophical approaches to design. Examines the practice of interior design through a variety of critical and historical perspective. Different modes of thought and manners of questioning will be used to debate issues which may include gender, ethics, diversity, materiality, technology & representation, and changing spatial typologies.

129.707 The Analysis of Educational Organizations (3) The application of methods of organizational analysis to educational institutions. Students may not hold credit for both 129.707 and the former 116.710.

129.702 Politics of Education (3) A review of the political features of educational organizations, with emphasis on value systems, community power structures, local government, and political change. Students may not hold credit for both 129.702 and the former 116.702.

129.780 Methods of Educational Research (3) A study of design and data collection techniques for educational research in field settings. Topics covered include quasiexperimentation, survey and observational techniques, simulation, content analysis, and sociometry. Students may not hold credit for both 129.780 and the former 043.709. Prerequisite: 129.580 or one of the former courses: 129.680, 043.610 or consent of instructor.

129.781 Evaluating Educational Programs (3) An introduction to current approaches to evaluating educational programs. A review of various evaluation methods/approaches, along with consideration of specific design, ethical, consulting and political issues will be the main focus of this course. Specific skills to be developed are the implementation of educational evaluations, data collection and analysis, and final report writing. Students may not hold credit for both 129.781 and the former 043.726.

129.708 Principles of Curriculum Organization and Implementation (3) A review of approaches to curriculum change and implementation. Major emphasis is placed on the systematic approaches to curricular change in education. Students may not hold credit for both 129.708 and the former 116.726.

129.720 Philosophy of Education (3) A study of the philosophic foundations of education. Emphasis will be given to various schools of philosophic inquiry as they relate to education and to contemporary philosophy of education issues. Students may not hold credit for both 129.720 and the former 116.735.

Design and Planning Practice, Design and Planning Theory focus:

050.758 Contemporary Theory and Criticism in Architecture and Urban Design (3) The development of a theoretically informed base for design activity responding to a variety of studio themes. Strategic positions are examined within the context of history, theory, structures, construction, environmental behaviour and design technique.

050.759 Urbanism (3) An examination of past and current notions of the North American city through a historiographic/theoretical reading of the city - applied to the development of human settlement - from Greek antiquity to the present day. Speculative ideas about the future form of the city will also be examined.

050.760 New Building (3) Synthesis of conceptual and technical aspects of architecture - site manipulation and landscape, systems of fabrication, weathering, climatic constraints, sequences of construction, interior fittings - in the consideration of contemporary precedent, 20th century technical innovation, and advanced building construction methods.

050.761 Structural Concepts in Architecture 2 (3) A study of contemporary structural concepts and systems, their characteristics and behaviour. Examination of how structures resist and respond to external influences, loads and forces.

050.734 Professional Practice (3) is concerned with the duties and responsibilities of an architectural practice; its divisions, office organization and administration. The lectures relate in scope and standard to current practice and its requirements, specifically to Manitoba and Canada.

073.703 Planning Theory 1 (3) the principal ideas and ideals influencing planning thought and practice, ranging from rational comprehensive planning to theories of societal guidance, ethics and the human-environment interface.

073.741 Planning Design 1 (6) Studio/workshop developing problem solving techniques and design skills in an area subject to environmental, social and economic change. Preparation of a planning report comprised of research and analysis, evaluation of feasible alternative strategies and design, synthesis and recommendations for implementation. Case studies from planning journals and planning practice in cities and regions.

073.742 Planning Design 2 (6) Studio/workshop building upon 073.741 as applied to an area of greater complexity, requiring the evaluation and integration of contributions from several planning related disciplines. Selected projects emphasise both the multidisciplinary and interdisciplinary nature of planning and the resolution of the problems posed. Case studies from planning journals and planning practice in cities and regions.

073.746 Urban Ecology and Environmental Management (3) Theoretical frameworks and theories in urban ecology and environmental management as they apply to municipal institutional frameworks and the role of environmental planning in urban and regional government.

073.747 Professional Planning Practice (3) An examination of the professional practice and praxis of planning, presented in collaboration with the Manitoba Professional Planners Institute, emphasizing the practice aspects of planning processes, and the political, institutional and legal systems that direct and/or inform planning.

051.717 Design Research Methods (3) Building on 079.364 Design Inquiry, this course addresses the role of quantitative and qualitative research methods in interior design. The subject will address the principles of quantitative and qualitative research methodologies, focusing on the relationship between research and interior design. Specifically identifying gaps in existing research, critical analysis and interpretation of existing research, representation of research intentions, methodologies, and results.

051.719 Theory Seminar 2 - Critical Perspectives (3) An examination of theoretical and philosophical approaches to design. Examines the practice of interior design through a variety of critical and historical perspective. Different modes of thought and manners of questioning will be used to debate issues which may include gender, ethics, diversity, materiality, technology & representation, and changing spatial typologies.

051.720 Masters Studio 1 - Strategic Issues (6) Masters Studio I focuses on developing strategic approaches to design, which address complex contextual issues and adaptive reuse of large-scale public space. Studio exploration responding to a range of complex contextual design issues. The studio focuses on methods of strategic analysis such as mapping and scenario planning to inform the configuration and resolution of new interior spatial forms. Large scale public space and the changing nature of contemporary culture will form the basis for the design projects.

051.725 Professionalism and Practice (3) Introduction to the profession and practice of Interior Design; types of practice; regulating bodies; education; career development; professional.

031.713/LO4 Geographic Information Systems (3) The theory and application of GIS technology in the planning of urban and regional landscapes.

031.721 Landscape Architecture Studio 7 (6) Advanced investigation of physical form within the context of urban and regional problem domains.

031.725 Landscape Architecture Theory (3) Investigation of the theoretical foundations of landscape architecture in order to understand the complex nature of its practice, to identify its disciplinary boundaries, to understand its multidisciplinary nature and to investigate assumptions and myths that permeate its limited discourse.

031.726 Landscape Architecture since 1900 (3) A study of significant works of landscape architecture since 1900, including those of Canada, within the context of cultural and ideological change over the world.

Sustainable Design and Planning focus:

050.758 Contemporary Theory and Criticism in Architecture and Urban Design (3) The development of a theoretically informed base for design activity responding to a variety of studio themes. Strategic positions are examined within the context of history, theory, structures, construction, environmental behaviour and design technique.

050.759 Urbanism (3) An examination of past and current notions of the North American city through a historiographic/theoretical reading of the city - applied to the development of human settlement - from Greek antiquity to the present day. Speculative ideas about the future form of the city will also be examined.

050.760 New Building (3) Synthesis of conceptual and technical aspects of architecture - site manipulation and landscape, systems of fabrication, weathering, climatic constraints, sequences of construction, interior fittings - in the consideration of contemporary precedent, 20th century technical innovation, and advanced building construction methods.

053.703 Regional Analysis (3) A seminar course reviewing theories of regional development which have planning applications. Further, it assesses government policy aimed at regional intervention and notes procedures of evaluation.

031.717 Landscape Ecology in Design 1 (3) The course complements 031.716 LA Field Ecology and expands on the concepts of communities, ecosystems, and biomes and the interactions of organisms with each other and non-living components in the environment For Landscape Architecture students or with consent of department head.

031.720 Landscape Architecture Studio 5 (6) The examination of theories and their contemporary application to regional scale landscapes with emphasis on environmental problem domains associated with land planning and design.

051.718 Theory Seminar 1 - Contemporary Issues in Design (3) A theoretical exploration of contemporary design issues as they apply to Interior Design. Theory Seminar I introduces and supports the strategic intervention of the design studio. Historical precedent in relation to human activity, sensory stimulus, technological and social change, ecological awareness, and aesthetic judgement will form the context for discussion and debate.

051.724 Sensory Technology 5 (3) A self-directed exploration of new and/or divergent technologies, with significance to the design of interior environments. Students will propose a self-directed or research project, nominating a full time staff advisor for the subject instructors' approval. The proposal will clearly establish learning objectives and outcomes, and assessment criteria.

073.707 Housing and Urban Revitalisation (3) Housing and urban revitalisation in the Canadian context. Housing demand and supply, structure of the housing market, Canadian housing policy, affordability and other selected housing issues, processes and strategies related to urban decline and revitalisation.

073.746 Urban Ecology and Environmental Management (3) Theoretical frameworks and theories in urban ecology and environmental management as they apply to municipal institutional frameworks and the role of environmental planning in urban and regional government.

073.734 Urban Development (3) The mechanics of urban development and its socioeconomic implications and underlying political forces. Practical field experience is involved in the form of an internship.

053.706 Urban land Use (3) An analytical study of the location patterns of various city land use, in terms of their geographic, economic, social and political determinants. Includes field research in Winnipeg.

056.724 Resource and Environmental Management Processes (3) Policy formulation and implementation; policy analysis processes; decision making in complex environments; environmental assessment process-theory and practice; environmental assessment policy development; components of legislated assessment process.

056.718 Sustainable Development and Natural Resources (3) An examination of the context, concepts, principles and applications of sustainable development and natural resources at the international, national and regional levels. Sustainable development is considered from three perspectives - environment, economy, and peoples' well-being. Particular attention is focused upon the implications of sustainable development for natural resources and environmental management.

Proposed New Course Offerings in the Faculty of Architecture:

Advanced Theory of Design and Planning: (new course for Ph.D. students only) Explores the core theories that have informed design and planning thought and practice, with particular reference to Canadian and North American based theories as they have framed theoretical discourse and the evolution of practice.

Advanced Research Methods in Design and Planning: (new course for Ph.D. students only) Explores qualitative and quantitative methods that have been used in design and planning research, with particular emphasis upon emerging methods including reference to methodologies for inclusion of minorities and gender sensitive research.



PROPOSAL FOR COURSE INTRODUCTIONS

DEPARTMENT Faculty of Architecture	PREPARED BY Dr. David Witty	DATE (mm/dd/yyyy) June 22, 2004
---------------------------------------	--------------------------------	------------------------------------

COURSE TO BE INTRODUCED

COURSE NUMBER	COURSE TITLE	CREDIT HOURS
166.7XX	Advanced Theory of Design and Planning	3

ABBREVIATED COURSE TITLE (Maximum 15 characters) Ad. Th. Des. and Plg.	SPECIFY PRE-REQUISITES (IF ANY) 0
---	--------------------------------------

PROPOSED NEW CALENDAR DESCRIPTION – must not exceed 4 lines, 75 characters per line

Explores the core theories that have informed design and planning thought and practice, with particular reference to Canadian and North American based theories as they have framed theoretical discourse and the evolution of practice.
--

STATE REASONS FOR THE INTRODUCTION OF THE NEW COURSE

to support new Ph.D. program.

PROBABLE NO. OF STUDENTS ENROLLING IN THE COURSE:

COURSE OFFERING CYCLE: YEARLY ☒ EVERY TWO YEARS ☐

IS THERE ANY DUPLICATION OR OVERLAP WITH EXISTING COURSES? YES ☐ NO ☒
If yes, a statement justifying the overlap must be appended.

IS THERE ANY ADDITIONAL COST IN TERMS OF STAFF AND/OR FACILITIES? YES ☐ NO ☒
If yes, a statement from the Budget Dean must be appended.

LIBRARY RESOURCES:

- A statement from the subject librarian must be appended regarding adequate support, additional copies of holdings, forthcoming publications, replacement costs, etc.
- The library will need one month's notice to prepare its statement.
- The proposing unit and the subject librarian should discuss and agree upon the bibliography to be used in assessing the strength of the library's collection in the field.

TOPICAL OUTLINE

Please append a course outline including a bibliography (selected texts, periodicals, etc.)

Where necessary, please attach further information on separate pages

SIGNED APPROVAL

HEAD OF DEPARTMENT

CHAIR, FACULTY GRADUATE COMMITTEE

BUDGET DEAN

Silvestri

166.7XX Advanced Theory of Design and Planning Proposed Course Outline

Faculty of Architecture
University of Manitoba

Aims

The course is intended to promote critical thinking and provide opportunities to explore in detail key issues, ideas and theories about design and planning, particularly in relation to Canadian and North American context. The considerations to be examined include:

- The relationship of design and planning theories to the evolution of design and planning practice;
- Ways in which design and planning theories have been understood to shape built form;
- The factors that have shaped design and planning theories, their commonalities and disjuncture;
- Theory discourse as a means of discovering design and planning meaning;
- The role of theory in practice, research and discovery; and
- The relationship of design and planning theories to other discipline theories as a means of identifying commonalities of interest.

Organisation and Assignments

The class will be a seminar format with discourse and dialogue the central means of idea exploration. The class will be organised in four parts: evolution of design and planning thought; design and planning discipline theories: their contribution to thought and practice; and presentation of papers by students.

Written work should be submitted in hard copy to the instructor and participants. It will be 1 1/2 spaced with a text font of 12. A consistent format for text and citations should be used.

There will be one written assignment on a topic mutually agreed to by the instructor and student. A critical statement outline will be developed for purposes of defining the details of the paper's subject. The statement outline will be worth 10% of the course grade. The written assignment will be a critical position statement worth 50% of the course grade. The presentation of the critical position statement and role as discussion leader in discussing the critical position statement will be worth 20% of the course grade. Participation and contribution to class discourse will be worth 20%.

The critical position statement will be review and presentation of a topic that addresses one of the six aims described above. Please discuss your proposed topic as soon as possible with the instructor before proceeding to the development of a statement outline. The critical position statement should in the order of 8,000 words.

Submitting work late will involve a penalty, usually of at least a half grade.

Weekly Outline

Week 1-2 : Introduction: Evolution of design and planning thought

- expectations and course work
- societal influences on theory development
- emerging contemporary discourse that informs theory
- theory and practice a discordant dialogue
- identification and assignment of topics for the presentation section

Week 3- 5: Theme discussion: Design and planning discipline theories

- selection of three themes (based upon class makeup)
- theme discussion (one theme per week)

Week 6-12: Presentations: Contribution of theory to thought and practice

- student presentations of topics identified in week 2
- each student will present and lead a discussion on a topic
- all students will be expected to complete background reading for each session
- each student presenter will provide a reading list of 3-5 readings to inform the theme discussion

Week: 15: Delivery of completed papers



PROPOSAL FOR COURSE INTRODUCTIONS

DEPARTMENT Faculty of Architecture	PREPARED BY Dr. David Witty	DATE (mm/dd/yyyy) June 22, 2004
---------------------------------------	--------------------------------	------------------------------------

COURSE TO BE INTRODUCED

COURSE NUMBER COURSE TITLE CREDIT HOURS

166.7YY	Advanced Research Methods in Design and Planning	3
---------	--	---

ABBREVIATED COURSE TITLE (Maximum 15 characters) Ad. Res. Methods	SPECIFY PRE-REQUISITES (IF ANY) 0
--	--------------------------------------

PROPOSED NEW CALENDAR DESCRIPTION – must not exceed 4 lines, 75 characters per line

Explores qualitative and quantitative methods that have been used in design and planning research, with particular emphasis upon emerging methods including reference to methodologies for inclusion of minorities and gender sensitive research.

STATE REASONS FOR THE INTRODUCTION OF THE NEW COURSE

to support new Ph.D. program

PROBABLE NO. OF STUDENTS ENROLLING IN THE COURSE:

COURSE OFFERING CYCLE: YEARLY ☒ EVERY TWO YEARS ☐

IS THERE ANY DUPLICATION OR OVERLAP WITH EXISTING COURSES?

YES ☐ NO ☒

If yes, a statement justifying the overlap must be appended.

IS THERE ANY ADDITIONAL COST IN TERMS OF STAFF AND/OR FACILITIES?

YES ☐ NO ☒

If yes, a statement from the Budget Dean must be appended.

LIBRARY RESOURCES:

- A statement from the subject librarian must be appended regarding adequate support, additional copies of holdings, forthcoming publications, replacement costs, etc.
- The library will need one month's notice to prepare its statement.
- The proposing unit and the subject librarian should discuss and agree upon the bibliography to be used in assessing the strength of the library's collection in the field.

TOPICAL OUTLINE

Please append a course outline including a bibliography (selected texts, periodicals, etc.)

Where necessary, please attach further information on separate pages

SIGNED APPROVAL

HEAD OF DEPARTMENT

CHAIR, FACULTY GRADUATE COMMITTEE

BUDGET DEAN

Signature

166.7YY Advanced Research Methods in Design and Planning Proposed Course Outline

Faculty of Architecture
University of Manitoba

Aims

The course is intended to explore research methods pertinent to the study of design and planning. The considerations to be examined include:

- Potential research tools and techniques that are pertinent to the exploration of design and planning theory, practice, and development;
- Exploration of emerging research processes and methodologies that inform minority and feminist discourse;
- Review of the evolution of design and planning research methods;
- Analysis of the relationships between research methods in aligned disciplines as those research methods may inform design and planning understanding.

Organisation and Assignments

The class will be a seminar format with discourse and dialogue the central means of idea exploration. The class will be organised in four parts: evolution of design and planning research methods; design and planning discipline research methods: their contribution to thought and practice; and presentation of papers by students.

Written work should be submitted in hard copy to the instructor and participants. It will be 1 1/2 spaced with a text font of 12. A consistent format for text and citations should be used.

There will be one written assignment on a topic mutually agreed to by the instructor and student. A research methods paper outline will be developed for purposes of defining the details of the paper's subject. The outline will be worth 10% of the course grade. The written assignment will be a research methods paper worth 50% of the course grade. The presentation of the research methods paper and role as discussion leader in discussing the paper will be worth 20% of the course grade. Participation and contribution to class discourse will be worth 20%.

The research methods paper will review a topic that addresses one of the four aims described above. Please discuss your proposed topic as soon as possible with the instructor before proceeding to the development of a paper outline. The research methods paper should be in the order of 6,000 words.

Submitting work late will involve a penalty, usually of at least a half grade.

Weekly Outline

Week 1-2 : Introduction: Evolution of design and planning research methods

- expectations and course work
- the evolution of research as scholarship and its meaning to society
- research as scholarship and its contribution to design and planning theory
- identification and assignment of topics for the presentation section

Week 3- 5: Theme discussion: Design and planning discipline research methods

- selection of three themes (based upon class makeup)
- theme discussion (one theme per week)

Week 6-12: Presentations: Contribution to thought and practice

- student presentations of topics identified in week 2
- each student will present and lead a discussion on a topic
- all students will be expected to complete background reading for each session
- each student presenter will provide a reading list of 3-5 readings to inform the theme discussion

Week: 15: Delivery of completed papers



UNIVERSITY
OF MANITOBA

Architecture / Fine Arts Library

Russell Building
84 Curry Place
Winnipeg, Manitoba
Canada R3T 2N2
Telephone (204) 474-9216
Fax (204) 474-7539

November 25, 2003

To: David Witty, Dean, Faculty of Architecture

From: Mary Lochhead, Head, Architecture/Fine Arts and Music Library

Re: Proposed PhD in Design and Planning

Please find attached my assessment of our collection in terms of supporting the proposed PhD in Design and Planning. The University of Manitoba Libraries can support this program. The resources, particularly those in the Architecture/Fine Arts Library, are strong in all areas - architecture, city planning, interior design and landscape architecture. The collections in other unit libraries such as the E. Dafoe Library, the Sciences and Technology Library, and the Management Library are also strong in the areas related to this proposal. The growing collection of electronic material will also be a critical resource for students and faculty in this program.

Faculty members identified a number of journals which would enhance our current holdings. One time costs to acquire selected back issues would be \$2398.00C and ongoing subscriptions costs would be \$1020.00C (with expected increases due to inflation each year). External funding is required to support the acquisition of the back issues and the annual subscription costs.

cc. C. Presser, Director of Libraries
J. Horner, Coordinator, Collections

Attachment 3
Program Approval Process - Proposal
Financial

University of Manitoba - Faculty of Architecture
Program Request: Ph.D. in Design and Ph.D. in Planning

	2005-2006 (1)	2006-2007 (2)	2007-2008 (3)	2008-2009 (4)	Total Amount Program Funding
	Funding Year 1	Funding Year 2	Funding Year 3	Funding Year 4	Over 4 year period
Direct Program Costs					
Number of Positions					
Hire Assistant Prof (City Planning) July/5	1	0	0	0	1
Hire Assistant Prof (Architecture) July/08	0	0	0	1	1
Total Academic Positions	1	0	0	1	2
Salaries					
Assistant Prof July/05 (\$55 K Base Salary)	\$ 41,250.00	\$ 57,750.00	\$ 60,637.50	\$ 63,669.38	\$ 223,306.88
Assistant Prof July/08 (\$65 K Base Salary)	\$ -	\$ -	\$ -	\$ 60,185.00	\$ 60,185.00
Operating					
Recruitment	\$ 12,000.00	\$ -	\$ -	\$ 12,000.00	\$ 24,000.00
Research Support Incentives	\$ 5,000.00	\$ -	\$ -	\$ 5,000.00	\$ 10,000.00
Capital					
Computers	\$ 4,000.00	\$ -	\$ -	\$ 4,000.00	\$ 8,000.00
Office Equipment	\$ 500.00	\$ -	\$ -	\$ 500.00	\$ 1,000.00
Library Support	\$ 3,400.00	\$ 1,000.00	\$ 1,000.00	\$ 1,000.00	\$ 6,400.00
Total Direct Program Costs	\$ 66,150.00	\$ 58,750.00	\$ 61,637.50	\$ 146,354.38	\$ 332,891.88
Indirect Program Costs					
Salaries	\$ -	\$ -	\$ -	\$ -	\$ -
Operating	\$ -	\$ -	\$ -	\$ -	\$ -
Capital					
New Office Construction (2)	\$ 25,000.00	\$ -	\$ -	\$ -	\$ 25,000.00
PhD Student Office	\$ 10,000.00	\$ -	\$ -	\$ -	\$ 10,000.00
Total Indirect Program Costs	\$ 35,000.00	\$ -	\$ -	\$ -	\$ 35,000.00
Program Revenue					
Enrollment (each year)	2 Students	2 Students	2 Students	2 students	8 Students
Tuition Fees (Based on \$4177 program fee over 2 years plus \$674 for re-reg)	\$ 8,354.00	\$ 16,708.00	\$ 18,056.00	\$ 19,404.00	\$ 62,522.00
Total Net Program Cost	\$ 92,796.00	\$ 42,042.00	\$ 43,581.50	\$ 126,950.38	\$ 305,369.88

November 14, 2004

Dr. Pamela Hawranik
Associate Dean (Programs and Planning)
Faculty of Graduate Studies
Room 500, University Centre
University of Manitoba
Winnipeg, MB R3T 2N2

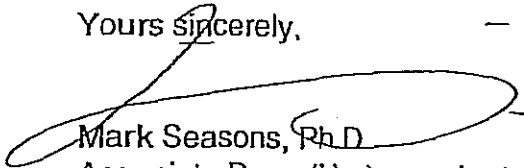
Dear Dr. Hawranik:

I am pleased to provide you with my assessment of the University of Manitoba's proposed Ph.D. (Planning and Design) in the Faculty of Architecture.

I enjoyed the opportunity to contribute to this exercise. It was a pleasure to meet you and your colleagues at the University.

Please do not hesitate to contact me should you wish to discuss any aspect of this report.

Yours sincerely,



Mark Seasons, Ph.D.
Associate Dean (Undergraduate Studies
and Student Liaison)
Associate Professor (School of Planning)
Faculty of Environmental Studies

attachment

1. Context

The Faculty of Architecture proposes to develop and launch a Ph.D. (in Design and in Planning), effective September, 2005. This report contributes to the University of Manitoba's program review process which requires assessments of degree proposals from two external reviewers. This assessment responds to the University of Manitoba's "External Reviewer's Report" (n.d.) guidelines which request that external reviewers:

- summarize the site visit, including meetings with individuals and visits to facilities related to the program,
- assess faculty competence with regard to graduate student teaching and supervision,
- evaluate standards and procedures to be used when admitting students to the program,
- comment on the anticipated enrollment and quality of incoming students,
- consider the appropriateness and rigor of curriculum requirements,
- review resources, specifically support for students, library holdings, space, and facilities,
- identify strengths and weaknesses in the proposal,
- suggest modifications to the proposal, where appropriate, and
- provide summary and concluding comments.

Research approach

This report is based on preparatory research that comprised a review of University of Manitoba information, as well as interviews that were conducted with a total of 15 key informants. The interviewees were selected by the proponent and included representatives of the University administration; faculty, staff and students from the Faculty of Architecture; and a senior representative from the professional community. The interviews were open-ended in format. The list of interviewees is provided in Appendix A.

2. Executive Summary

- there is a market in Manitoba, Canada and internationally for a doctoral program in the Planning and Design disciplines.
- the Faculty of Architecture has the capacity and potential to deliver a solid doctoral program in "Planning and Design".
- the optimal scenario would require hiring experienced faculty for new or replacement positions. These new faculty should be mid-career, with an established and recognized research track record, and experience in supervision of doctoral candidates.
- funding for graduate students would attract top-rank graduate students.
- the proposed curriculum is comprehensive and appropriate for education at the doctoral level.
- core courses should include qualitative and quantitative research methods.
- the proposed specializations are supportable as a means of establishing the Faculty of Architecture's research expertise and niche in doctoral programs.
- the pre-comprehensive coursework could be completed within 24 months.
- the degree name should be "Environmental Design", which reflects the diversity of expertise, research interests and traditions of the Faculty.
- accreditation by professional bodies is unnecessary because candidates are presumed to have acquired these credentials.

3. Proposal

According to the Proposal (Faculty of Architecture, 2004a), the Faculty has identified a need for a doctoral degree (Ph.D. - Design and Planning). This degree is described as "unique in Canada" (Faculty of Architecture, 2004a, p.6). The proposed degree would serve several purposes:

- bring the Faculty in line with other University of Manitoba Faculties in terms of research capacity,
- respond to the University's five institutional priorities,
- build upon and extend the interdisciplinary culture of the Faculty, and
- meet a pressing need in Manitoba, Canada and internationally for advanced education in design.

The degree would have two streams or foci: *Planning* and *Design*. The stream in Design would "build on the strengths of the architecture, interior design and landscape architecture faculty and associated emerging research agenda in building structures" (Faculty of Architecture, 2004a, p.3). The Planning stream would "focus on the broader planning research agenda...such as community-based planning and design, sustainable development at the regional scale, and aboriginal planning" (Faculty of Architecture, 2004a, p.3).

Candidates are anticipated to have interdisciplinary experience and related graduate degrees. The projected intake would comprise 4 doctoral candidates/year initially, with expansion to 8 candidates/year once the program matures and resources are in place.

Candidates would declare a specialization in one of five areas:

- building structures,
- design and planning education,
- design and planning practice,
- design and planning theory, or
- sustainable design and planning.

In each case, curriculum content guidelines are provided, with course delivery by the Faculty of Architecture in association with other University of Manitoba faculties, as well as the University of Winnipeg's Institute for Urban Studies (Faculty of Architecture, 2004a, pp.6-9).

4. Findings

a. The proposal complies with and furthers the University's academic ambitions.

The University of Manitoba is one of Canada's largest research institutions. Its Strategic Academic Plan (2002) articulates the University's expectation for performance:

To affirm the position of the University of Manitoba among the best of Canada's research-intensive institutions, and to lead our nation in demonstrating a commitment to the education of a broad sector of society (p.4).

The Strategic Academic Plan identifies five institutional priorities:

1. provide access to an exceptional education,
2. attract and retain the best,
3. be a centre for research and graduate education that makes a difference to our province, our nation and our world,
4. provide the human, physical and technological infrastructure necessary for learning and research, and
5. be at the centre of our community: on Manitoba (pp.6-11).

b. Faculty have sufficient research and graduate student teaching and supervision expertise.

The program can be delivered in a satisfactory manner by existing faculty. The intention to hire new faculty with Ph.D.s is very encouraging and necessary. However, the Faculty should strive to attract faculty who have significant research and supervisory experience. Ideally, faculty at the associate or full professor level should be recruited.

The Faculty of Architecture is one of 18 faculties and 5 Schools at the University of Manitoba (University of Manitoba, 2004a). The Faculty was founded in response to demands for education, training and research in the professions of city planning, architecture, landscape architecture and interior design.

The Faculty's guiding philosophy is interdisciplinarity in its fullest sense. According to the Faculty's (2004b) *Vision statement*:

The Faculty of Architecture aspires to offer highly recognized design and planning undergraduate and graduate programs that promote and develop a respectful, collegial, interdisciplinary culture of teaching, scholarship and service within the University and beyond.

Further, the Faculty's (2004b) two-part *Mission statement* explains that:

The Faculty of Architecture offers professional education dedicated to the design of the built and natural environment, and human settlements.

We aspire to provide exceptional teaching, scholarship and community service in architecture, city planning, environmental design, interior design, landscape architecture and emerging areas of design education and practice.

The Faculty offers master's level degrees in City Planning, Architecture, Interior Design and Landscape Architecture. It also offers a Bachelor of Environmental Design undergraduate degree, which is a pre-professional (non-accredited) degree that leads to graduate studies, and a pre-Master's program (University of Manitoba, 2004c). Each of the four graduate degrees has consistently received accreditation from its respective professional body. In the 2003/04 academic year, the Faculty had 278 undergraduate students and 268 graduate students (University of Manitoba, 2004b). There are 31 full-time faculty and 15 adjunct professors distributed as described in Table 1.

Table 1 – Faculty numbers by rank and program

	Professor	Assoc. Prof.	Asst. Prof.	Adjuncts
Architecture	2	2	4	5
City Planning	1	4	1	6
Interior Design	0	5	4	0
Landscape Architecture	1	4	3	4
TOTALS	4	15	12	15

Source: University of Manitoba, 2004c

The Faculty has a strong reputation for its well-established, progressive and interdisciplinary approach to design challenges. Its programs are very strong and perceived as such by students and potential employers in Winnipeg specifically, Manitoba and the rest of Canada, as well as internationally.

Clearly, doctoral programs require faculty with doctorates to supervise students' research, and to teach advanced research skills. At present, Architecture faculty lack doctoral degrees; this is a common challenge for this discipline. However, new hires in Architecture and the other units will be expected to hold Ph.D.s upon arrival, and there are indications that some existing faculty intend to complete doctorates. As noted in the Proposal, "within three years, the total number of faculty with Ph.D.s is expected to be 14 or more than one-third of the full-time faculty" (Faculty of Architecture, 2004a, p.15).

Most important, many of the faculty in the other three units – City Planning, Landscape Architecture, and Interior Design – hold doctorates. All faculty in City Planning have doctorates, while approximately 50% of faculty in Landscape Architecture and Interior Design units have doctorates or are enrolled in doctoral programs. Architecture faculty will be active dissertation committee members, while faculty with doctorates in the other units will be able to supervise Ph.D. candidates, and sit on dissertation committees.

There are indications that faculty are over-stretched as they strive to excel in teaching, supervision and scholarship. It appears that a small group of faculty carries a disproportionate share of the research and supervisory load. This perception/reality needs to be considered as the Faculty develops its faculty recruitment strategy.

The recruitment of new faculty with Ph.D.s will certainly strengthen the Faculty's research and supervisory capacity. The Faculty should strive to attract faculty who have significant research and doctoral supervisory experience. This means that, ideally, faculty at the associate or full professor level should be recruited for new or replacement positions. The recruitment of senior faculty would accelerate and enhance the program's efforts to achieve excellence.

c. The program admission standards are appropriate

The standards are sensible and appropriate because they ensure that candidates are already grounded in planning or the design disciplines, thereby improving the probability of candidate success in the program.

The proposal notes that eligible candidates will hold a Master's degree in planning or design discipline (architecture, planning, interior design, or landscape architecture). Students from other disciplinary background may be considered if they have at least one degree in one of planning or allied design disciplines. Further, preference will be given to candidates who have "distinguished themselves in professional practice and/or professional education, and have demonstrated interdisciplinary experience and/or knowledge" (Faculty of Architecture, 2004a, p.8).

Applicants will also be required to submit their research questions and to declare an area of research specialization. Additional information includes a dossier of work, evidence of financial support, and letters of reference (Faculty of Architecture, 2004a, p.8). These are reasonable requirements.

d. The enrollment and quality of candidates is appropriate

The proposed initial enrolment is four candidates annually, with a maximum annual intake of eight candidates, provided resources are in place. As noted in Section "c" of this report, the target candidate profile is reasonable.

There is a demand for doctoral education in Manitoba, Canada and internationally. In the early years of this program, it would be realistic to assume that candidates will be drawn from the Winnipeg area, Manitoba, the Prairies generally, and then elsewhere in Canada and internationally. It is probable that the program will appeal to graduate students enrolled in the Faculty's Master's programs, and those who wish to explore theory and advanced research methods. Once the program is firmly established and its qualities known, one might expect the program to attract a high number of candidates from locations outside the Manitoba regional catchment area.

Quality control will be maintained by adherence to the Faculty of Graduate Studies' admissions requirements. The Faculty of Architecture's supplementary candidate selection criteria discussed in Section "c" should be sufficient to ensure a high quality of applicants.

e. The curriculum is appropriate

The proposed curriculum is comprehensive and appropriate for a doctoral degree in Planning or Design. Courses will be drawn from Faculty of Architecture offerings, as well as courses offered by other Faculties at the University of Manitoba and the University of Winnipeg.

The concept of specializations is appropriate as proposed. It could be argued that doctoral candidates should be free to choose their area of research, unencumbered by specialization criteria. However, specializations offer the benefits of reflecting Faculty research strengths, communicate the program's "niche" in doctoral research, and help ensure that candidates receive a comprehensive, sound education.

The program achieves a reasonable balance between structured learning and individual research program development. The progression of courses and program benchmarks, such as the comprehensive methods paper, comprehensive design theory project or comprehensive planning theory project will adequately prepare candidates for the comprehensive examination.

Proposed Ph.D. (Planning and Design)

The program would be strengthened if all candidates were required to complete advanced courses in qualitative as well as quantitative research methods. Further, these courses should be completed in Year One of the program, thereby providing a sound methodological foundation for subsequent coursework and research in the candidate's area of specialization.

Finally, the Faculty should reconsider the length of the program. If candidates arrive with a master's degree in planning or design, it should be possible to complete coursework and prepare for the comprehensive examination within 24 months. Year One could provide the conceptual and methodological foundation, and Year Two could provide the necessary background in research specialization. The comprehensive examination stage should be complete by the end of the Fall term in Year Three.

f. Program resources are adequate, but could be enhanced

The addition of up to eight doctoral students annually should not strain existing resources. The field visit included tours of the Architecture buildings, including studio space, the Library, computer labs and classrooms. The Faculty's main building - the Russell Building - is undergoing renovations, the result of which will be a modernized, efficient structure. This will address the existing crowded conditions.

Existing building uses will be reviewed once renovations are complete and the new structure (CMAD) is built. It is proposed that doctoral candidates will have dedicated office space adjacent to third floor studios in the Russell Building. Depending on research interests, doctoral candidates will have access to the CAST and proposed CMAD buildings. The Library holdings seem adequate, with deficiencies in holdings easily addressed by a modest increase in financial resources. Information technology on-site should be adequate to meet doctoral candidate needs.

g. Strengths and weaknesses

On balance, the proposal is reasonable and makes a strong case for the new doctoral program in Planning and Design. These points are noted for consideration:

- the Faculty's research reputation could be better known. This reflects the Faculty's continuing migration towards a balanced research/teaching culture. The research output increases that are anticipated will address this challenge
- there is a need to market the Faculty of Architecture and the University of Manitoba generally should the goal be to attract top-ranked candidates (and scholars)
- lack of funding for graduate students is a major issue, probably campus-wide. This may hinder the competitiveness of the proposed program, since other doctoral programs offer fairly generous financial support. For example, the University of Waterloo's Ph.D. (Planning) guarantees doctoral candidates five terms of Teaching Assistant funding at \$6100 per term.

h. Modifications

Curriculum

As noted in Section "e", the Faculty should consider restructuring the curriculum to ensure that qualitative and quantitative research methods courses are mandatory. Further, these courses should be completed in Year One. Finally, the Faculty should reconsider the merits of three years of courses. It should be possible to complete the pre-comprehensive examination coursework in 24 months of full-time study.

Degree Name

The proposed degree name is awkward and does not reflect the variety of research interests in the Faculty. The very impressive critical mass of disciplines and interdisciplinary research potential suggests that this Faculty excels in "Environmental Design." The degree should be: Ph.D. (Environmental Design).

Faculty Name

The Faculty of Architecture name should be reconsidered. The name suggests that this is primarily a Faculty of Architecture, implying that other disciplines are of secondary importance. It is assumed that this is not the case in practice. However, symbolism is important when marketing and "branding" an institution and its products. Accordingly, a more complete Faculty name would be "Environmental Design", reflecting the Faculty's commitment to interdisciplinary research and education in both built and natural environments.

i. Summary and conclusions

The proposal has merit and should be approved, with revisions

- faculty and students are supportive of this initiative, and respect the vision and leadership demonstrated by the Dean
- the strategy is consistent with the University of Manitoba's long-range planning, priorities, themes, strategies (e.g. excellence, research, special issues/needs)
- this is perceived as an excellent opportunity for the Faculty to reach the next level, enhance reputation, complement solid teaching/education/training tradition and expertise
- a market exists for an advanced degree in design – very few similar programs exist nationally or internationally to meet increasing demand for "design" faculty

The Faculty of Architecture is positioned to deliver this program

- the Faculty's culture is shifting to research/education/practice; keeping step with individual disciplinary demands/standards, and University expectations
- existing faculty have the capacity to deliver the proposed degree program
- the Faculty needs the Ph.D. program to attract top-ranked faculty, students, resources, and to help meet the University's vision re: an internationally-recognized research institution

Some issues of faculty resources require attention

- the pursuit of excellence requires resources – money, faculty, space, holdings, etc. This could be addressed by the Faculty, the University and the community of stakeholders with an interest in planning and design
 - an incremental approach to program development is sensible in the circumstances. An acceptable, strong program could be delivered with existing resources.
 - however, the University needs to acknowledge that this program's potential (excellence) could be realized over a shorter period with more resources. It would be useful if the proponent could set out the optimal scenario regarding resource requirements for the proposed program
-

References

Faculty of Architecture. (2004a). Proposal for Ph.D. (in Design and Planning). April 23, 2004. Dean's Office

Faculty of Architecture. (2004b). Final draft: vision/mission/tenets. November 5, 2004. Faculty Council Mandated Committee

University of Manitoba. (n.d.). External Reviewer's Report guidelines. Office of the Associate Dean, Faculty of Graduate Studies.

University of Manitoba. (2002). Building for a bright future. A strategic academic plan for the University of Manitoba. Office of the President

University of Manitoba. (2004a). Faculties, schools and departments. Retrieved from the World Wide Web on November 10, 2004: <http://www.umanitoba.ca/faculties/>

University of Manitoba. (2004b): Admissions handbook 2005. Enrolment services (student recruitment)

University of Manitoba. (2004c). 2004-2005 Graduate Calendar. Faculty of Graduate Studies

Proposed Ph.D. (Planning and Design)

APPENDIX A – Interviewees (November 9 and 10, 2004)

Professor Karen Wilson Baptist (Landscape Architecture)

Dr. Sheri Blake (City Planning)

Dr. Rae Bridgman (Assoc. Dean, Research, Faculty of Architecture)

Professor Lynn Chalmers (Chair, Interior Design)

Ms. Jayne Giesel (President, Landscape Architecture Students Association)

Mr. Evan Hanson (President, U. of M. Association of Architecture Students)

Dr. Pam Hawranik (Assoc. Dean, Graduate Studies)

Ms. Meagan Henke (President, U. of M. Association of Planning Students)

Dr. Richard Lobdell (Vice-Provost, Programs)

Ms. Mary Lochhead (Head Librarian, Faculty of Architecture)

Professor Ian Macdonald (Chair, Architecture)

Mr. David Palubeski, MCIP (Lombard North Group and Former President, Canadian Institute of Planners)

Professor Alan Tate (Chair, Landscape Architecture)

Professor Charlie Thomsen (Associate Dean, Undergraduate, Faculty of Architecture)

Dr. Ian Wight (Chair, City Planning)

Dr. David Witty (Dean, Faculty of Architecture)

November 14, 2004

Faculty of Architecture – University of Manitoba

External Review of Proposed PhD Program

Professor Brian R. Sinclair, Dean
Faculty of Environmental Design
University of Calgary, Alberta

Preamble

In late Spring 2004 an invitation was extended, from Graduate Studies, for my external review & assessment of the proposed PhD program in the Faculty of Architecture at the University of Manitoba. The review was intended to garner comments, criticisms and insights regarding the proposed program.

In the Summer 2004 I received a hard copy of the written submission entitled “Faculty of Architecture PhD Program Proposal: April 2004”. Faculty cv’s were not included in the documentation I received, although I was provided access to same at the time of the site visit. Accreditation reports, relative to the constituent professions in the Faculty of Architecture (namely Architecture, Landscape Architecture, Planning and Interior Design¹), were not included in the package. During the site visit I was provided an opportunity to review the Architecture Program accreditation Canadian Architectural Certification Board (CACB) report².

In September 2004 (Monday September 27th and Tuesday September 28th), a site visit was conducted in an effort to secure deeper understanding of the Faculty of Architecture and the

¹ It is advisable for the Faculty of Architecture to consider the possibility of changing the nomenclature to Interior Architecture. As it now stands, and as was expressed by some interviewees during the site visit, the nomenclature Interior Design has some negative associations. In an effort to promote equity between departments and disciplines in the Faculty of Architecture, such a shift in nomenclature may prove beneficial and significant.

² Ideally it would have been beneficial to review accreditation reports for all the professional programs: Architecture, Landscape Architecture, Planning, and Interior Design.

University of Manitoba as pertains the aforesaid PhD Program proposal. The site visit was well-considered and well-organized, providing me with the opportunity to interact with the following individuals and groups: Dean of the Faculty of Architecture; Associate Dean, Graduate Studies; Faculty of Architecture Department Heads; Vice-Provost (Programs); Head Librarian, Architecture Library; Faculty of Architecture Curriculum Committee; Faculty of Architecture Associate Deans; and a selection of student leaders and representatives from the Faculty of Architecture. While not included in the agenda, it would have been useful to have met with Deans of Education, Engineering, and Environment, as well as with executive members of the various professional organizations³ relating to the Faculty of Architecture.

Review & Assessment Guidelines

I was asked to assess academic merit of the graduate program proposal. This assessment was to be guided by the following headings, although not restricted to them. I was charged to articulate clear recommendations and/or priorities of choice where appropriate to do so.

- Comparisons with related program(s).
- Breadth and depth of curriculum.
- Demand for graduates with the proposed credential.
- Excellence of the faculty and breadth of expertise.
- Adequacy of facilities, space and other resources.
- Strengths and weaknesses of the program proposal.

1. Comparisons with related program(s)

The proposed PhD Program in the Faculty of Architecture is unique in Canada as regards the particular array of disciplines represented, namely Architecture, Planning, Landscape

³ While I did not meet with representatives of the various professional organizations, it is clear that these organizations must be connected to, involved in, and beneficiaries of, a new PhD program in the Faculty of Architecture. Dean David Witry has an excellent working relationship with the professions and will, undoubtedly, ensure that said relationships are in place and symbiotic as pertains the new PhD program.

Architecture and Interior Design. Programs that are closest in Canada are the University of Calgary, the University of Waterloo, and McGill University. The PhD program in Calgary⁴, located in the Faculty of Environmental Design (EVDS) has the constituent disciplines of Architecture, Industrial Design, Environmental Design, Environmental Science, Planning, and Urban Design. This particular program has enrollment in the range of 18-20 students. Waterloo's disciplinary mix includes Architecture, Planning and Environmental Studies, while McGill's composition includes both Architecture and Planning.

There are only 10 accredited schools of Architecture in Canada. There are a significant number of planning and interior design programs, and to an even lesser extent schools of landscape architecture. Given the limited number of 'design and planning' faculties in Canada, and the strong need for graduates from the various disciplinary and interdisciplinary programs therein, it seems entirely reasonable for the University of Manitoba's Faculty of Architecture to be pursuing a new PhD program. This is especially the case given the small size and niche marketing of the proposed PhD program.

2. Breadth and depth of curriculum

The breadth of the curriculum is clear and attractive, especially considering the involvement of the three allied faculties of Education, Engineering and Environment. The initial package I received for review did not contain the support letters from these faculties. However, I was provided with copies by Graduate Studies upon arrival to the University of Manitoba for the site visit. While the support letters were generally positive, a number of flags were raised by respective deans. Education expressed a concern about courses not being available. Engineering expressed some concern about pre-requisites and students' ability to be able to undertake study as proposed without an adequate grounding. It would have been helpful to have met with the Deans of Education, Engineering, and Environment, as part of the review

⁴ In the Faculty of Architecture proposal there are several inaccuracies with regard to depiction of the University of Calgary's PhD program. Most importantly, the program does not have a focus on land use and the natural environment, although these dimensions are certainly covered. The report notes that "There are no Canadian universities offering a doctorate in design." The doctorate program in the Faculty of Environmental Design (EVDS) at the University of Calgary does include design as a fundamental aspect and option for advanced study.

process. This concern notwithstanding, it does appear as though the Faculty of Architecture enjoys the support of these allied faculties (and deans) as pertains a new PhD program. In terms of depth of curriculum, it is somewhat hard to assess success in this regard. While the proposed structure for the new PhD program identifies TWO streams, namely DESIGN and PLANING, the rationale and viability of this strategy can be argued. In a very small program, such streaming may prove limiting and may be disadvantageous. Under these two streams there are 5 specialization areas, namely: BUILDING STRUCTURES, DESIGN AND PLANNING EDUCATION, DESIGN AND PLANNING PRACTICE, DESIGN AND PLANNING THEORY, and SUSTAINABLE DESIGN AND PLANNING. It is noted in the proposal that students MUST declare a stream and MUST declare a specialization in one of these 5 areas. If the Faculty of Architecture is intent on pursuing such specialization, it would be helpful to include model curricula (or sample programs of study) within the proposal. The Faculty of Architecture should, as a collective, firmly agree on the relative emphasis on the general versus the specific, and on interdisciplinarity versus disciplinarity. While undoubtedly both dimensions are invoked, the program would benefit through clarity of prioritization⁵.

While some specializations are very general (e.g., Design and Planning Theory), others are quite particular (e.g., Building Structures). Given this dichotomy, the smallness of the program, and the need to attract strong students, the wisdom of the strategy can be challenged. In discussions during the site visit, some interviewees were unsure of whether the focus of the PhD program is (or should be) on 'interdisciplinarity breadth' or 'disciplinary depth'. Some interviewees referred to a desperate need to build the knowledge bases of the specific design & planning disciplines. In this line of reasoning, PhD students would be recruited to investigate very focused and disciplinary-specific research. PhD candidates, while having the opportunity to take courses outside their discipline and outside

⁵ Interviewees, including faculty member and student representatives, indicated that the Department structure was proving an impediment to interdisciplinary work. Students noted that there was a class structure in place that was supported through departmentalization. Faculty members noted that the departmental structure was required due to accreditation regimes in place. On the last point, departmentalization is not a requirement of accreditation in the professional disciplines. The only requirement that might be related to departmentalization is a demand for autonomy in certain dimensions (curriculum as one example). In fact, there are numerous examples in North America of non-departmentalized schools where professional programs, including architecture and allied fields, have flourished under strict accreditation systems. The Faculty of Architecture is encouraged to consider such matters, opportunities, and potential for differing organizational structures.

the Faculty of Architecture, would have a primary emphasis within their home discipline. Other interviewees argued that such specificity would be restrictive, and that students applying for the program should be obliged to demonstrate strong connections between disciplines.

3. Demand for graduates with the proposed credential.

Given the growing complexity of contemporary problems, the escalating amount of information being generated and being processed, and the increasing need for holistic and 'design' approaches to intervention, graduates from doctorate programs in design & planning faculties can be expected to remain in demand. Traditional destinations within the academy should remain a clear option for graduates, especially considering the move at research intensive universities to raise the bar in terms of credentials.⁶

With growing regularity, PhD graduates are finding roles and places within government bureaucracies and within private sectors firms and consultancies. For example, graduates from the PhD program in Environmental Design at the University of Calgary have assumed positions with the federal government, with leading non-governmental organizations, and with international consulting firms (most notably active in areas of sustainable development).

4. Excellence of the faculty and breadth of expertise

In reviewing the curriculum vitae of the members in the Faculty of Architecture, it is clear that there is breadth and excellence. Faculty seem strong and dedicated, many having secured good reputations, garnered significant accolades and realized high performance. In

⁶ Many design schools, with a clear historical focus on professional practice, have tended to hire professors with post-professional masters degrees. As university administrations have turned attention to greater success and accomplishment in areas of funded research, peer-reviewed scholarship, heightened rigor and tighter metrics for assessment, design schools are scrambling to respond. With increasing regularity, position descriptions and job advertisements call for a PhD as a required or at least preferred credential. It should be noted that in the Faculty of Architecture at the University of Manitoba this shift is underway and apparent. While the various departments are all cognizant of the need to 'raise the research bar', success in moving towards more faculty with doctorates is varied. For example, all members of the Planning Department hold PhDs, while in the Architecture Department none hold the credential. As the Faculty of Architecture moves towards the mounting of the new PhD program, this staffing imbalance by department will need to be firmly and successfully addressed. All departments must be committed, supportive and contributing.

light of the move towards a new PhD program, and heightened emphasis on top drawer scholarship, the Faculty of Architecture should promote more success with traditional funded research. The Faculty of Architecture appears to have met limited success at securing grants from such agencies as NSERC and SSHRC⁷. Some interviewees questioned whether the Faculty should demonstrate a track record of success at funded research prior to embarking on a new PhD program. Other interviewees stressed that a new PhD program will serve as an incentive and catalyst for renewed commitment to funded research and high-end scholarship across the faculty ranks. Clearly this is a 'chicken and egg' or 'catch 22' phenomenon. Regardless of one's position in the argument, a PhD program in the Faculty of Architecture is timely, will be vital, and should be realized.

In order to better understand faculty expertise with regard to the proposed PhD program, it would be useful to construct a matrix. The matrix could include on one axis the specialization areas proposed for the PhD (as proposed, namely building structures, design and planning education, design and planning practice, design and planning theory, and sustainable design and planning) and on the other axis a list of ALL faculty members. Completing such a matrix would prove highly informative and complementary as regards the current review and assessment. It is very hard to ascertain the 'fit' and 'capacity' of the Faculty of Architecture with regard to the proposed PhD specialization areas. A number of the interviewees questioned the need for 'spelling out' such areas of specialization, challenged the Faculty's ability to service all of these specializations, and worried that delineating such specialties would prove limiting in recruitment and admissions processes. Many interviewees suggested having no streams and no specializations. Given the small size of the new program, and the goal of recruiting exceptional candidates, interviewees saw the wisdom in keeping the program open and without strong concentration areas.

⁷ The University of Manitoba should examine and implement vehicles to promote greater application and success rates, in the Faculty of Architecture, with regard to Canadian tri-council funding sources. For example, direct support for grant-writing and the provision of assistance for grantsmanship workshops, should be advanced. If not already in place, a strategic plan for research should be developed by the Faculty of Architecture (in concert and complementary to a broader UM research plan). The university should also provide the Faculty of Architecture with additional resources to ensure faculty development, conference participation, and seed granting (startup and continuing), to accelerate the Faculty of Architecture's fuller success in the research arena (intra-institutionally, inter-institutionally, regionally, nationally and internationally).

Faculty suggested having maximum flexibility and openness in a new PhD program for other reasons as well. They explained as teachers that they tend to be overworked, questioning their capacity for doctoral candidate supervision if student numbers were too high. They explained that they had inadequate time for their own scholarship, grant-writing, professional development, and interdisciplinary activity. Some interviewees suggested that the only way they could/would participate in a new PhD program was if they were provided release time from teaching.⁸

5. Adequacy of facilities, space and other resources

Facilities in the Faculty of Architecture seem adequate and in many instances very appropriate as pertains the proposed PhD program. While the Faculty has proposed space provision for administrators and students within the new program, serious consideration should be given to fostering and ensuring integration. It makes sense to have PhD students interacting meaningfully with other graduate as well as undergraduate students. It is assumed that PhD students will be involved with undergraduate teaching.⁹ Faculty and students alike, during the site visit, expressed concerns about walls between disciplines and departments. PhD students should be placed among other graduate students rather than grouped together in an isolated and confined space. While the PhD students will need some dedicated research and seminar spaces, every effort should be made to have them visible and engaged in the community of scholars in the Faculty of Architecture.

Resource implications of the new PhD program seem minimal and should generally be addressable by the Faculty of Architecture. Some interviewees expressed concern that two new tenure-track positions (one in Planning and one in Architecture), targeted at the new PhD program, will prove to be insufficient. There was concern expressed about the relative imbalance of faculty members with PhDs by Department. How will Architecture be able to

⁸ With respect to faculty concerns about workloads, I suggest the Faculty of Architecture undertake study of workloads within similar design & planning schools within North America, as well as within the Faculties at the University of Manitoba. Many of the claims of unreasonable workloads within the Faculty of Architecture were anecdotal – it seems necessary to test the claims against the facts.

⁹ PhD student teaching assignments will benefit the Faculty of Architecture in many ways, including from a resource perspective. Teaching experience will, of course, prove an important aspect of student education within the new doctorate program.

fairly contribute given that, at present, no faculty members have doctorate degrees? Will departments such as Planning, where all faculty members have PhDs, be left carrying the ball? In the end, it would seem that this inequity must be addressed (although it is unlikely much headway can be realized in the short term) – if faculty are fully aware of the challenges in this regard, and are fully supportive despite current challenges, the PhD program has a greater chance for building strength, warranting viability, and achieving success.

6. Strengths and weaknesses of the new PhD program proposal

Strengths:

- Interdisciplinarity – making connections and increasing richness.
- Size – very small at the beginning, with minimal resource implications.
- Increased research presence and enhanced scholarly profile.
- A new PhD program would contribute to the Faculty of Architecture's reputation (internal and external to campus) with regard to top-drawer scholarship, funded inquiry, and fit within a research intensive university.
- Widespread support for new program, which is seen as vital to and logical in the evolution of the Faculty of Architecture as a leading design and planning school.
- Strong outreach opportunities, including cooperation with allied faculties of Education, Engineering, and Environment.

Weaknesses:

- Imbalance of PhD credentials within Faculty of Architecture (broad spectrum, from the Planning Department at 100% to the Architecture Department at 0%).
- Interdisciplinarity – seen as watering down disciplines, failing to build disciplinary knowledge bases, and lessening chance of securing external funding for research.
- Design and Planning streams seen as limiting, restrictive and potentially amplifying the existing class structure.

- Unsure if research record in Faculty of Architecture should be stronger prior to mounting PhD, or if mounting new PhD program will prove the vehicle to build that research record.
- There are some internal concerns that the new PhD program has advanced as primarily the Dean's initiative, with insufficient dialogue and buy-in at the faculty level.
- Perceived internal lack of clarity on Faculty of Architecture priorities (e.g., new graduate program in Product Design, new PhD program, etc.).

Summary

It is clear that the Faculty of Architecture's proposed new PhD program is needed and welcomed. The proposed program enjoys strong support at all levels – its successful development and realization should be ensured by the University of Manitoba. It is also clear that Dr. David Witty, Dean of the Faculty of Architecture, has worked hard to raise the profile of the school, to heighten research + scholarly activity, and to build support for the new PhD program. The Faculty of Architecture has prepared a thorough and commendable proposal for the new PhD program, including effectively communicating the desire and demonstrating the need for such a program (e.g., to the institution's central administration).

The broader objectives of the PhD program are clear, and are clearly supportable. There are some concerns about the naming of the program, including the formation of the two streams of Design and Planning. In such a small program (i.e., initial intake of 4 students), such categorization seems counter-intuitive and unnecessarily restrictive. Would an admissions committee aim to seek balance in the streams (e.g., 2 students per stream)? Would an imbalance be acceptable? What if all students applied only to the Design or to the Planning stream? It is my recommendation that, at least initially, there be no distinction by stream.

Using a similar logic, it may prove limiting to require students to declare into one of five stated specialization areas. In the absence of clear reasons, it is hard to understand why the

five specific areas are identified. Some areas are wide-sweeping while others are narrow. In some areas, such as building structures, there are no faculty currently holding PhDs.

My recommendation is to mount the PhD program in the Faculty of Architecture without focusing on streams and specializations. Rather, the program should be open, flexible and adaptable. Every effort should be made to attract the very best students, with an objective of matching student interest with faculty expertise. Students should be required, as a part of their application process, to identify a specific faculty member whom they wish to oversee and supervise the PhD research. Applicants should also be required to identify/assure sources of research funding.¹⁰

Through an open call for students into a more flexible PhD Program, the Faculty of Architecture should be able to address several key issues. They should be in a position to attract and admit very strong students who will meet with success in terms of research quality and degree completion. In reviewing and assessing candidates, the Faculty of Architecture will be able to admit top students who can play to faculty strengths. Decision making, in terms of admissions, can also respect faculty loading and availability for supervision.

The question of niche is important. I stated earlier that the Faculty of Architecture's proposal for a new PhD program identifies uniqueness and niche as important. It is argued that neither the 2-identified streams nor the 5 specialization areas provide such a niche. In discussions with interviewees it seems the best niche for the Faculty of Architecture's new PhD program is 'Design'. It is the design dimension that sets the Faculty of Architecture apart from other faculties at the University of Manitoba – the history of the faculty is one distinguished through commitment to and excellence in design. Even planning, as acknowledged by faculty members and students, gains identity nationally through its positioning in a design-oriented school. Physical and 3D design aspects loom large,

¹⁰ It is common at many institutions/schools, to have students and supervisors guaranteed sources and amounts of research funding. When this issue was raised with interviewees in the site visit process, there was widespread concern that faculty would not be able to guarantee research support for incoming PhD students. This fact underscores the need for the University of Manitoba to work with the Faculty of Architecture to heighten success in attracting external support of research and scholarship.

supported but not overshadowed by policy matters. On the question of niche, it would be helpful to have a broad Faculty of Architecture conversation on 'competitive edge'. It is hard to imagine that the Faculty of Architecture can claim international leadership in all 5 declared areas of specialization. As noted previously, it seems uncertain that these 5 areas are even the most appropriate or germane. Perhaps it is DESIGN that places the Faculty of Architecture at the leading edge. Or perhaps the niche arrives via the particular MIX OF DISCIPLINES. Or perhaps it is an URBAN emphasis. Or it might be an ECOLOGICALLY-SENSITIVE approach that defines prominence. Under an overarching theme or umbrella there can be plenty of room for a range of applicants and research proposals with regard to a new PhD program.

In conclusion, I strongly recommend that the University of Manitoba fully support the Faculty of Architecture in their request to develop and mount a new PhD program. As Dean of the Faculty of Environmental Design (EVDS) at the University of Calgary, I have a strong awareness of design and planning education nationally and internationally. In the Faculty of Environmental Design we currently have a doctorate program with approximately 18-20 students. This program is strong with its graduates well regarded. It is my position that there is an opportunity and need nationally for more doctorate programs in the design and planning fields. The Faculty of Architecture at the University of Manitoba has an excellent reputation that a new PhD program can build upon. While the proposed PhD program is small, it holds promise to strengthen research and scholarship in the school and to develop the knowledge bases within the disciplines. At this point it would make sense to mount the new PhD program with significant flexibility and openness, with an intention to sharpen the focus as experience and developments warrant. Key to this strategy would be to attract exceptionally strong students who can be paired with key faculty who are proven researchers and who are willing to see candidates successfully through the program. While the new PhD program can be realized largely with available (and committed) resources, it would be in the interests of the University of Manitoba to more fully support the Faculty of Architecture as it implements the program. In a more general sense, external research funding and top-tier scholarship must be promoted and increased within the Faculty of Architecture. To achieve such ends, the Faculty of Architecture and the University of Manitoba must work closely together. Funding for incoming PhD students should be

seriously addressed. To ensure PhD student success, to further the reputation of the school, and to promote excellence in research and inquiry, proper resourcing (including research grants, teaching + research assistantships, conference travel support, equipment, etc.) is vital.



UNIVERSITY
OF MANITOBA

Faculty of Architecture

September 4, 2003

Architecture
City Planning
Environmental Design
Interior Design
Landscape Architecture

Office of the Dean
Winnipeg, Manitoba
Canada R3T 2N2
Telephone (204) 474-9558
Fax (204) 474-7532

TO: Dr. John Wiens, Dean, Faculty of Education
Dr. Doug Ruth, Dean, Faculty of Engineering
Dr. Robert O'Kell, Dean, Faculty of Arts
Dr. Leslie King, Dean, Faculty of Environment

FROM: David R. Witty, Ph.D., MRAIC, FCIP
Dean, Faculty of Architecture

SUBJECT: Ph.D. Proposal

As you may know, the Faculty of Architecture is developing a proposal to offer a Ph.D. in September 2005. The Faculty has prepared the attached draft for your review and comment. Please note that our interdisciplinary focus requires a broad collaboration with other Faculties. Section 3: Specifics b. Course Requirements identifies specific course offerings in your Faculty that we have identified as possible existing courses that we would like to list under the condition of "with permission of instructor."

Please review the attached and let me know your thoughts. Thank you.

DRW:imp

cc: Dr. Robert Kerr, Vice-President (Academic) and Provost
Dr. Emdad Haque, Director, Natural Resources Institute

File:plid.memo



UNIVERSITY
OF MANITOBA

Faculty of Arts

SEP 23 2003

OFFICE OF THE DEAN

Dean of Arts
310 Fletcher Argue Building
University of Manitoba
Winnipeg, Manitoba
Canada R3T 5V5
Telephone (204) 474-9271
Facsimile (204) 474-7590
Email robert_okell@umanitoba.ca

DATE: September 19, 2003

TO: David Witty, Dean, Faculty of Architecture *WD*

FROM: Robert P. O'Kell, Dean, Faculty of Arts *OK*

SUBJECT: Proposed PhD Program in Architecture

Thank you for your memo of September 4, 2003 inviting feedback on your proposed PhD program.

The Faculty of Arts certainly has no objection to your proposed program. However, we note that the proposal calls for a number of courses in the Faculty of Arts to be used in the program. Although the text indicates that "other Faculties, most notably Arts..." will deliver courses, the examples you provide in the documentation of your program do not include any Arts courses. Before providing a categorical endorsement of your program, we would like to be clear about what courses in Arts might be included in it.

Thank you for your consideration and good luck with your proposal.

O'K/ld

c: David Stewart, Associate Dean, Faculty of Arts
Robert Kerr, Vice-President (Academic) & Provost
Emdad Haque, Director, Natural Resources Institute



UNIVERSITY | Faculty of Engineering
OF MANITOBA | *Office of the Dean*

349 Engineering Building
Winnipeg, Manitoba
Canada R3T 5V6
Telephone (204) 474-9806/7
Fax (204) 275-3773

27 November 2003

Dr. D. Witry, Dean
Faculty of Architecture
201 Russell Building

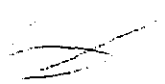
Dear Dr. Witry:

As you know, I referred your proposal to establish a PhD program in the Faculty of Architecture to Jay Doering, Head of Civil Engineering. Based on his feedback and my own reading of the proposal, I make the following comments:

- The engineering courses that you have identified are very appropriate for the proposed program. I caution however that these courses would require significant pre-requisites and would not be appropriate for all candidates.
- The Faculty of Engineering would be very supportive of participation in this program. We believe that it would fit very well with our (slowly) developing joint Civil Engineering/Architecture program, providing a logical continuation of this program.
- As a suggestion, I believe that a name such as Ph.D. in Architectural Sciences would fit well with some of the course material. Or perhaps a Ph.D. in Architectural Studies might fit in a more general sense.

I wish you the best in this initiative and welcome an opportunity to participate.

Sincerely,


Douglas Ruth, P.Eng., Ph.D.
Professor and Dean

DR/jk

Copy: Dr. J. Doering, Head, Civil Engineering

LIBRARY SUPPORT FOR PROPOSED COURSE CHANGES

(The signatures appended indicate that those signing support the statement made by the bibliographer whose comments are attached. They do not necessarily indicate that the library has the resources to support the course change as outlined in the departmental submission)

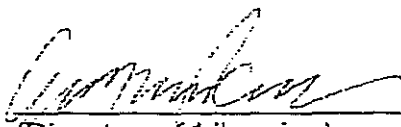
NAME OF PROGRAM

Faculty: Architecture
Department:
Course no. and name: Ph.D. in Design and Planning

SUPPORT STATEMENT

PREPARED BY: Mary Lochhead (Bibliographer)

APPROVED BY: John C. Horner (signature)
(Coordinator, Collections Management)

 (signature)
(Director of Libraries)

DATE:

November 27, 2003



Russell Building
84 Curry Place
Winnipeg, Manitoba
Canada R3T 2N2
Telephone (204) 474-9216
Fax (204) 474-7530

Architecture / Fine Arts Library

November 25, 2003

To: David Witty, Dean, Faculty of Architecture

From: Mary Lochhead, Head, Architecture/Fine Arts and Music Library

Re: Proposed PhD in Design and Planning

Please find attached my assessment of our collection in terms of supporting the proposed PhD in Design and Planning. The University of Manitoba Libraries can support this program. The resources, particularly those in the Architecture/Fine Arts Library, are strong in all areas - architecture, city planning, interior design and landscape architecture. The collections in other unit libraries such as the E. Dafoe Library, the Sciences and Technology Library, and the Management Library are also strong in the areas related to this proposal. The growing collection of electronic material will also be a critical resource for students and faculty in this program.

Faculty members identified a number of journals which would enhance our current holdings. One time costs to acquire selected back issues would be \$2398.00C and ongoing subscriptions costs would be \$1020.00C (with expected increases due to inflation each year). External funding is required to support the acquisition of the back issues and the annual subscription costs.

cc. C. Presser, Director of Libraries
J. Horner, Coordinator, Collections

A. Introduction

The Faculty of Architecture proposes to introduce a PhD program in Design and Planning with the following stated objectives:

- to support advanced research and study in the Design and Planning disciplines;
- to promote advanced research of the built and natural environments
- to complement the interdisciplinary structure of the Faculty; and
- to support the Faculty in its quest to be a world class Design and Planning institution.

The areas of focus identified in the program description are:

- building structures
- design education
- design practice
- design theory
- sustainable design

B. Collection Development

The University of Manitoba Libraries already supports well-established graduate programs in Architecture, City Planning, Interior Design and Landscape Architecture, primarily through the Architecture/Fine Arts Library collection but also through related collections in the E. Dafoe Library (e.g. psychology, sociology, geography, natural resources), the Sciences and Technology Library (e.g. engineering, ecology, botany), the Management Library (e.g. professional practice), and the Law Library (e.g. zoning, legal aspects). PhD programs are offered in related disciplines (e.g. Engineering, Arts) and are supported by the Libraries.

Monographs

The current annual allocation for the purchase of firm order books for the Architecture/Fine Arts Library in support of the design and planning disciplines is \$26,141.00. At an average price of \$64.00 per title, this allows for the purchase of 408 books per year. An additional amount of approximately \$4500.00 is spent on City Planning books through the Libraries approval plan with Blackwells North America. The books acquired to support the School of Art programs in art history and studio art are of relevance to students and faculty in the Faculty of Architecture as well. With an annual budget of \$22,200.00, approximately 346 titles are acquired each year through firm orders and approval plans.

Gift funds are also used to support acquisitions for the design and planning disciplines. An annual donation of \$500.00 from the Manitoba Association of Architects is specifically targeted at resources to support graduate level research. A \$10,000.00 donation, received in the mid-1990s and now almost entirely expended, was also targeted at resources to support the design and planning programs. With this donation we acquired important reference sources and back volumes of journals in addition to resources which strengthened all areas of the design and planning collection.

It is significant to note, in response to the results of the bibliographic checking and assessments levels indicated below, that some of the sources checked have an American bias and do not reflect the diversity which is supported by our collection. The library has actively collected materials to support international studios sponsored by the Faculty in places such as Korea,

Berlin, Italy and Latin America and to reflect the Faculty's emphasis on modern design (e.g. Germany, the Netherlands). The library also collects material related to Canadian art and design, almost none of which is reflected in bibliographies of American publication.

Journals

The Architecture/Fine Arts Library has an annual budget for serial subscriptions of \$58,429.00. The journal collection is under constant scrutiny to ensure it meets research and study needs and to keep costs within our annual budget allocation. In addition to paid subscriptions, the library has generous support from many individuals and professional associations in the form of Adopt-a-Journal subscriptions. The Architecture/Fine Arts Library retains a strong core collection of journals in the fields of design and planning although it could be enhanced as per the comments below.

C. Collection Analysis

In order to determine support within the Libraries for study and teaching at the PhD level in design and planning, a systematic survey of literature in the four design and planning disciplines was undertaken. The Assessment Rating in the right-hand column, relates to the Libraries Collection Assessment Guidelines.

Items Held	Level	Description
30-49%	3a	Basic Instructional Support Level - basic undergraduate
50-64%	3b	Intermediate Instructional Support Level - upper undergraduate
65-79%	3c	Advanced Instructional Support Level - Master's level
80-94%	4	Research Level - doctoral and independent research

The results of this checking follow:

Design - General

Assessment Rating

"An annotated design research bibliography: by and for the design community." *Visible Language* 36 (2, Special Issue): 2002.

97 monographs listed - 67 held by the Libraries or 69%	3c
5 journals listed - 4 held by the Libraries or 80%	4

Julier, Guy. *The Culture of Design*. London: Sage, 2000.

265 monographs listed - 134 held by the Libraries or 51%	3b
86 journals listed - 39 held by the Libraries or 45%	3a

Zeisel, John. *Inquiry by design: tools for environment-behavior research*. Cambridge: University of Cambridge Press, 1981.

149 monographs listed - 120 held by the Libraries or 81%	4
33 journals listed - 27 held by the Libraries or 82%	4

Searches of the *Avery Index to Architectural Periodicals* identified the following:

design practice	398 articles listed	
	results limited by date 1990-2003 = 199	
	first 50 references checked	
	40 held by the Libraries or 80%	4
design - study and teaching	32 articles listed	

	24 held by the Libraries or 75%	3c
design - theory	101 articles listed	
	72 held by the Libraries or 71%	3c
professional practice	788 articles listed	
	results limited by date 1990-2003 = 43	
	31 held by the Libraries or 72%	3c
sustainable development	263 articles listed	
	192 held by the Libraries or 73%	3c

Architecture

Mitchell, W. *Logic of architecture*. Cambridge, Mass.: MIT, 1990

461 items listed - 364 held by the Libraries or 79% 4

Simmins, G. *Bibliography of Canadian Architecture*. Ottawa: Society for the Study of Architecture in Canada, 1992.

734 items listed - 502 held by the Libraries or 68% 3c

Sturgis, R. *Architecture Sourcebook*. N.Y.: VNR, 1984.

997 items listed - 616 held by the Libraries or 62% 3b

City Planning

Campbell, S. (ed.) *Readings in Planning Theory*. Detroit, MI: Omnigraphics, 1998.

397 items listed - 288 held by the Libraries or 73% 3c

Planning Journals, prepared for the *Journal of Planning Literature*

295 titles listed - 223 held by the Libraries or 76%. 3c

Interior Design

Lewis, S. *Interior Design Sourcebook*. Detroit, MI: Omnigraphics, 1998.

466 items listed - 319 held by the Libraries or 68% 3c

Baxter, P. "Thirty years of growth in the literature of interior design." *Journal of Design History* 4 (4), 1991: 241-250.

86 items listed - 64 held by the Libraries or 74% 3c

Landscape Architecture

Dramstad, W.E. *Landscape ecology: principles in landscape architecture and land-use planning*. Washington: Island Press, 1996.

75 items listed - 44 held by the Libraries or 59% 3b

Landscape Architecture Sourcebook. Detroit, MI: Omnigraphics, 1997.

876 items listed - 558 held by the Libraries or 64% 3b

Landscape Architecture Theory - course bibliography 2002

67 items listed - 58 held by the Libraries or 86% 4

The bibliographic checking undertaken for this proposal included citations to journal articles or lists of important titles in a particular field. Some of the references not held are due to cancellations carried out over the past 5-8 years or due to our subscriptions starting after the date of the citation checked. In the meantime, other titles have been identified by faculty which would enhance our collection. Total one time cost to acquire selected back issues- \$ 2398.00C . Total annual cost - \$1020.00C. Annual subscription costs will rise each year with inflation.

<i>arg: Architectural Research Quarterly</i> (2000-2003 = \$972.00C)	\$185.00us
<i>Architecture Today</i>	\$60.00us
<i>Canadian Housing</i> (1996-2003 = \$216.00C)	\$27.00 c
<i>Chinesc Architect</i>	\$119.00us
<i>Competitions</i>	\$28.00us
<i>Design Journal</i> (Ashgate) (2000-2003 ÷ \$898.00C)	120ps
<i>Gardens Illustrated</i> (2000-2003 = \$312.00C)	\$60.00us
<i>Garten Kunst</i>	\$70.00ca
<i>Historic Gardens Review</i>	\$45.00us

Cancellation of existing titles to release funds for these new subscriptions is not feasible as that would compromise our strong core collection. External funding would be required to support these new titles.

Of the titles cancelled in previous years the following are now available electronically as part of various package deals with electronic publishers.

Building and Environment
Growth and Change
Journal of Environmental Planning and Management
Regional Studies

Access to Journal Literature

The Libraries provides excellent access to journal literature through an array of indexes and full-text databases. The key databases in support of this program are listed below. Unless otherwise indicated all are available electronically via NetDOC.

<i>Agricola</i>	<i>Design and Applied Arts Index</i>
<i>America History and Life</i>	<i>EBSCOhost Full-Text</i>
<i>Architectural Publications Index</i> (cd-rom in Arch/FA Library)	<i>ENVillage</i>
<i>Art Index</i>	<i>ERIC</i>
<i>Arts and Humanities Index (Web of Science)</i>	<i>General Science Full Text</i>
<i>Avery Index to Architectural Periodicals</i>	<i>Geobase</i>
<i>Bibliography of Native North Americans</i>	<i>PAIS International</i>
<i>Biological Abstracts</i>	<i>Proquest Direct</i>
<i>Canadian Business and Current Affairs Full-Text</i>	<i>Science Citation Index (Web of Science)</i>
	<i>Science Direct</i>
	<i>Social Sciences Citation Index (Web of Science)</i>
	<i>WileyInterscience</i>

D. Other Resources

Data Library Services

In addition to the growing array of full-text electronic journals, the Libraries provides access to important research tools within its Data Library Services. They include NRC Canada Journals, Census Data and other government generated reports, and GIS resources (e.g. Land Information Navigator, ArcCanada, Manitoba Dept. of Conservation data and the Global GIS Database [on order]).

Additional Support

The Architecture/Fine Arts Library has been gifted the personal collection of Prof. Jeffrey Cook, a graduate of the Faculty and who, until his death in 2003, was a member of the Faculty of Architecture at Arizona State University. This collection of approximately 7,500 volumes including an impressive collection of rare architectural publications from the 18th and 19th centuries, will dramatically strengthen our collection in key areas of design, architectural history, planning and landscape. It is anticipated that these volumes will be catalogued and accessible in 2006.

Document Delivery

Materials which are not in the Libraries' collections can often be borrowed from other libraries through Document Delivery. The Libraries is committed to expediting document delivery services through the implementation of an electronic document delivery form located on the Libraries homepage and the implementation of Relais (an enhanced electronic document delivery management program).

In the fall of 2003 the Libraries and City Planning initiated a trial subscription to the ICURR (Intergovernmental Committee on Urban and Regional Research) Library. For an annual subscription of \$400.00 students have access to the government reports and special publications held in the ICURR Library via the Libraries Document Delivery service. The trial subscription is being supported by the Department of City Planning with the management of the service provided by the Libraries. We will assess the benefits of this subscription after one year.

Reciprocal Borrowing

Students enrolled in the PhD program but carrying out research in other locations will have access to the collections of other academic libraries in Canada through the COPPUL (Council of Prairie and Pacific University Libraries) reciprocal borrowing program.

[Faint, illegible text block]

Attachment 5: Financial



UNIVERSITY
OF MANITOBA

Faculty of Environment

204 Isbister Building
Winnipeg, Manitoba
Canada R3T 2N2
General Office (204) 474-7252
Fax (204) 275-3147

January 26, 2004

David Witty, PhD
Dean, Faculty of Architecture
201 Russell Building

JAN 30 2004

THE DEAN

Dear David

I am writing to express my enthusiastic support for the PhD program in Design and Planning in the Faculty of Architecture. The program appears to be very well designed and I believe will fill an important need at the University and will attract students from Canada and internationally. We support the inclusion of courses from the Faculty of Environment including those identified in the Natural Resources Institute and in the Department of Environment and Geography. We shall ensure that there will be seats in these courses for your students. As we have discussed, I shall be delighted to cooperate and collaborate with the Faculty of Architecture and I welcome the opportunity to work with you. Given our shared goals and interests, I speak also for Faculty Members, Staff, and students in the Faculty of Environment.

Yours Sincerely,

Leslie A. King
Leslie A. King, PhD
Dean, Faculty of Environment



UNIVERSITY
OF MANITOBA | Faculty of Education

Office of the Dean
225 Education Building
Winnipeg, Manitoba
Canada R3T 2N2
Telephone (204) 474-9001
Fax (204) 474-7551
dean_education@umanitoba.ca

February 5, 2004

Dr. David Witty
Dean
Faculty of Architecture
University of Manitoba
Winnipeg, MB R3T 2N2

Dear Dr. Witty:

The Faculty of Education is pleased to support the Faculty of Architecture's proposal to offer a Ph.D. program. The emphasis on a broad collaboration with other faculties will provide students with a significant opportunity to adopt an interdisciplinary approach in their studies.

The proposal identifies several courses that students might take in the Faculty of Education with permission from the instructor. While we encourage this, some of the proposed courses may not be offered on a regular basis due to student demand and the Faculty's resources to offer them. Among the courses that are not on our current rotation are:

-
- 129.707 The Analysis of Educational Organizations (3)
 - 129.708 Principles of Curriculum Organization and Implementation (3)
 - 129.720 Philosophy of Education (3)

While these courses are not on our regular rotation, we may offer them if we become aware that there is sufficient demand and resources. There may also be other advanced courses not listed in your proposal that might be suitable for your students. This, however, is a minor concern. The Faculty of Education welcomes the opportunity to support the development of this innovative program.

Wishing you continued success, I am,

Yours sincerely,

John R. Wiens, Ph.D.
Dean



UNIVERSITY
OF MANITOBA | Information Services
and Technology

Executive Director
Room 603A Engineering Building
Winnipeg, Manitoba
Canada R3T 2N2
Telephone (204) 474-9249
Fax (204) 474-7515

February 6, 2004

David Witty
Dean of Architecture
201 Russell Building
University of Manitoba

RE: PhD Proposal

Thank you for sending me the proposal to offer a PhD in 2005 in Design and Planning.

Based on the information in this proposal and expected enrollments, there will be no significant impact on IST resources resulting from the implementation of this program.

Thank you for bringing this to my attention.

Sincerely,

Gerry Miller
Executive Director
Information Services & Technology

Academic Computing & Networking
Engineering Building
Winnipeg, MB R3T 2N2

Administrative Systems
100 Administration Building
Winnipeg, MB R3T 2N2

Bannatyne Campus Services
206 Medical Services Building
Winnipeg, MB R3E 0W2

Central Administration Services
(Business, Telecommunications)
601 Engineering Building
Winnipeg, MB R3T 2N2

Educational Support Services
(Classroom Services)
223 Fletcher Avenue Building
Winnipeg, MB R3T 2N2

Educational Support Services
(Production & Imaging Services)
112 Ames Building
Winnipeg, MB R3T 2N2

(204) 474-9290
(204) 474-7515 FAX

(204) 474-9905
(204) 474-7502 FAX

(204) 789-3717
(204) 789-9519 FAX

(204) 474-9590
- 108 - 74-7515 FAX

(204) 474-8463
(204) 474-7598 FAX

(204) 474-8946
(204) 474-7625 FAX

From: Neil Marnoch <marnochn@Ms.UManitoba.CA>
Reply-To: marnochn@Ms.UManitoba.CA
Organization: University of Manitoba
To: <wittyd@cc.UManitoba.CA>
Date: Monday, March 1, 2004 10:26 AM
Subject: PhD Proposal

FAX



KEVIN SLIPPERT
GRAD STUDIES
DAVE WITTY
ARCHITECTURE

DATE: MAR 16/04



Dr. Witty, I've reviewed the proposal for a PhD in Architecture and see no problems in Student Records supporting this program.

I note that there is a good deal of potential for transfer of credit into this program and would like to remind you that transfer of credit, while reducing the coursework required in a program, does not reduce the program fees assessed.

I am confused by the math related to income projections in Attachment 3. If the assumption is two new students each year, with each student studying a minimum four years, I've calculated that over a four year period the total income from fees would be 65,522. The amount stated in the report is 33,283. Please see the attached spreadsheet showing my calculations.

Good luck with the proposal.
Neil

Neil Marnoch
Director, Student Records
400 University Centre
University of Manitoba
Winnipeg, MB R3T 2N2
Ph: 204-474-9425
Fax: 204-275-2589

----- Enclosure number 1 -----

- * This message contains the file 'PhD Arch Fees.xls', which has been
- * uuencoded. If you are using Pegasus Mail, then you can use
- * the browser's extract function to lift the original contents
- * out to a file, otherwise you will have to extract the message
- * and uudecode it manually.



UNIVERSITY
OF MANITOBA

Faculty of Architecture

January 10, 2005

Architecture
City Planning
Environmental Design
Interior Design
Landscape Architecture

Office of the Dean
Winnipeg, Manitoba
Canada R3T 2N2
Telephone (204) 474-9558
Fax (204) 474-7532

TO: Dr. Pamela Hawranik, Associate Dean (Programs and Planning)
Faculty of Graduate Studies

FROM: David R. Witty, Ph.D., MRAIC, FCIP
Dean, Faculty of Architecture *D. Witty*

SUBJECT: Faculty of Architecture Response to External Review of
Proposed Ph.D.

Further to your memo of November 16th, please find herein our response to the two external examination reports.

Since the examiners provided two separate reports because they attended the University and reviewed the documentation on two separate occasions, we have provided feedback on each report with a general overview.

1. General overview

Both reviewers support the PhD proposal. Each reviewer had specific points and suggestions, none of which change the overall structure and intent of the proposed Ph.D. The following will examine the specific suggestions.

The reviewers note that the Faculty will need to expand its faculty members with Ph.D.s and both offer helpful advice on how the Faculty might go about that. Certainly, the Faculty will require support from Administration to hire necessary resources (i.e., one new position in the Department of Architecture, a CRC for CAST and replacement positions through SIP), as noted in the proposal and reiterated by the reviewers.

2. Professor Sinclair's Report:

a. Proposed focus

Professor Sinclair questions the need for the two foci. He argues that the Ph.D. would be better served by the 'traditional' model of a general Ph.D. that attempts to attract candidates on the basis of their interests as those interests might relate to faculty interests and Faculty resources. In fact, the proposal is based on a NEW emerging model that offers a Design focus for the Ph.D. (as well as the more traditional planning focus). By offering a design focus, the Faculty will be the first in Canada to do so. It will address a growing trend internationally that has emerged in 1998. Universities are in fact beginning to establish Ph.D.s with a design focus (where that capability exists). For instance, the University of Arizona has recently announced such a degree and is holding an international conference on the topic in 2005. It is imperative that the Ph.D. offer both foci if we are to move ahead of other Canadian programs (including Calgary where Professor Sinclair is Dean).

There is a significant international debate that has emerged over the past four years around design Ph.D.s. The growing consensus is that programs that offer a Ph.D. in Design are highly desirable and marketable. Such a degree is cutting edge. It is essential that the Faculty of Architecture continue to aspire to lead rather than follow. A Ph.D. in Design will continue that initiative.

b. Proposed five streams

— The proposed five streams build on the strengths of the Faculty and other Faculties at the University of Manitoba. The streams rely, in part, on other Faculties for course delivery. This is intentional and reflective of the interdisciplinary thrust of the proposed Ph.D. Reducing the Ph.D. to a non-streamed degree reduces its ability to focus, to promote identified strengths and to target market to those applicants who have identified specific complementary aspirations. The streams can (and will) change over time as resources and needs change.

Rather than limit the Ph.D. candidates and the faculty, the streams declare strengths and interests and investments made to date. That will be helpful in attracting Ph.D. candidates and new faculty (and potential funding): Focus is key. Five streams permit the Faculty to focus its energies and resources. Given that there will be only four students admitted in any one year and that students will be admitted only if resources are available to

support their specific (and declared stream of interest), there will not be any threat of 'overloading' any one area or faculty member.

c. Imbalance of current Ph.D. faculty members

Professor Sinclair notes that there is an imbalance in the number of faculty members who have Ph.D.s in the four Departments (as confirmed in the Ph.D. Proposal). For instance, the Department of Architecture does not currently have a faculty member who holds a Ph.D. (note: this is common to architecture departments across the world- as confirmed by Professor Sinclair who is an architect himself and a Dean). The Faculty recognises this as an impediment to the delivery of a Ph.D. in Design where a candidate wishes to pursue a Ph.D. in the building structure stream. Therefore, the Faculty has instituted a 'grow our own Ph.D.' initiative whereby the Dean's Office supports and encourages faculty members to complete Ph.D.s. As noted in the Ph.D. proposal, there will be additional Ph.D.s over the next few years. In addition, the Deans Office is specifically encouraging Department of Architecture faculty to complete Ph.D.s. As well, the Department expects to hire a Ph.D. faculty member (History/Theory) within the next few months to join the Faculty in September. The Faculty has also been identified for a CRC for the Centre for Architectural Structures and Technology (CAST). That CRC will hold a Ph.D. and be central to a research agenda in the Department of Architecture (in building structures).

3. Dr. Seasons' Report:

a. Curriculum: research methods

Dr. Seasons recommends that the curriculum include a clear requirement that ensures that qualitative and quantitative methods are mandatory. That is in fact the intent of the proposal (it states that the research methods course will be required). We agree with him and it is so stated in the proposal. He suggests that the Research Methods course be taken in the first year and we agree. We have made that change.

b. Curriculum: length of time

Dr. Seasons suggests that the coursework be able to be completed within 24 months rather than 3 years. We agree and have made that change.

c. Degree name

Dr. Seasons recommends that the Ph.D. degree be called "Environmental Design." While that suggestion has some appeal, it is our view that it creates nomenclature problems by confusing it with our undergraduate degree (Environmental Design) and with the Faculty of Environment, Earth and Resources, environmental options.

As noted in the comments related to Professor Sinclair's suggestion for no special naming, the intent is to identify with the newly emerging Design Ph.D. dialogue that is being led by European universities.

d. Faculty name

Dr. Seasons suggests that we rename our Faculty. This is outside his mandate and is not something we intend to pursue, at least at the present time.

By and large the two separate reviews are quite supportive and urge the University to support the proposal.

The foregoing for your information.

DRW:imp

file: memo.ph.d.doc



UNIVERSITY
OF MANITOBA | Faculty of Architecture

February 2, 2005

Architecture
City Planning
Environmental Design
Interior Design
Landscape Architecture

Office of the Dean
Winnipeg, Manitoba
Canada R3T 2N2
Telephone (204) 474-9558
Fax (204) 474-7532

TO: Dr. Pam Hawranik, Associate Dean (Graduate Studies)

FROM: David R. Witty, Ph.D., MRAIC, FCIP
Dean, Faculty of Architecture *D. Witty*

SUBJECT: Notes on Professor Brian Sinclair's comments Re: Ph.D. Proposal

There were two separate reviews of our Ph.D. Proposal. One was very positive (Dr. Mark Seasons from the University of Waterloo) and one from Professor Brian Sinclair who is Dean of the Faculty of Environmental Design, University of Calgary where a Ph.D. is offered.

1. Weaknesses:

- ❑ Imbalance in Ph.D. credentials is recognised in the Ph.D. Proposal and is being addressed through new hiring and 'grow our own' Ph.D.s so that the Department of Architecture will have three Ph.D.'s in five years;
- ❑ Interdisciplinarity: no apologies here. This is in fact an intended focus within the Faculty and in linkages to other Faculties (principally Education, Environment and Engineering);
- ❑ Streams: are intended to give focus to the Ph.D. candidate research, complement existing interests and emerging needs and ensure that candidates are accepted with a clear sense of direction;
- ❑ Research record: the recent accreditation of the Graduate program in Architecture provided the following quote: "Recent initiatives such as CAST place the Architecture programme at the forefront of architectural research in North America." In addition, Interior Design is developing a strong research focus with its new Ph.D. faculty members and City Planning continues to have a very strong research agenda. The Faculty is leading the way in much of the design and planning research agenda in Canada;
- ❑ Internal concerns: the Ph.D. Proposal has been led by the Dean, but has involved significant consultation with an advisory committee and has received Faculty Council support on two occasions, including the latest in which the Faculty Council unanimously endorsed the Ph.D. Proposal May 22, 2003;

- Internal priorities: there is no lack of clarity on priorities: the Dean has shared the Strategic Resource Plan with Faculty Council, has developed it in consultation with Department Heads and Associate Deans and has identified the numerous priorities within the past two budget submissions.

It is my view the aforementioned comments have been addressed fully and were not raised by the other reviewer.

DRW:Imp

File:Sinclair.doc

Report of the Senate Planning and Priorities Committee on the Proposal to introduce a Ph.D. in Design and Planning in the Faculty of Architecture

Preamble

1. The terms of reference of the Senate Planning and Priorities Committee (SPPC) are found in the *Senate Handbook*, Section 8.32, wherein SPPC is charged with making recommendations to Senate regarding proposed academic programs.
2. The Programs and Planning Committee of the Faculty of Graduate Studies (FGS) has the responsibility of reviewing new graduate programs and makes recommendations to FGS Council.
3. On the basis of such a recommendation from the Programs and Planning Committee, the FGS proposes the creation of a new Ph.D. program in Design and Planning in the Faculty of Architecture.

Observations

1. The intent of the proposed Ph.D. program is to support advanced study and research of the built and natural environments, within the broad field of architecture, from the perspective of four Design and Planning disciplines: architecture, city planning, interior design, and landscape architecture. Design and Planning refer to two separate streams within the proposed Ph.D. program. The Design stream will examine the built and natural environment on a relatively small scale from building technology through urban design, whereas the Planning stream will do so on a relatively large scale from urban design through regional analysis. Cross-cutting the two streams are the four disciplines, each of which can operate at the Design or the Planning scale, and all of which are unusually well represented at the University of Manitoba with respect to faculty expertise and accredited undergraduate and Masters-level programs. The structure of the proposed program thus appears to draw upon the Faculty of Architecture's unique ability to deliver a broad, interdisciplinary education at this advanced level, and at the same time to support both the Faculty's emerging research focus and the University's recent commitment to develop the Centre for Music, Art, and Design, and the Centre for Architectural Structures and Technologies.
2. The Faculty of Architecture has carried out a needs assessment in relation to the proposed program, which speaks to the issue of possible demand for the program. The assessment concludes that very few universities in Canada could offer a similarly integrated Ph.D. program, and only the Université de Montréal currently does so, despite a growing emphasis on integration in current architectural research and practice (as noted by proponents and external

May 16, 2005

reviewers of this proposal). Enrolment is projected at two students annually in the first four years of the program, and up to 4 students in any one year thereafter. Total enrolment is projected at 8 students during the first four years, on the basis of faculty numbers.

3. A relevant Masters degree will be required for admission to the proposed Ph.D. program, with preference shown to candidates with a professional degree and experience who have further distinguished themselves in professional practice or education. Candidates will declare their intent to specialize in building structures, design and planning education, design and planning practice, design and planning theory, or sustainable design and planning; they must provide evidence of financial support; and they will be interviewed as part of the admission process. Among the requirements to complete the Ph.D. are 700-level courses in theory and research methods in Design and Planning, a comprehensive methods paper, and a comprehensive theory project, to be completed before the candidacy examination and thesis.
4. Two courses will be introduced: 166.7XX Advanced Theory of Design and Planning (3 credit hours), and 166.7YY Advanced Research Methods in Design and Planning (3 credit hours). Students will select the remaining 6 credit hours of required coursework from existing courses in several departments.
5. Delivery of the proposed program will be enhanced through a new academic appointment beginning on July 1, 2005. Optimally, another position will be sought in 2008 through the normal resource allocation process based on demand and budgetary considerations at that time.
6. The University of Manitoba Libraries can support the proposed program with existing resources. However, faculty members identified journals that would enhance the Libraries' current holdings, with a one-time cost of about \$3,000 to acquire back issues and ongoing subscription costs of about \$1,000 annually.
7. All other resources for the proposed program will be supplied from funds at the disposal of the Dean of the Faculty of Architecture.

Recommendations:

The SPPC recommends that:

Senate approve and recommend to the Board of Governors that it approve the introduction of a Ph.D. program in Design and Planning in the Faculty of Architecture.

Respectfully submitted,

May 16, 2005

Norman Hunter, Chair
Senate Planning and Priorities Committee

/jml

June 28, 2005

Report of the Senate Committee on the Calendar

Preamble

1. The terms of reference for the Senate Committee on the *Calendar* are found in Section 8.20 of the *Senate Handbook* (revised 2000).
2. The Committee is charged with preparing the University Calendars and providing advice on matters referred to it concerning the University Calendars.
3. The Committee met on June 22, 2005 to discuss issues relating to the *Calendar* and *Registration Guide*.

Observations

1. The paper version of the *Calendar*, published in April of each year, is currently the authoritative, official version of the *Calendar*. In addition to providing students and staff with information about courses, programs and policies, the *Calendar* is an integral part of the Universities promotion plan.
2. The Committee reviewed a Listing protocol for Faculties and Schools in the *Calendar* (paper and web). It was determined that listing Faculties and Schools by discipline would assist students when searching for specific disciplines.
3. The Committee felt that Faculties and Schools should also be cross-referenced by the full name to assist those familiar with the University structure.
4. The Committee discussed combining the *Registration Guide* and the *Calendar*. The two sections would remain as separate documents within the same book. Due to the fact that the *Calendar* is comprised of Senate approved matters, the Committee felt Senate should be made aware of the combination of the two documents. This change will reduce costs, increase efficiencies, and improve the distribution of the *Calendar* and *Registration Guides*.

Respectfully submitted,

Jeff M. Leclerc, Chair
Senate Committee on the *Calendar*

/nis

Report of the Senate Committee on Awards respecting Awards - August 3, 2005 (Part B)

Preamble

The Senate Committee on Awards (SCOA) terms of reference include the following responsibility:

"On behalf of Senate, to approve and inform Senate of all new offers and amended offers of awards that meet the published guidelines presented to Senate on November 3, 1999, and as thereafter amended by Senate. Where, in the opinion of the Committee, acceptance is recommended for new offers and amended offers which do not meet the published guidelines or which otherwise appear to be discriminatory under Policy No. 419, such offers shall be submitted to Senate for approval." (Senate, April 5, 2000)

Observation

At its meeting on August 3, 2005, Senate Committee on Awards reviewed two new applications that appear to be discriminatory under policy number 419. The committee received letters of support for the Mary and Louis Finkle Aboriginal and Immigrant Scholarship and the Sonia and Ralph Kaplan Aboriginal and Immigrant Bursary from Mr. Peter Dueck, Executive Director of Enrolment Services and Kali Storm, Director of the Aboriginal Student Centre.

Recommendation

The Senate Committee on Awards recommends that Senate approve and recommends that the Board of Governors approve the Mary and Louis Finkle Aboriginal and Immigrant Scholarship and the Sonia and Ralph Kaplan Aboriginal and Immigrant Bursary as set out in Appendix A of the Report of the Senate Committee on Awards - Part B dated August 3, 2005.

Respectfully submitted,

Diana Kaspersion (for)

Professor R. Baydack, Chair
Senate Committee on Awards

Comments of the Senate Executive Committee:
The Senate Executive Committee endorses
the report to Senate.

APPENDIX "A"

OFFERS

MARY AND LOUIS FINKLE ABORIGINAL AND IMMIGRANT SCHOLARSHIP

A gift of \$10,000 from the family of Mary and Louis Finkle, matched equally by the Manitoba Scholarship and Bursary Initiative, has established an endowment fund of \$20,000 to provide scholarship support annually to a student who is graduating from St. John's, Sisler or R.B. Russell High Schools and attends the University of Manitoba.

A scholarship, valued at the available annual interest (approximately \$450), will be offered each year to a student who:

- (1) is either Aboriginal (Status, non-Status, Métis, Inuit), a landed immigrant or a first-generation Canadian;
- (2) applies for admission to University 1 or any faculty or school of the University which admits students directly from high school;
- (3) is graduating from St. John's, Sisler, or R.B. Russell High Schools and has demonstrated consistent class attendance;
- (4) has achieved a minimum average of 80 percent on the courses considered for University entrance;
- (5) when enrolled at the University, is a full-time student taking a minimum 60 percent course-load;
- (6) demonstrates, with proper documentation, participation and leadership abilities through volunteer and extracurricular activities, including student government, athletic teams, associations, clubs, charities, religious organizations, part-time and/or summer employment, and a commitment to family.*

*These activities represent an important part of the scholarship selection. Preference will be given to candidates who have shown participation and leadership in as many of the above categories as possible.

St. John's, Sisler and R.B. Russell High Schools will each nominate one candidate each year. Out of this pool of three, the scholarship winner will be picked. Potential candidates will start gathering required application information in early spring. The nominations of the high schools will be forwarded to the University of Manitoba by May 1.

The selection committee will meet in late May or early June to select the award recipient. The scholarship recipient will be announced in June to allow the winner to be honoured at the high school graduation ceremony.

SENATE COMMITTEE ON AWARDS REPORT TO SENATE - AUGUST 3, 2005 (Part B)

The scholarship is only open to June high school graduates who are attending the University of Manitoba in the next fall or winter session. No deferrals will be allowed for subsequent sessions.

The selection committee will be named by the Executive Director of Enrolment Services and shall include a representative of the Finkle family and one representative each from St. John's, Sisler, and R.B. Russell High School (with these high school representatives serving in a non-voting capacity).

SONIA AND RALPH KAPLAN ABORIGINAL AND IMMIGRANT BURSARY

A gift of \$10,000 from the family of Sonia and Ralph Kaplan, matched equally by the Manitoba Scholarship and Bursary Initiative, has established an endowment fund of \$20,000 to provide bursary support annually to a student who is graduating from St. John's, Sisler or R.B. Russell High Schools and attends the University of Manitoba.

A bursary, valued at the available annual interest (approximately \$450), will be offered each year to a student who:

- (1) is either Aboriginal (Status, non-Status, Métis, Inuit), a landed immigrant or a first-generation Canadian;
- (2) applies for admission to University 1 or any faculty or school of the University which admits students directly from high school;
- (3) is graduating from St. John's, Sisler, or R.B. Russell High Schools and has demonstrated consistent class attendance;
- (4) has achieved a minimum average of 70 percent on the courses considered for University entrance;
- (5) has demonstrated financial need on the standard University of Manitoba bursary application form;
- (6) when enrolled at the University, is a full-time student taking a minimum 60 percent course-load;
- (7) demonstrates, with proper documentation, participation and leadership abilities through volunteer and extracurricular activities, including student government, athletic teams, associations, clubs, charities, religious organizations, part-time and/or summer employment, and a commitment to family.*

*These activities represent an important part of the bursary selection. Preference will be given to candidates who have shown participation and leadership in as many of the above categories as possible.

St. John's, Sisler and R.B. Russell High Schools will each nominate one candidate each year.

SENATE COMMITTEE ON AWARDS REPORT TO SENATE - AUGUST 3, 2005 (Part B)

Out of this pool of three, the bursary winner will be picked. Potential candidates will start gathering required application information in early spring. The nominations of the high schools will be forwarded to the University of Manitoba by May 1. The selection committee will meet in late May or early June to select the award recipient. (The names of bursary recipients cannot be released, according to University policy.)

The bursary is only open to June high school graduates who are attending the University of Manitoba in the next fall or winter session. No deferrals will be allowed for subsequent sessions.

The selection committee will be named by the Executive Director of Enrolment Services and shall include a representative of the Finkle family and one representative each from St. John's, Sisler, and R.B. Russell High School (with these high school representatives serving in a non-voting capacity).



UNIVERSITY
OF MANITOBA

Enrolment Services

July 22, 2005

421 University Centre
Winnipeg, Manitoba
Canada R3T 2N2
Telephone (204) 474-8820
Fax (204) 474-7554

Dr. Rick Baydack
Chair, Senate Committee on Awards
c/o Diana Kaspersion, Awards Establishment Coordinator
Financial Aid and Awards Office
422 University Centre

RE: Mary and Louis Finkle Aboriginal and Immigrant Scholarship
Sonia and Ralph Kaplan Aboriginal and Immigrant Bursary

Dear Dr. Baydack and members of the Senate Committee on Awards:

Enrolment Services at the University of Manitoba is committed to growth in Aboriginal education. The Aboriginal population in Manitoba makes up 11.7% (approximately 150,045) of the total population of Manitoba. According to the Senate-approved General Terms and Conditions for Student Awards at the University of Manitoba, we can allow and encourage the establishment of discriminatory awards for designated groups such as Aboriginal students as long as the proportion of Aboriginal students to the total student population falls below 80 percent of the proportion of Aboriginal people within the total provincial population. Eighty percent of 11.7% is 9.36%, and the population of Aboriginal students on campus is still a long way from 9.36% of the total student population.

In 2004-2005, the undergraduate student population was 23,935. At 9.36% of this total student population, we would hope to have a population of at least 2240 Aboriginal students. The actual number of self-declared Aboriginal students was 1563, or 6.53% of the undergraduate population.

	2003-2004	2002-2003	2001-2003	2000-2001
University of Manitoba undergraduate student population	23032	21724	20534	19000
Aboriginal undergraduate student population	1378	924	794	513
Aboriginal undergraduate student population by %	5.98%	4.25%	3.87%	2.70%

As the statistics show, Aboriginal students are a highly under-represented group within the University. Therefore, I strongly support the establishment of both the Mary and Louis Finkle Aboriginal and Immigrant Scholarship and the Sonia and Ralph Kaplan Aboriginal and Immigrant Bursary.

Peter Dueck
Executive Director, Enrolment Services



UNIVERSITY
OF MANITOBA

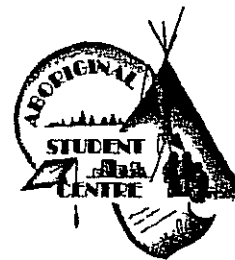
July 20, 2005

Aboriginal Student Centre

Dr. Rick Baydack

Chair of the Senate Committee on Awards

c/o Ms. Diana Kaspersion, Awards Establishment Coordinator
422 University Centre



537 University Centre
Winnipeg, Manitoba R3T 2N2
Telephone (204) 474-8850
Fax (204) 275-3142
Toll Free in Manitoba
1-800-432-1960 ext. 8850
asc@umanitoba.ca

Dear Dr. Baydack & Senate Committee:


Please accept this letter as formal support for the Mary and Louis Finkle Aboriginal and Immigrant Scholarship and the Sonia and Ralph Kaplan Aboriginal and Immigrant Bursary designed to assist Aboriginal students entering the University of Manitoba.

As the Director of the Aboriginal Student Centre, I can verify that financial strain is the leading cause for Aboriginal students leaving school before graduation. It is common knowledge that many Aboriginal peoples live in poverty and whereas a university education can help rectify this, most cannot afford to do so. It is only reasonable that the University of Manitoba would want to assist in rectifying this situation with or without the declared commitments made in the Strategic Plan.

The number of Aboriginal students attending the University of Manitoba continues to increase and, I believe, is partially due to the financial assistance made available through programs and faculties. Both the Mary and Louis Finkle Aboriginal and Immigrant Scholarship and the Sonia and Ralph Kaplan Aboriginal and Immigrant Bursary are examples of an educational institution wanting to assist with the financial difficulties faced by some of their students. For many Aboriginal students, attending university requires moving away from home knowing there is little or no financial assistance available from their families should they need it. I commend this effort to support Aboriginal students pursuing a degree at the University of Manitoba.

I trust that the Senate committee will approve this scholarship and bursary and others like it, in the hopes of increasing the recruitment and retention of Aboriginal students.

In education, mee-gwetch!


for Kali Storm
Director, Aboriginal Student Centre

- There are 150,045 Aboriginal people in Manitoba, or 11.7% of the population.
 - There are currently 1563 undergraduate Aboriginal students who self-declared at University of Manitoba, or 6.5% of the undergraduate population.
 - 2.9% of the Aboriginal population in Manitoba have completed university vs. 12.6% of the non-Aboriginal population.
- * Statistics are from the Government of Canada 'Aboriginal People in Manitoba' and from Institutional Analysis 'A Profile of Canadian Aboriginal Students at The University of Manitoba'.





UNIVERSITY
OF MANITOBA

July 28, 2005

Continuing Education Division

Office of the Dean
Winnipeg, Manitoba
Canada R3T 2N2
Telephone (204) 474-8009
Fax (204) 474-7660
perciva@ms.umanitoba.ca

Mr. Jeff LeClerc, University Secretary
Office of the University Secretary
313 Administration Building

**Re: Change of Unit Name: From Continuing Education Division
to Division of Extended Education**

Dear Mr. LeClerc:

At the Continuing Education Council meeting of May 4, 2005, the following motion was moved by Continuing Education Council Executive, seconded by Faye Bartlette and approved by Council:

"That Council approve the proposal to change the name of the Continuing Education Division to the Division of Extended Education."

On behalf of the Continuing Education Council, I request that a motion to change the name of the Continuing Education Division to the Division of Extended Education go forward to Senate and the Board of Governors for approval.

Rationale:

The rationale for this name change is briefly outlined below:

1. Changing Mandate:

- The title, Continuing Education Division, is not a good overall descriptor for the types of programs offered or the audiences served by the unit¹. It appropriately describes certificate and noncredit programs targeted to adult learners but registrations in these programs, though significant, now represent only 18-20% of total annual registrations. In the 5-year period between 2000/01 and 2004/05, nondegree registrations fell by 27%. Key indicators suggest that this downward trend may plateau but it is not likely to reverse.
- The current trend in programming, as reflected in registrations and new program initiatives, is increasingly focused on the development and delivery of degree credit offerings targeted to younger, sequential students. Between 2000/01 and 2004/05, registrations in degree credit increased by 32%; much of this growth was in Distance Education but Summer Session and Aboriginal Focus Programs have also experienced steady growth. New, atypical degree-based initiatives, such as the delivery of University 1 in Guangzhou, China,

¹ A brief overview of programs and services is provided in the attached Appendix.

starting this September, suggest additional growth potential in degree credit delivery to international high school graduates.

- Our increasing focus on degree credit is also reflected in the newly established Recognition of Prior Learning (RPL) Office funded by COPSE and intended to support degree credit RPL initiatives across the University.

2. Promotion/Branding Problems:

- The increasing divergence between the message implied by our current title with respect to our programs and target audiences (nondegree/noncredit-adult learners) and the reality of our programming (degree-young, sequential learners) creates serious “branding” problems for the unit. As our degree credit enrollments increase, the number of students we serve who actually identify with “continuing education” decreases. This disconnect is exacerbated by the decision of some degree program areas to intentionally disassociate their programs from the unit by omitting the Division’s title from promotion materials. As a result, we cannot create an identity for the unit that promotes awareness of the full range of programs and services we provide or that highlights our potential to develop innovative, outreach degree credit programming. This situation adversely affects our image within the wider community and it similarly affects how our role is perceived and understood within the University community. In addition, “continuing education” has a long history within universities and, for some, the phrase is tinged with connotations of marginality and low quality.

3. Rationale for “The Division of Extended Education”:

- Our quest for a title that better describes the range of programs and services offered by the unit included: a search of the titles of member units of the University Continuing Education Association (UCEA) and the Canadian Association for University Continuing Education (CAUCE); an invitation to staff to give feedback on selected titles and to brainstorm new titles; and a series of focus group interviews with students to get feedback on three title options.
- After much discussion and feedback from staff, the Division Management Team (DMT) selected “Extended Education” as the best overall title option for the following reasons:
 - 1) “Extended” is the most suitable of the new terms currently in use to describe units in the US and Canada that share similar programming profiles to our own. Our previous unit titles (Department of Extension and Adult Education, 1949; Extension Division, 1968; Continuing Education Division, 1975) have also reflected the terminology popular at the time. In the past, this strategy has been useful in developing broader community awareness of our mission within the university context.
 - 2) The term is flexible and open to our interpretation; for example, it can be used to describe programs that extend educational opportunities to existing or new audiences of learners through the use of technology,

off-campus and community-based delivery, alternative scheduling, tailored program formats, and modified or targeted content. At the same time, it does not carry the same connotations as "Extension", an established term with its roots in agricultural education.

- The University of Manitoba Bylaw 21.00 defines Continuing Education as a "division", as opposed to a faculty, school, department or institute. Although staff would have preferred an alternate term, none of the other categories identified in the Bylaw are appropriate and we could not agree on another term. As a compromise, assuming our new title is approved, we have decided that the unit will be referred to simply as "Extended Education" for promotion purposes and daily usage.

Implementation:

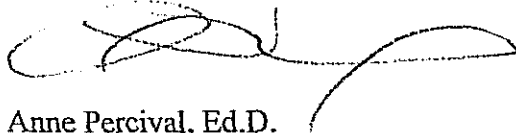
Assuming that the name change is approved, we intend to launch the new name with an internal and external promotion campaign, most likely in early spring to coincide with brochure preparation for 2006/07; however, as soon as approval is received, we will officially become Extended Education and we will begin the transition to our new identity.

To ensure that the transition is smooth and reasonably transparent for students and community partners who currently identify with "Continuing Education" (i.e., adult learners and community sponsors who support our certificate programs), Management, Professional and Community Programs, the area currently responsible for the majority of certificate program offered by the Division, will be renamed "Continuing Education".

In addition, the Distance Education Program will be renamed "Distance and Online Education" to better reflect the area's expertise in, and increasing focus on, online course development and delivery.

Please find attached a letter of support for our proposal from Dean John Wiens, Faculty of Education.

Sincerely,



Anne Percival, Ed.D.
Dean, Continuing Education Division

AP/sb
Attachments

Appendix: A Brief Overview of Continuing Education Division Programs/Services

Core Activities:

There are seven major program areas in CED: Aboriginal Focus Programs, ACCESS Programs, Distance Education, English Language Studies, General Studies, Management Professional and Community Programs, and Summer Session. We also offer the Canadian Forces University Program and Off Campus Study. We are currently involved in developing the supports necessary to deliver University 1 at the Clifford School, Guangzhou, China and we expect to offer a similar program at Sichuan University in 2006. We have also established the Recognition for Prior Learning (RPL) Office to support RPL initiatives across the University.

The following breakdown illustrates the primary credit type and delivery mode used by program areas:

Degree credit

- Aboriginal Focus Programs (community-based delivery)
- The ACCESS Programs (on campus supports for degree credit)
- The Canadian Forces University Program (distance delivery)
- The Distance Education Program (distance delivery)
- General Studies (on campus delivery)
- Off Campus Study (community-based delivery)
- Summer Session (on campus, some travel study)

Certificate Credit and Noncredit

- Aboriginal Focus Programs (community-based certificate credit)
- English Language Programs (on campus, noncredit and certificate credit)
- Management, Professional and Community Programs (on campus, off campus and distance delivery; primarily certificate credit)
- Summer Session (on campus, noncredit)

A brief description of the major program areas follows:

- Aboriginal Focus Programs (AFP) delivers degree credit diploma and transition programs as well as certificate programs that respond to the post-secondary and professional development needs of Aboriginal people. In cooperation with Aboriginal stakeholders and faculties, programs are delivered in community-based formats for part time or full time study. Courses are designed or modified to ensure relevance to Aboriginal learners and include appropriate supports for off campus learners. Programs delivered in Winnipeg are delivered at the University of Manitoba Downtown: Aboriginal Education Centre located in Place Promenade.
- The ACCESS Programs provide academic, personal, social and financial supports to non-traditional, primarily Aboriginal, students seeking degrees. ACCESS is currently comprised of four programs: University of Manitoba Access Program (UMAP), Special Premedical Studies Program (SPSP), the Professional Health Program (PHP), and the Nursing Access Program (NAP). Following an extensive program review, ACCESS will initiate a one-month orientation program this summer (2005) and is moving toward a two-year transition focus. In addition, SPSP will merge with NAP to create the Health Careers Access Program.

- The Distance Education Program (DE) provides flexible access to degree credit courses and programs by using instructional technologies that connect students and instructors who are physically separated. Since each instructional technology has distinct pedagogical implications for course design, face-to-face courses must be redesigned for distance delivery. Four delivery modes are used: independent study (print-based course materials, often supplemented by online and audiovisual materials), group-based study (print-based materials, supplemented by online and audiovisual materials, and discussion via audio-conference), net-based study (entirely online), and Campus Manitoba (a distance delivery partnership of Manitoba's post-secondary universities and colleges). Central to DE programming is the provision of appropriate academic and advising supports for distance learners.
- English Language Studies provides noncredit and certificate courses in second language acquisition and teacher training to students from Manitoba, Quebec and more than 20 countries around the world. The programs currently offered include the Intensive English Program, Summer Language Bursary Program, Certificate in Teaching English as a Second Language, Conversational Language Courses and customized courses for contract groups. Some online courses are currently under development.
- General Studies (GS) provides students who are not seeking a U of M degree with the opportunity to enroll in degree credit courses in various faculties/schools. Students may take courses for personal or professional development or to meet faculty entrance requirements. The types of students admitted include transfer students from other universities, returning U of M students, diploma students, international language studies students, and mature students. GS is also the "home faculty" for most visiting students at the University.
- Management, Professional and Community Programs (MPCP) develops and delivers comprehensive certificate and noncredit programs to meet the on-going learning needs of today's workforce. With over 30 programs ranging from adult education to applied counselling to management development, MPCP provides part time learners with the knowledge and skills needed to advance in their careers. Programs are designed and delivered in consultation with appropriate faculty, industry, and community leaders.
- Summer Session (SS) strives to develop a comprehensive, integrated program of studies at the University from May to September. To meet the needs of its primary audience, U of M undergraduate students, SS offers high demand degree courses and courses not scheduled in regular session, courses particularly suited to spring and summer, and new and innovative courses. New course development is supported by the SS Innovation Fund. SS also works with departments and the community to develop nondegree courses and programs, or combined degree and nondegree programs, with broad community appeal.

Three centralized service areas support CED programs: Finance & Information; Creative Services; and, Staffing & Administrative Services. In addition to our primary on campus location in the Continuing Education Complex, the ACCESS Programs are located in University Centre. We also operate the University of Manitoba Downtown: Aboriginal Education Centre in Place Promenade and we have an office and classroom facility in Thompson, Manitoba.



UNIVERSITY
OF MANITOBA

Faculty of Education

Office of the Dean
225 Education Building
Winnipeg, Manitoba
Canada R3T 2N2
Telephone (204) 474-9001
Fax (204) 474-7551
dean_education@umanitoba.ca

July 21, 2005

JUL 26 2005

Dr. Anne Percival
Dean, Continuing Education Division
167 Con Ed Complex
University of Manitoba
Winnipeg, Manitoba
R3T 2N2

Dear Dr. Percival:

Re: Faculty of Education Support for a Name Change from
Continuing Education Division to Division of Extended Education

On behalf of the Faculty of Education I wish to add our support of a name change for the Continuing Education Division from its current title to that of "Division of Extended Education," as endorsed by decision of the Continuing Education Council meeting on May 4, 2005. Not only is the proposed name change timely but also it reflects more accurately the work of the Division. In addition, we believe it would enable the Division to market its offerings more successfully. We encourage and urge the Senate of the University to accept this change at the earliest opportunity.

First, the name change reflects the evolving nomenclature of similar entities to the Continuing Education Division around the country, and thus would imply that the University of Manitoba is simply keeping pace with developments elsewhere. Second, "extended" education more accurately signals that the offerings and clientele of the Division are changing from older adult non-degree, upgrading students to younger adult degree and post-degree students furthering an area of study. Finally, it permits the Division to promote itself on a more advantageous footing in comparison to other like institutional arrangements. All in all, it seems like an opportune time to make this important shift in name.

Please understand that your Council has our full support for this name change, and, if we can assist in any way, we are prepared to do so.

Yours truly,

John R. Wiens, PhD
Dean

/lk