

THE BRICK PAINTING SET



Cliff Eyland / Leo Kamen Gallery



02

Photo by William Eakin. Courtesy Leo Kamen Gallery, Toronto.

Cliff Eyland, (BP40) from the *Brick Painting Set*, 2003. Acrylic on 1970s-era pocket camera on gessoed MDF board, 5"x3" (12.7x7.6 cm).



03

Photo by William Eakin. Courtesy Leo Kamen Gallery, Toronto.

Cliff Eyland, (BP39) from the *Brick Painting Set*, 2003. Acrylic on 1970s-era pocket camera (view is from an angle) on gessoed MDF board, 5"x3" (12.7x7.6 cm).



Cliff Eyland, (BP38) from the *Brick Painting Set*, 2003. Acrylic on 1970s-era pocket camera on gessoed MDF board, 5"x3" (12.7x7.6 cm).

Photo by William Eakin. Courtesy Leo Kamen Gallery, Toronto.

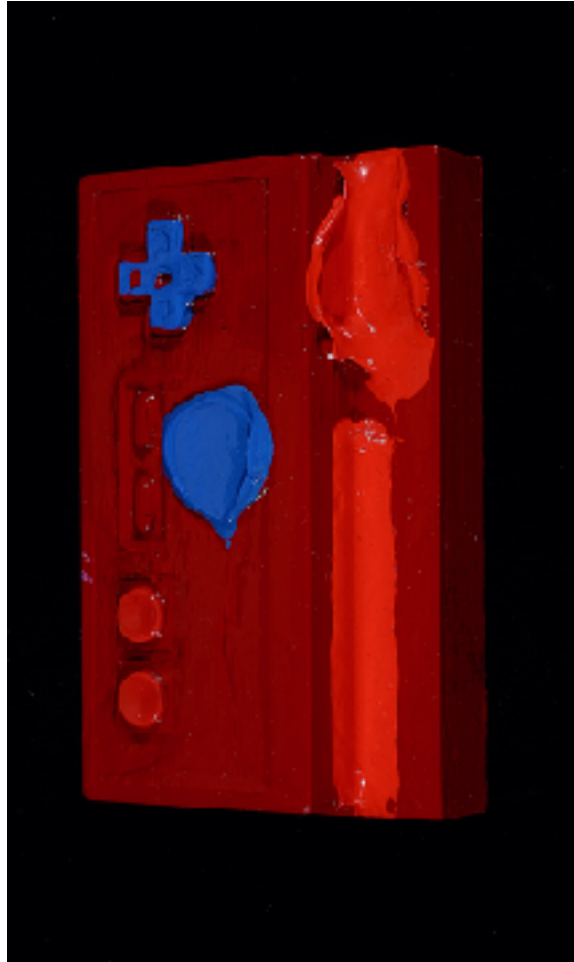
04



05

Photo by William Eakin. Courtesy Leo Kamen Gallery, Toronto.

Cliff Eyland, (BP34) from the *Brick Painting Set*, 2003. Acrylic on a tiny set of wooden shoes/speakers on gessoed MDF board, 5"x3" (12.7x7.6 cm).



06

Photo by William Eakin. Courtesy Leo Kamen Gallery, Toronto.

Cliff Eyland, (BP29) from the *Brick Painting Set*, 2003. Acrylic on hand-held gaming mechanism probably from an early Nintendo machine (shown from an angle) on gessoed MDF board, 5"x3" (12.7x7.6 cm).



07

Photo by William Eakin. Courtesy Leo Kamen Gallery, Toronto.

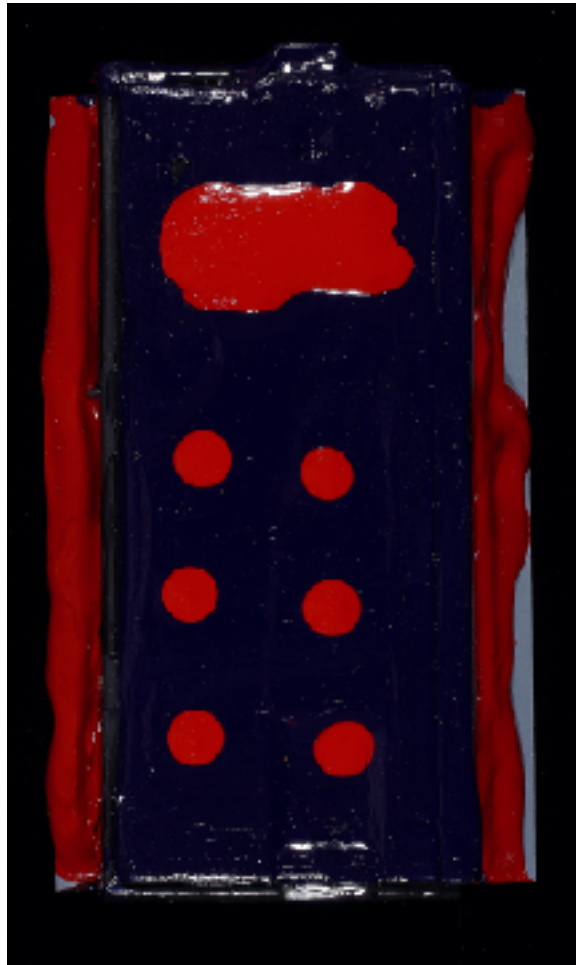
Cliff Eyland, (BP28) from the *Brick Painting Set*, 2003. Acrylic and miniature snow board on gessoed MDF board, 5"x3" (12.7x7.6 cm).



08

Photo by William Eakin. Courtesy Leo Kamen Gallery, Toronto.

Cliff Eyland, (BP24) from the *Brick Painting Set*, 2003. Acrylic on computer mouse on gessoed MDF board, 5"x3" (12.7x7.6 cm).



09

Photo by William Eakin. Courtesy Leo Kamen Gallery, Toronto.

Cliff Eyland, (BP12) from the *Brick Painting Set*, 2003. Acrylic on 1970s-era pocket camera on gessoed MDF board, 5"x3" (12.7x7.6 cm).



10

Photo by William Eakin. Courtesy Leo Kamen Gallery, Toronto.

Cliff Eyland, (BP11) from the *Brick Painting Set*, 2003. Acrylic on the roof of a toy building on gessoed MDF board, 5"x3" (12.7x7.6 cm). The work is shown at an angle.



Cliff Eyland, (BP11) from the *Brick Painting Set*, 2003. Acrylic on the roof of a toy building on gessoed MDF board, 5"x3" (12.7x7.6 cm). The work is shown at an angle.

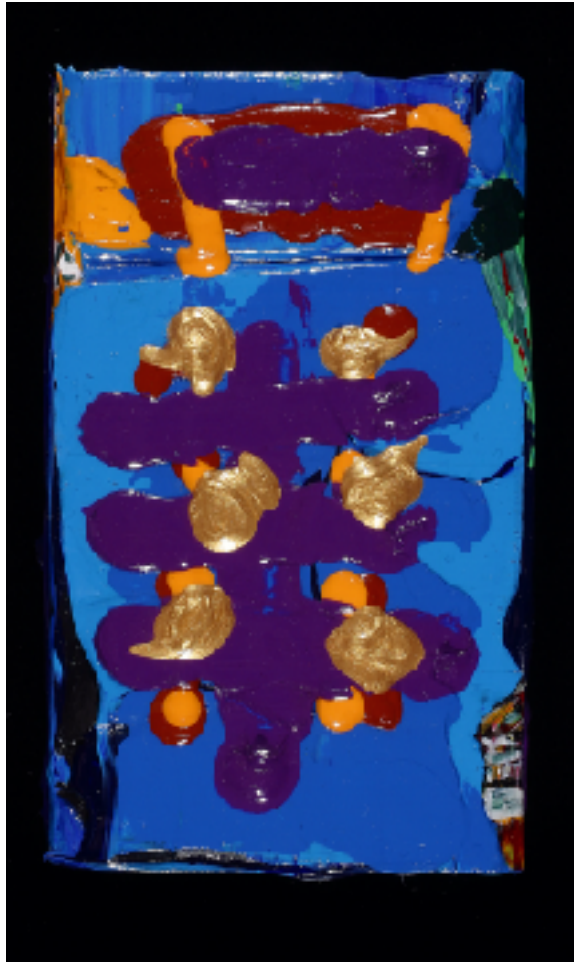
Photo by William Eakin. Courtesy Leo Kamen Gallery, Toronto.



12

Photo by William Eakin. Courtesy Leo Kamen Gallery, Toronto.

Cliff Eyland, (BP06) from the *Brick Painting Set*, 2003. Acrylic on gessoed MDF board, 5"x3" (12.7x7.6 cm). Acrylic and plastic bottle cap on gessoed MDF board.



13

Photo by William Eakin. Courtesy Leo Kamen Gallery, Toronto.

Cliff Eyland, (BP05) from the *Brick Painting Set*, 2003. Acrylic on gessoed MDF board, 5"x3" (12.7x7.6 cm). The board has been carved at the edges. Golden paint blobs serve as operating buttons for this device.