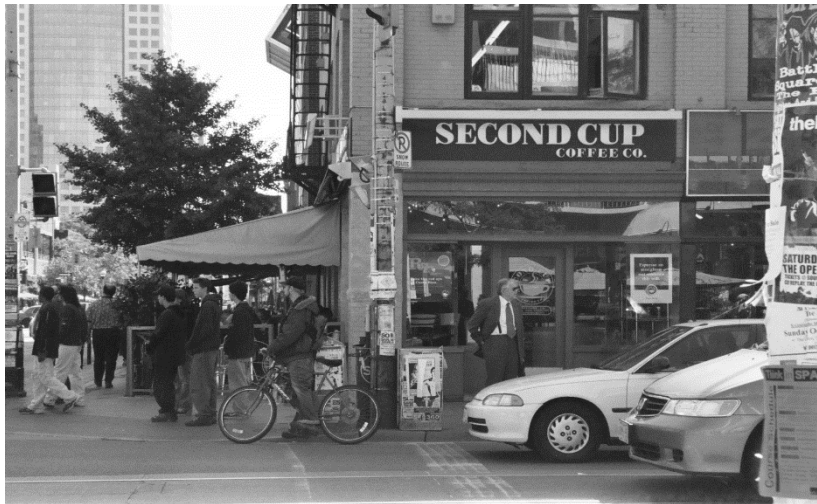


University of Manitoba  
Department of Sociology  
SOC 2260 A01 **Cities and Urban Life**

Tuesdays and Thursdays 10:00 am - 11:15 am, Russell 213

Fall 2017, 3 Credit Hours



Instructor: Dr. Sonia Bookman  
Office: 334 Isbister Building  
Telephone: 204 474 7832  
Email: [Sonia.Bookman@umanitoba.ca](mailto:Sonia.Bookman@umanitoba.ca)  
Office Hours: Tuesdays and Thursdays 11.30am -12.30pm  
UM Learn is the electronic platform for this course

### **Course Summary**

This course will look at some of the key approaches, issues, and trends in urban sociology. It begins with an introduction to urban sociology, the major theoretical approaches within the field, and some of the broader forces that shape cities and urban life. The course then considers the key theme of socio-spatial inequality in the city, focusing on suburbanization, gentrification, and urban poverty, as well as the implications of these processes for urban dwellers. Next, we turn our attention to the new urban political economy, which is characterized by an emphasis on the symbolic economy and the emergence of the 'entrepreneurial city'. The course will consider how this new urban configuration underpins a growing emphasis on place promotion, branding, and culture- and consumption-led redevelopment in the city, as well as the expansion of public-private partnerships in urban affairs. Particular attention is focused on consumption in the city, including the rise of new spaces of consumption and the relationship of consumption to urban identities, cultures, and social life. The course concludes with the theme of urban space, crime, and surveillance, considering issues such as the privatization and 'policing' of public urban space, as well as the rise of various forms of urban surveillance. The course will be organized around a combination of lectures, assigned readings, films, and discussions.

## Course Objectives

- To introduce students to key approaches and theoretical perspectives within urban sociology
- To offer students ways to understand and critically analyze contemporary forms of inequality and social organization in urban space
- To familiarize students with recent changes in contemporary cities, including the rise to prominence of the 'entrepreneurial city', the symbolic economy, and consumption.
- To develop an understanding of various approaches to, and implications of the cultural framing of the city and urban space
- To look at the shifting nature of urban politics and urban public space

## Required Textbooks

Hiller, H. (ed.) 2014. *Urban Canada*, 3<sup>rd</sup> edition. Toronto: Oxford University Press.

**Note: Additional required readings will be on reserve in the Dafoe library.**

## Assessment

### Assignments

- Students will complete two short written assignment designed to provide an opportunity to explore the topics covered in class in more depth, and to help develop the quality of your research, writing, and communication skills. Instructions will be handed out in class.
- Assignment #1 Due October 3, 2017
- Assignment #2 Due November 21, 2017

### Term Paper Outline

- Students are required to submit an outline of your term paper. This will include the thesis statement or research question. Additional details will be distributed in class.
- Due October 17, 2017

### Term Paper

- Students are required to write an essay of 2500 words. The essay topic will be chosen by the student from a list of possible essay questions, which will be distributed in class, OR the student can choose to write on a topic of his or her choice, subject to approval by the instructor. Students are responsible for contacting the instructor to obtain approval of such independently selected essay topics PRIOR to writing the essay.
- Due November 7, 2017

### Final Term Test

- A test of 60 minutes will be held in-class. Students will be presented with a list of possible questions, and asked to choose a fixed number of questions and answer these in mini-essay format. Questions will cover material presented in lectures, readings, films, and class exercises. Study questions will be provided at least one week prior to the test. For this class there will be no exam held during the examination periods. *Students should note that the instructor will not reschedule this test for any reason other than medical.*
- Scheduled for December 7, 2017

**Note:** Students are required to submit assignments and papers in *hard copy* form! Electronic copies will not be accepted. *Do not submit assignments or essays by email.* Students are instructed to *always keep a personal copy of any submitted work* in the case that they are required to submit another copy.

### **Grade Weights**

Assignments 40% (2 x 20% each)

Term Paper Outline 10%

Term Paper 30%

Final Term Test 20%

### **Grade Distribution**

<i>Letter Grade</i>	<i>Percentage</i>	<i>GPA</i>	<i>Description</i>
A+	91-100%	4.5	Exceptional
A	80-90%	4.0	Excellent
B+	75-79%	3.5	Very Good
B	70-74%	3.0	Good
C+	65-69%	2.5	Satisfactory
C	60-64%	2.0	Adequate
D	50-59%	1.0	Marginal
F	49% or less	0	Failure

### **Late Submissions, Missed Tests and Assignments**

Late papers and assignments will be penalized 3% per day late (including weekends). Medical documentation will normally be required to waive this penalty. However, if you know before the due date that a paper or assignment will be late you should contact me immediately. Extensions may be granted under extenuating circumstances, entirely at the instructor's discretion, **ONLY** if the student contacts the instructor **PRIOR** to the deadline.

Missing a test is a serious problem and is likely to result in a grade of 0. Only documented reasons will be accepted for missing a test. If you miss the test for health-related or emergency reasons, you should a) provide advance notice, if possible, by phoning or emailing the instructor, then b) directly contact the instructor *as soon as possible* to arrange a makeup test. Note that it is the student's responsibility for initiating a makeup test. Ordinarily, arrangements must be made within one week of the missed test; requests made later than one week will normally be denied. Under no circumstances will a makeup test be offered more than two weeks after the scheduled test.

### **Evaluative Feedback**

Students can expect to receive written comments and grades within three weeks of the date assignments, essays, or tests are submitted to the instructor. Accordingly, and if submitted by the due dates published, students will receive feedback on 30% of the required coursework (Assignment #1 and Term Paper Outline) before the voluntary withdrawal deadline.

### **Unclaimed Term Work**

Any term work that has not been claimed by students will be held for four (4) months from the end of the final examination period for the term in which the work was assigned. At the conclusion of this time, all unclaimed term work will become property of the Faculty of Arts and be destroyed according to FIPPA guidelines and using confidential measures for disposal.

### **Missed Films**

If you miss a film during a lecture you will need to view it at an alternative time. Making this arrangement is a student responsibility. To view a missed film, you will need a form that is available from 123 Fletcher Argue and which will require the instructor's signature. It is your job to bring the form to the instructor for signing during office hours or by appointment.

### **Academic Integrity**

Students should acquaint themselves with the University's policy on plagiarism, cheating, exam personation, ("**Personation at Examinations**" (Section 5.2.9) and "**Plagiarism and cheating**" (Section 8.1)) and duplicate submission by reading documentation provided at the Arts Student Resources web site at:

[http://umanitoba.ca/faculties/arts/student\\_resources/student\\_responsibilities\\_integrity.html](http://umanitoba.ca/faculties/arts/student_resources/student_responsibilities_integrity.html).

Ignorance of the regulations and policies regarding academic integrity is not a valid excuse for violating them.

**Note:** The Faculty of Arts reserves the right to submit student work that is suspected of being plagiarized to Internet sites designed to detect plagiarism.

- *The minimum penalty for plagiarism on a written assignment is F on the paper and may result in and F-DISC (discipline) in the course. This notation appears on the student's transcript. For repeat violations, this penalty can also include suspension from the Faculty of Arts for a period of up to 1 year.*

### **Recording Class Lectures**

Sonia Bookman and the University of Manitoba hold copyright over the course materials, presentations and lectures which form part of this course. No audio or video recording of lectures or presentations is allowed in any format, openly or surreptitiously, in whole or in part without permission from Sonia Bookman. Course materials (both paper and digital) are for the participant's private study and research.

### **Course Technology**

It is the general University of Manitoba policy that all technology resources are to be used in a responsible, efficient, ethical and legal manner. The student can use all technology in classroom setting only for educational purposes approved by instructor and/or the University of Manitoba Disability Services. Students should not participate in personal direct electronic messaging / posting activities (e-mail, texting, video or voice chat, wikis, blogs, social networking (e.g. Facebook) online and offline "gaming" during scheduled class time. If student is on call (emergency) the student should switch his/her cell phone on vibrate mode and leave the classroom before using it. (©[S Kondrashov](#). Used with permission)

## **Religious Holidays**

The University of Manitoba acknowledges the right of all students to observe recognized holy days of their faith. You will need to inform the instructor in writing of your intended absence(s) at least three weeks in advance, particularly if such absence(s) coincide with the set mid-term test date.

## **Student Accessibility Services**

If you are a student with a disability, please contact SAS for academic accommodation supports and services such as note-taking, interpreting, assistive technology and exam accommodations. Students who have, or think they may have, a disability (e.g. mental illness, learning, medical, hearing, injury-related, visual) are invited to contact SAS to arrange a confidential consultation.

*Student Accessibility Services* <http://umanitoba.ca/student/saa/accessibility/>

520 University Centre

204 474 7423

[Student\\_accessibility@umanitoba.ca](mailto:Student_accessibility@umanitoba.ca)

## **Disruptions**

Disruptions due to excessive talking or early departures from the classroom are especially distracting to large classes. Please be considerate and respectful to the needs and rights of others in the class. Students should be aware that persistent disruption may result in disbarment from the course. Any student who has a legitimate reason for leaving class early should inform the instructor at the beginning of class.

## **Voluntary Withdrawal**

Last day for voluntary withdrawal from the course without academic penalty is **November 17, 2017**.

## **Student and Instructor Responsibility**

My responsibility as your instructor begins with the University's ROASS Policy and extends to creating a safe, cooperative and stimulating learning environment for students. As your instructor, I have selected texts and organized classroom time to meet the objectives of this course. Lectures are designed to help you understand and extend the concepts and ideas discussed in your texts and in the films. I comply fully with all University of Manitoba policies regarding teaching.

Student responsibilities include:

- Students are responsible for their own learning. You are expected to do readings in advance of class and are required to come prepared. You will often need to independently cover material in the textbooks (since not everything in the textbook will be directly addressed in class). Tests will draw on assigned readings as well as the lectures.
- If you are unclear about material or have academic concerns or questions, it is your responsibility to ask for help. I will be pleased to provide help during my office hours or by appointment. Students are warmly invited to drop by during office hours or to arrange an appointment to discuss any issues, concerns, or questions related to the course.

Students are also responsible to track their own progress in the course, and to take action if you discover you are failing tests or papers.

- Students are responsible for complying with the policies on grades and tests, including policies on missed tests. You will find all course policies listed in this syllabus – please review it regularly. If you misplace this syllabus or a term schedule, you can request one by emailing the instructor.
- Students are asked to contribute to the creation and maintenance of a collegial learning environment; one in which all can develop as individuals and scholars, and in which the free and respectful exchange of ideas occurs. In order to achieve this, students are especially asked to be considerate and respectful of the needs and rights of other students in the class. Whispering and talking is especially inappropriate, since it bothers other students. Students who talk in class will be asked to leave the classroom. Other disruptions include late arrivals, early departures, mobile phone use, and other behaviour deemed inappropriate by the instructor or other students. Students should be aware that persistent disruption may result in disbarment from the course. Any student who has a legitimate reason for leaving class early should inform the instructor at the beginning of class and sit in a seat near the door to minimize disruption.

### **Lecture Topics and Readings**

*Handed out on the first day of term*