



The workshop will begin shortly.



**UM**

Faculty of Graduate  
and Postdoctoral Studies

# Faculty of Graduate and Postdoctoral Studies Orientation

- Who are we?
- FGPS and you?
- Who should you contact?



UM

Faculty of Graduate  
and Postdoctoral Studies

# Traditional Territories Acknowledgements

The University of Manitoba campuses and research spaces are located on original lands of Anishinaabeg, Ininiwak, Anisininewuk, Dakota Oyate, Dene and Inuit, and on the National Homeland of the Red River Métis.

UM recognizes that the Treaties signed on these lands are a lifelong, enduring relationship, and we are dedicated to upholding their spirit and intent. We acknowledge the harms and mistakes of the past and the present. With this understanding, we commit to supporting Indigenous excellence through active Reconciliation, meaningful change, and the creation of an environment where everyone can thrive. Our collaboration with Indigenous communities is grounded in respect and reciprocity and this guides how we move forward as an institution.





University  
of Manitoba

Faculty of Graduate and Postdoctoral Studies

Admissions

Funding and awards

Student experience

**Everything  
you need  
at your  
fingertips!**



Discovery happens here. The University of Manitoba offers the opportunity to conduct transformational research. Join the graduate students, postdoctoral fellows and researchers who come here from every corner of the world.

[umanitoba.ca/graduate-studies](https://umanitoba.ca/graduate-studies)



UM

Faculty of Graduate  
and Postdoctoral Studies



**Kelley Main,**  
Dean

## Faculty of Graduate and Postdoctoral Studies

- Administrative oversight for >150 graduate programs
- Over 1650 faculty members and 3,800 students
- More than 150 postdoctoral fellows

Liaise with Unit Heads, Graduate Chairs, Graduate Coordinators



**Stephen Kirkland**  
Associate Dean  
Natural Sciences/Engineering



**Dawn Sutherland**  
Associate Dean  
Social Sciences/Humanities

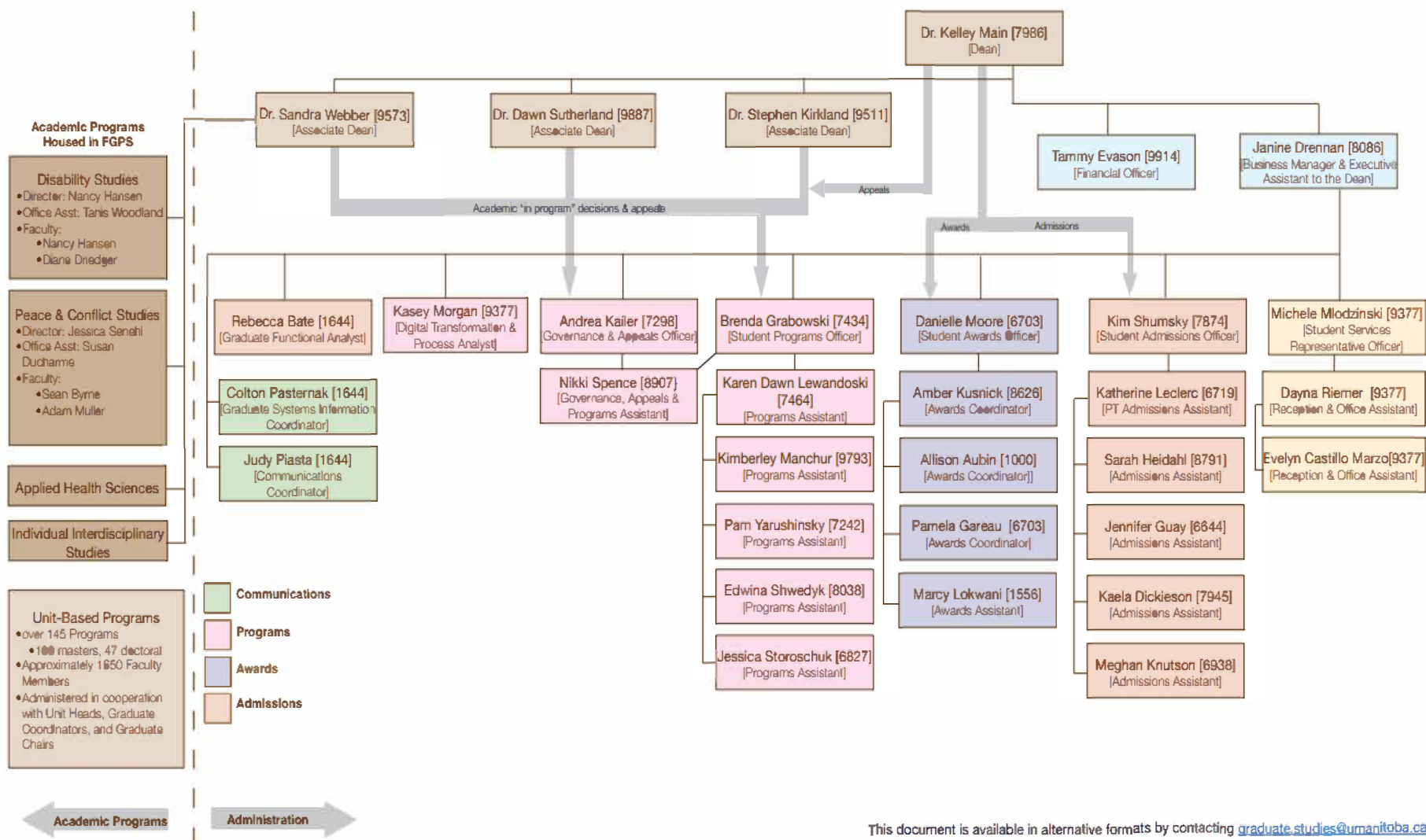


**Sandra Webber**  
Associate Dean  
Health Sciences



**UM**

Faculty of Graduate  
and Postdoctoral Studies



This document is available in alternative formats by contacting [graduate.studies@umanitoba.ca](mailto:graduate.studies@umanitoba.ca)

# Where you and FGPS intersect

- **Admissions**
- **Programs**
- **Academic Guide**
- **Academic and Research Integrity**
  - GRAD 7500, GRAD 7300 – mandatory online courses
- **Advisor-Student Guidelines**
  - establish expectations
- **Monitoring Progress**
  - Student Progress Report
  - Time To Completion
  - Thesis Examination → Grad checks
- **Professional Development**
  - GRADSTEPS (Campus to Career)
- **Communications**
  - Orientation, 3MT, MT180, Career Compass
- **Funding & Awards**

## Faculty of Graduate Studies | Program Portfolios

**Associate Dean, Dr. Stephen Kirkland**  
(ext. 9511)

**Brenda Grabowski**  
204.474.7434  
[brenda\\_grabowski@umanitoba.ca](mailto:brenda_grabowski@umanitoba.ca)

### Graduate Studies

- Applied Health Sciences
- Disability Studies
- Peace & Conflict Studies
- Individual Interdisciplinary Studies (IIS)
- Collaborative Ph.D.

**Nikki Spence**  
204.474.8907  
[nikki.spence@umanitoba.ca](mailto:nikki.spence@umanitoba.ca)

### Architecture

- Architecture
- City Planning
- Design & Planning
- Interior Design
- Landscape Architecture

**Jessica Storoschuk**  
204.474.6827  
[jessica.storoschuk@umanitoba.ca](mailto:jessica.storoschuk@umanitoba.ca)

### I.H. Asper School of Business

- Finance
- M.B.A.
- Management
- Supply Chain Management and Logistics

### Science

- Biological Sciences
- Chemistry
- Computer Science
- Mathematics
- Microbiology
- Physics & Astronomy
- Statistics

**Karen Dawn Lewandoski**  
204.474.7464  
[kd.lewandowski@umanitoba.ca](mailto:kd.lewandowski@umanitoba.ca)

### Agricultural & Food Sciences

- Agribusiness & Agricultural Economics
- Applied Human Nutrition
- Animal Science
- Entomology
- Food Sciences
- Human Nutritional Sciences
- Plant Science
- Soil Science

### Environment, Earth & Resources

- Earth Sciences
- Environment & Geography
- Geography
- Natural Resources & Environment
- Natural Resources Institute

### Fine Art

- Art & Architectural History

### Law

- Human Rights
- Law

### Music

- Music
- Music Research

### Rehabilitation Sciences

- Occupational Therapy
- Physical Therapy
- Rehabilitation Sciences

**Associate Dean, Dr. Dawn Sutherland**  
(ext. 9887)

**Edwina Shwedyk**  
204.474.8038  
[edwina.shwedyk@umanitoba.ca](mailto:edwina.shwedyk@umanitoba.ca)

### Arts

- Anthropology
- Classics
- Economics
- English
- French
- German Studies
- History
- Indigenous Studies
- Linguistics
- Philosophy
- Political Studies
- Psychology
- Public Administration
- Religion
- Sociology
- School Psychology
- Slavic Studies

### Education

- Curriculum, Teaching & Learning
- Educational Administration, Foundations & Psychology
- Education

### Université de St. Boniface

- Canadian Studies
- Education

**Associate Dean, Dr. Sandra Webber**  
(ext. 9573)

**Kim Manchur**  
204.474.9793  
[kimberley.manchur@umanitoba.ca](mailto:kimberley.manchur@umanitoba.ca)

### Medicine

- Biochemistry & Medical Genetics
- Community Health Sciences
- Genetic Counselling
- Human Anatomy & Cell Science
- Immunology
- Medical Microbiology & Infectious Diseases
- Pathology
- Pediatrics & Child Health
- Pharmacology & Therapeutics
- Physician Assistant Studies
- Physiology & Pathophysiology
- Surgery

### Pharmacy

### Nursing

**Pam Yarushinsky**  
204.474.7242  
[pam.yarushinsky@umanitoba.ca](mailto:pam.yarushinsky@umanitoba.ca)

### Dentistry

- Oral Biology
- Oral & Maxillofacial Surgery (DDSS)
- Orthodontics (PDS)
- Pediatric Dentistry (PDS)
- Periodontics (DDSS)
- Prosthodontics (Restorative Dentistry)

### Engineering

- Biomedical
- Biosystems
- Civil
- Electrical & Computer
- Mechanical

### Kinesiology & Recreation Management

### Social Work

- Social Work
- Social Work - Indigenous Knowledges





# ACADEMIC CALENDAR

**Important Dates**  
**University Policies & Procedures**  
**General Academic Regulations**  
**Admissions**  
**Academic Guide**  
**Programs**  
**Awards**  
**Registration Information**

# FGPS Academic Guide

Application & Admission Procedures  
Academic Performance

General Regulations: Pre-Master's  
General Regulations: Micro-Diploma  
General Regulations: Diploma  
Master's Degree General Regulations:  
Doctor of Philosophy General Regulations

Policy of Withholding Thesis Pending Patent Applications or Manuscript Submission

Extension Time to Complete Program of Study Content  
Leave of Absence (regular, exceptional, parental)  
Appeals: Procedures & Guidelines

Appendix – Thesis/Practicum Types (formatting requirements)

BFAR statement	Taught	Assessed
Student must successfully complete a co-operative experience or practicum, if required by their program.		GRAD 7030
Student must successfully complete a comprehensive exam, project, studio exhibition, or equivalent, as required by their program and determined by the assigned examining committee.	GRAD 7010 GRAD 7050 GRAD 7090 GRAD 7200	GRAD 7010 GRAD 7050 GRAD 7090 GRAD 7200 Examining/Adjudication Committee
Student must produce a recorded/published thesis commensurate with degree being sought.	Master's GRAD 7000 Doctoral GRAD 8000	GRAD 7000 GRAD 8000
Student must successfully defend their thesis (where required), as determined by the assigned examining committee, in real-time.	Master's GRAD 7000 Doctoral GRAD 8000	GRAD 7000 GRAD 8000
Student in doctoral program must complete a candidacy exam (or equivalent) as required by their program and determined by the assigned examining committee.	GRAD 8010	GRAD 8010
Student must demonstrate knowledge of the University of Manitoba's policy on academic integrity, plagiarism, and cheating.	<a href="#">GRAD 7500</a>	<a href="#">GRAD 7500</a>
Student must conduct research in a safe and ethical manner, referring to their respective ethics board and supervisor(s) to ensure respect is maintained for: human dignity and/or animal welfare; vulnerable persons; informed consent; justice and diversity; confidentiality and privacy; beneficence and non- maleficence in the work that they conduct.	<a href="#">GRAD 7300</a>	<a href="#">GRAD 7300</a>
Student must complete coursework as required by their program.		

## Faculty of Graduate and Postdoctoral Studies Bona Fide Academic Requirements Core academic requirements

### Additional requirements by program of study

If you are a student in any of the following programs of study, you must also meet the additional BFARs of those programs, as detailed in the PDFs here.

School of Fine Arts BFAR (PDF) →  
 Geological Sciences BFAR (PDF) →  
 German and Slavic Studies BFAR (PDF) →  
 Faculty of Music BFAR (PDF) →  
 College of Nursing BFAR (PDF) →  
 Occupational Therapy BFAR (PDF) →  
 Physical Therapy BFAR (PDF) →  
 Genetic Counselling BFAR (PDF) →  
 Soil Science BFAR (PDF) →  
 Université de Saint-Boniface Education BFAR (PDF) →

# Grad 7500 – Academic Integrity

## GRAD 7500 - Academic Integrity

All graduate students must complete GRAD 7500 Academic Integrity in their first term of study.

The University of Manitoba upholds a high standard of academic integrity across all faculties, departments and schools. Students must demonstrate knowledge of the university's rules regarding academic integrity, plagiarism, and cheating. Penalties for breaching these rules can result in suspension or even expulsion from your program of study.

This is a zero (0) credit hour course that will introduce you to your basic responsibilities regarding academic integrity and to the resources designed to support you in this endeavour.

There is no enrolment fee for this course.

### Course description

GRAD 7500 is an online tutorial made up of seven units. These units:

- explore what is meant by academic integrity
- demonstrate what is considered to be academic misconduct
- help you identify strategies to avoid academic misconduct and achieve with integrity in and beyond the classroom
- provide valuable resources to facilitate achieving this gold standard of scholarly conduct

### Working through the course

You will complete the course online on the UM Learn learning platform.

To get the most from this learning experience, we suggest you complete one unit every three days; however, you are free to move through the course at your own pace.

You must read all of the information, watch each video, and participate in each discussion, reflection and quiz within the seven units to access and complete the final quiz. Each of the units will take approximately 45 to 60 minutes to complete.

Refer to the [GRAD 7500 tutorial instructions](#) if you run into difficulties.

## ALL graduate students must register for and complete GRAD 7500

- Zero (0) credit-hour course
- Online
- Seven (7) Units
- 45-60 minutes to complete each Unit
- 24-hour release delay between Units
- PASS requires 95% on Final Quiz
- Five (5) attempts of Final Quiz
- Remediation
  - ✓ Workshop with course coordinator



# Graduate Students and Generative AI

- **The Academic Guide indicates the use of Generative Artificial Intelligence is prohibited for submissions of any degree program requirement unless the department/unit supplementary regulations allow it.**
  - When conducting research at the University of Manitoba, graduate students are considered researchers and must be familiar with and adhere to the Responsible Conduct of Research and Code of Research Ethics policies and procedures.
- Within these policies and procedures, it is important to review the expectations, including those for Academic Rigour and Attribution, carefully as they are of relevance to the use of genAI.
- If you are in doubt about whether you should use genAI technology to support your graduate research, **please discuss with your research supervisor/advisor and your examining committee before using it.**
  - Open discussion and transparency is especially important for a researcher and not understanding the implications of using genAI technology in research can result in mistakes, which will have consequences.
  - If genAI can support your research activities, acknowledgement that the technology was used is absolutely necessary and statements should be included in anything produced (theses, reports, posters, publications, etc.)


# Grad 7300 – Research Integrity

## Course overview

GRAD 7300 Research Integrity is a zero (0) credit-hour interactive online course that is accessed through UM Learn. As a Bona Fide Academic Requirement (BFAR), GRAD 7300 is mandatory for all graduate students at the University of Manitoba. It has been identified as a BFAR because research integrity applies to all disciplines and all types of academic programs. GRAD 7300 reviews key concepts of responsible professional behaviour through a wide lens of “research” which spans text-based studies, creative and scholarly activities, as well as research requiring data collection.

*Effective Fall 2020, GRAD 7300 must be completed in the first year of a graduate student’s program. Completing GRAD 7300 prior to or during the application process to any ethics boards which are appropriate to the student’s research is strongly encouraged.*

## When do I need to take it?

If you have not already taken the Research Integrity Tutorial, you need to register in GRAD 7300 and complete the tutorial within your first year in the program. 

It is beneficial for students to complete GRAD 7300 Research Integrity Tutorial prior to submitting their ethics application. However, the REB process will not be halted because GRAD 7300 has not been completed.

The completion of GRAD 7300 is an FGS Academic Guide policy and not a policy of the ethics offices.

If you have completed the TCPS 2: CORE (Course on Research Ethics) tutorial, you must still take GRAD 7300. These courses are complementary, not redundant to one another.

### Core modules

- Good Research Conduct
- Irresponsible Research Practices
- Planning Your Research
- Managing and Recording Your Research
- Data Selection, Analysis and Presentation
- Scholarly Publication
- Professional Responsibilities
- Communication, Social Responsibility and Impact

**ALL graduate students must register for and complete GRAD 7300**

- Zero (0) credit-hour course
- Online
- 8 core modules, with 7 supplementary modules.
- 5 hours in duration
- 80% required to pass each core module



# Supplementary regulations


The Faculty of Graduate and Postdoctoral Studies is a pan-University faculty that is responsible for the oversight of the administration of all graduate programs at the University.

## Supplementary regulations by unit

The regulations in the Faculty of Graduate and Postdoctoral Studies Academic Guide apply to all graduate students in all programs in all academic units. Individual programs/units may require specific requirements above and beyond those in the Academic Guide, and students should consult the supplementary regulations governing their program for these specific regulations. All supplementary regulations require approval of the Faculty of Graduate and Postdoctoral Studies. Note that the supplementary regulations linked below may be organized by department/unit or by program.


### Agribusiness and Agricultural Economics

 [Agribusiness and Agricultural Economics \(PDF\)](#)

 [Agribusiness and Agricultural Economics \(Word\)](#)

### Animal Science

 [Animal Science \(PDF\)](#)

 [Animal Science \(Word\)](#)

<p><b>Note:</b> This is the minimum requirement of the Faculty of Graduate Studies and departments/units may have higher standards and additional criteria.</p>	
<p><b>6.3 Program Requirements</b></p> <p>In general, students must complete one of the programs of study described below for the Master's degree. However, the program of study is determined by the department/unit and may follow the department/unit's supplementary regulations. . Some programs are subject to an external accrediting body. In such programs, the credit hours and course requirements shall reflect the requirements of the department/unit's external accrediting body. Students should refer to department/unit supplementary regulations.</p> <p>Any single course cannot be used for credit toward more than one degree.</p>	<p>Students may earn the M.A. degree only through the thesis option.</p>
<p><b>6.3.1 Thesis/Practicum Route</b></p> <p>A minimum of twelve (12) credit hours of coursework, unless otherwise stated in the department/unit's supplementary regulations, plus a thesis or practicum is required. The minimum must include at least six (6) credit hours at the 7000-level or above, with the balance of the coursework at the 3000-level or above. A maximum of twenty-four (24) credit hours of coursework is allowed unless the department/unit's supplementary regulations indicate otherwise. The student must complete the thesis/practicum at The University of Manitoba.</p>	<p>Students must complete:</p> <ul style="list-style-type: none"> <li>(1) 12 credit hours of coursework at the 7000 level, including at least 9 credit hours of Anthropology courses;</li> <li>(2) a mandatory pass/fail ANTH 7000 Professional Development in Anthropology course; and</li> <li>(3) a thesis.</li> </ul> <p>Elective coursework is selected in consultation with the advisor, and must be approved by the Department Head.</p>
<p><b>6.3.2 Course-based, Major Research Paper, Project or Comprehensive Examination Route</b></p> <p>A minimum of twenty-four (24) credit hours of coursework is required. If the student is in the comprehensive examination route, a comprehensive examination(s) is required. The minimum must include at least eighteen (18) credit hours at the 7000-level or above with the balance of the coursework at the 3000-level or above. A maximum of forty-eight (48) credit hours of coursework is allowed unless a department/unit's supplementary regulations indicate otherwise. Refer to unit supplementary regulations concerning specific regulations on coursework, major research paper, project and/or comprehensive examination requirements.</p>	
<p><b>6.3.3 Language Requirements</b></p> <p>Some department/units specify an additional language requirement for the Master's degree. Students should check department/unit supplementary regulations regarding this requirement.</p>	<p>Not required.</p>



**UM**

Faculty of Graduate  
and Postdoctoral Studies



# For my Master's program, who can be my Advisor?

The advisor must:

- hold an appointment in the student's department/unit;
- be a member of the Faculty of Graduate Studies<sup>1</sup>;
- hold at least a Master's degree or equivalent<sup>2</sup>;
- be active in their field;
- have expertise in a discipline related to the student's program.

# For my doctorate, who can be my Advisor?


## Student's Advisor

Every Ph.D. student must have an advisor throughout their program, who is recommended to the Faculty of Graduate Studies by the Department/Unit Head. The advisor is responsible for supervising the student's graduate program. The advisor is the student's first point of contact at the University of Manitoba and must be familiar with the general policies and regulations of the Faculty of Graduate Studies as well as the specific supplementary regulations of their academic department/unit. In this capacity, the advisor assists the student in planning the graduate program and ensures that the student is aware of all graduate program requirements, degree regulations, and general regulations of the academic department/unit, the Faculty of Graduate Studies, the university, and external funding agencies. The advisor provides counsel for all aspects of the graduate program, and stays informed of the student's scholarly activities and progress. The student's advisor also acts as a channel of communication to the student's advisory committee, the department/unit and the Faculty of Graduate Studies.

The advisor must:

- hold an appointment in the student's department/unit.
- be a member of the Faculty of Graduate Studies\*;
- hold a Ph.D. or equivalent\*\*;
- be active in research; and
- have expertise in a discipline related to the student's program.

# How do I know what to expect with my advisor?



The screenshot shows the University of Manitoba Graduate Studies Hub website. The header includes the UM logo and the text "Graduate Studies Hub". Navigation links include "Home", "Professional Development and Resources", "Program Requirements", and "Other Pages". A "Send to" dropdown and "Immersive Reader" link are also present. The main content area features a large image of a pen writing on a document with the word "Signature" visible. Overlaid on this image is a blue box with the text "GRADUATE STUDIES HUB: PROGRAM REQ." and "Advisor-Student Guidelines". Below the image, the section "Advisor-Student Guidelines (ASG)" is displayed, followed by a paragraph explaining the guidelines and a section for "Quick Links" with three items: "External Users", "Submit a request for external access to the Graduate Studies Hub", and "Submit your feedback: Advisor-Student Guidelines".

UM  
Faculty of  
Graduate Studies

Graduate Studies Hub

Home Professional Development and Resources Program Requirements Other Pages

Send to Immersive Reader

GRADUATE STUDIES HUB: PROGRAM REQ.

Advisor-Student Guidelines

Signature

## Advisor-Student Guidelines (ASG)

The Advisor-Student Guidelines were introduced in 2013 to encourage students, advisors, and co-advisors to discuss key matters of importance to the Advisor-Student relationship early in the formation of that relationship.

Completion of the Advisor-Student Guidelines is required of all students in thesis and practicum programs (including Ph.D. programs). Per the Faculty of Graduate Studies' Academic Guide:

### Quick Links

- > External Users
- Submit a request for external access to the Graduate Studies Hub
- Submit your feedback: Advisor-Student Guidelines

<https://umanitoba.sharepoint.com/sites/fgshub>

# What are we going to discuss in the ASG?

## Contents

Section 1: Preamble .....	
Section 2: Student Information .....	
Section 3: Add Advisor .....	
Section 4: Add Co-Advisor .....	
Section 5: General Roles and Responsibilities: Advisor .....	
Section 6: General Roles and Responsibilities: Student .....	
Section 7: General Roles and Responsibilities: Faculty of Graduate Studies and Department/Unit ..	1
Section 8: Meetings .....	1
Section 9: Publications and Patents .....	1
Section 10: Intellectual Property, Academic Integrity, and Ethics .....	1
Section 11: Timelines and Completion .....	1
Section 12: Funding .....	1
Section 13: Student Resources and Safety Information .....	1
Section 14: Privacy and Confidentiality .....	1
Section 15: Professional Development .....	1
Section 16: Other .....	2





# How do I know if I am making progress?

## Annual Progress Reports are due June 1

- No more than once per term
- It reviews the past year and sets goals for the next year or period.

This form must be completed at least annually but no more than once every four months and returned to FGPS no later than June 1 of every year. Failure to provide a Progress Report by June 1 will result in a registration restriction.

For the period from  to

### Part A | Program of Study Status (to be completed for all students)

Student Name (LAST, First)  Student Number

Major Department / Unit  Program Start Date (mm/yyyy)

Student Status ☐ Full-Time ☐ Part-Time Expected Program Completion Date (mm/yyyy)

Program of Study? ☐ Ph.D. ☐ Master's thesis ☐ Master's practicum ☐ Master's comprehensive  
☐ Master's project ☐ Master's coursework ☐ Master's major research paper

Coursework Completed? ☐ Yes ☐ No If no, please indicate the number of credit hours yet to be completed

Coursework Current? (within 7 years) ☐ Yes ☐ No

**Students are responsible for ensuring that they meet degree and program requirements.** The advisor (and co-advisor), advisory committee and the department/unit must ensure that each student follows Faculty of Graduate and Postdoctoral Studies and department/unit guidelines and meets all program requirements. The Faculty of Graduate and Postdoctoral Studies performs a final check of Faculty of Graduate and Postdoctoral Studies minimum requirements for each student just prior to graduation. Students are cautioned, therefore, to periodically check all regulations with respect to their degree requirements. **Failure to meet all requirements will render a student ineligible to graduate.**

### Part B | Thesis or Practicum Routes (to be completed for Ph.D. and Master's students in the thesis or practicum routes only)

Advisor Student Guidelines Completed? ☐ Yes ☐ No Reviewed Currently?\* ☐ Yes ☐ No

\*The Advisor Student Guidelines (ASG) must be completed as soon as possible after registration, but no later than at the time of submission of the first progress report. The ASG only needs to be completed once during a student's program, unless the student changes advisor(s), and/or the terms of the agreement change, in which case a new ASG would be required. FGPS recommends that the ASG be reviewed once per year. The ASG form is available only online through SharePoint.

#### Has the student met with the advisor(s) or the advisory committee during the reporting period?

*Note: Ph.D. students must meet with their entire committee at the same time at least once a year to review the student's progress, as per FGPS regulations.*

☐ Yes, met with advisory committee

☐ Yes, advisor(s) only Please indicate why

☐ No Please indicate why

Expected Completion Date

Practicum Stream Only	Practicum topic approved? <input type="checkbox"/> Yes <input type="checkbox"/> No	<input type="text" value="(mm/yyyy)"/>
Thesis Stream Only	Thesis proposal approved? <input type="checkbox"/> Yes <input type="checkbox"/> No	<input type="text" value="(mm/yyyy)"/>
	Ethics approved? <input type="checkbox"/> Yes <input type="checkbox"/> No <input type="checkbox"/> N/A	<input type="text" value="(mm/yyyy)"/>
	Research completed? <input type="checkbox"/> Yes <input type="checkbox"/> No	<input type="text" value="(mm/yyyy)"/>
	Ph.D. Students Only	Candidacy exam completed? <input type="checkbox"/> Yes <input type="checkbox"/> No

# How long do I have to complete my program?

## Time to Completion

### Master's

The maximum time allowed for the completion of the Master's degree is four (4) years for students declared as full-time and six (6) years for students declared as part-time (see Student Status/Categories of Students for information on calculating maximum time for students). Individual departments/units and/or programs may have specified minimum and maximum time limits.

### Ph.D.

The maximum time allowed for the completion of the Ph.D. degree is six (6) years following initial registration in the Ph.D. program. For those students who transfer from the Master's to the Ph.D., years spent in the Master's program are counted as years in the Ph.D. program.

# **Professional Development**

## **Communications**

## **Funding & Awards**

# Graduate student workshops

Take advantage of a variety of workshops to help you throughout your graduate program.

## On this page

- [Upcoming workshops](#)
- [Full workshop offering \(GradSteps, Mitacs\)](#)
- [Claim workshops for your co-curricular record](#)
- [Other workshops for grad students](#)
- [Workshop partners](#)
- [Contact us](#)



Know Your Resources: the Basic Step

Personal Management: the Healthy Step

Data Management: the Research Step

Writing and Speaking: the  
Communication Step

Planning with Intention: the Career Step

Ideas Into Action: the Entrepreneurial  
Step

# Mitacs workshops

Mitacs is a not-for-profit organization specializing in research and training.

Starting October 2021, Mitacs has launched a new curriculum designed to complement the hands-on research skills and experience gained by participants of Mitacs programs to better align content with the competencies needed by industry partners and employers, and to respond to modern learning preferences.

The new curriculum is transitioning away from fully in-person and fully online course offerings to a hybrid 'course bundle' model, in which asynchronous requirements must be completed to register for the synchronous portion, now lasting 1-3 hours, instead of a full day.

The following course bundles are currently available on EDGE:

- Career Planning
- Communication Skills
- Leadership Skills
- Networking Skills
- Project and Time Management
- Reconciliation, Equity, Diversity and Inclusion
- Writing and Presentation Skills

Course descriptions can be found on the [Mitacs Training](#) website. As of August 2022, Mitacs has added **official certificates of completion** for each of the course bundles.

To register, visit [Mitacs EDGE](#). If you have any questions or have issues with your EDGE account, please contact the [Mitacs Training](#) team.

For registration instructions, please see [How to register for a course bundle on EDGE \(PDF\)](#).

## Registration

Registration for Mitacs workshops is through [Mitacs EDGE](#).

**i** You can cancel your registration or choose another session up to seven days prior to the session's date, by clicking on "Cancel" or "Change session" on the course page.

**i** All instructor-led-courses are currently offered virtually, on Zoom. The Zoom link will appear on the session page six days before the session start date and after the registration closes. Only those who register for the session can see the link.

## Student experience

Core academic requirements

Forms

Thesis and practicum

Three Minute Thesis (3MT)

#UMGradGoals

### Workshops

Supporting Aboriginal Graduate Enhancement (SAGE)

Advisor Student Guidelines



UM

Faculty of Graduate  
and Postdoctoral Studies



# BioTalent Training Programs

Course Modules - Free for UM students until June 2026

## Technical Skills Courses


Enrolling in the suite of technical skills courses can advance your knowledge of producing scientific reports, working in a lab or factory, quality assurance and quality control and clinical practice. Online courses available include:

- Scientific Report Writing Fundamentals
- Good Laboratory Practice (GLP) Fundamentals
- Good Manufacturing Practice (GMP) Fundamentals
- Quality Assurance / Quality Control (QA/QC) Fundamentals
- Good Clinical Practice (GCP) Fundamentals

## Skills for Success Courses

The Skills for Success course series from BioTalent Canada exposes you to the knowledge and abilities you need to contribute, adapt and succeed in the workplace. These online courses include:

- Bio-economy Fundamentals
- Reading Fundamentals
- Writing Fundamentals
- Numeracy Fundamentals
- Document Use Fundamentals
- Communication Fundamentals
- Collaboration Fundamentals
- Problem Solving Fundamentals

**i** Register using  your UM Email address and enter coupon code 'umanitoba\_courses' during check out.

**i** It is recommended to add all courses as you will only be able to complete the registration process once. There is no penalty for not completing a course.



UM

Faculty of Graduate  
and Postdoctoral Studies

# Three Minute Thesis (3MT®)

[umanitoba.ca/3mt](https://umanitoba.ca/3mt)

Three Minute Thesis (3MT) is an annual competition for graduate students in a thesis-based program. The University of Manitoba 3MT is part of an overall strategy to highlight our graduate students, promote UM research and connect with the community.

## Awards for finalists

<a href="#">Dr. Archie McNicol Prize for first place</a>	
This prize recognizes the legacy of the late Dr. Archie McNicol who was an enthusiastic supporter of graduate students and the Three Minute Thesis competition.	<b>\$2,500</b>
UM Retirees Association Prize for second place	<b>\$1,250</b>
Third place	<b>\$750</b>
People's Choice Award	<b>UM Bookstore gift certificate</b>

## Gift cards for winners

The top three winners from each heat will receive a \$200 prize/giftcard.



[umanitoba.ca/mt180](https://umanitoba.ca/mt180)

## Meet the 2025 Winners



HANNAH ZHANG

**1st Place and  
Challengers Choice**



## Meet the 2025 winners



1<sup>ER</sup> PRIX DU JURY

**Camila Chacon**

Physiologie et physiopathologie,  
Doctorante



March 9 & 10, 2026 - Heats - Fort Garry Campus  
March 11, 2026 - Heat - Bannatyne Campus  
April 6, 2026 - Final Event Competition



**UM**

Faculty of Graduate  
and Postdoctoral Studies

# Career Compass: Graduate Studies

Map out your career pathway from the start of your academic journey!

Engage in opportunities to support your career success, while learning about the knowledge, skills and attributes that employers are seeking!

This guide is intended to support graduate students in their career planning. Though useful for all graduate students, there is significant guidance for Master's and PhD students in thesis or research-focused programs. Students in all programs, including terminal or professional programs are also encouraged to utilize other resources provided by Career Services, your academic department and relevant professional associations. [Career Services' occupational library](#) is a hub for many of these resources.

To use this tool, click on the titles below to expand each section. **Graduate Studies at UM** includes an outline of skills students can expect to gain during their studies. **Sample Jobs** provides a listing of occupational titles that graduates might choose to pursue. **What do employers want?** highlights the top ten skills and qualifications for jobs requiring graduate-level education. Within the sections **Getting Started**, **Intermediate Steps**, **Final Steps**, tips and resources are organized within four subsections:

1. Personal and Professional Development,
2. Career Planning Tips,
3. Work & Volunteer Experience,
4. Community & Research Connections.

For academic guidance:

- Refer to the [Academic Calendar](#) for program requirements and academic regulations.
- Utilize [#UMGradGoals](#) to help you meet key goals, actions and milestones as you progress through your studies. This tool is an academic success hub and includes academic reminders, and awards and funding information.

## Career Services

Career Month

Career planning

- Explore occupations

Volunteering during COVID-19

Employment resources for students

Career fairs

Career Mentor Program

UM Café: Ten Thousand Coffees

Discover Your Future in Healthcare

Co-ops and internships

Connect with and recruit students

Wage Subsidies for Employers

## Alumni stories

Adam N. Nepon | MBA - Indigenous Business and Economy

Emma Popowich | MA in French

W. Kurt Hildebrand | PhD in Physics

Michelle Keller | PhD in French

Neil Owens | PhD in Chemistry

## Skills you will gain during your GRADUATE STUDIES

All graduate students will gain a set of essential skills during their graduate program at the University of Manitoba. The Faculty of Graduate Studies has outlined some of these through the [Bona Fide Academic Requirements \(BFAR\)](#). Every graduate program has also outlined program specific BFARs that represent those essential skills gained in a particular program.

Broadly speaking, some critical skills that graduate students will gain include:

- **Communication skills** – Every graduate program requires students to learn key written and oral communication skills through their interactions in seminars, in practicums and through the successful defense of their oral examinations.
- **Organizational skills** – The successful navigation of a graduate program provides students with the ability to successfully manage their time, and to prioritize tasks required through their program, while at the same time maintaining a work-life balance.
- **Critical thinking** – Graduate work encourages students to critically read the literature and their own work as well as to integrate both from within and across literatures as they proceed through their coursework and prepare for key milestones such as candidacy exams, oral examinations, proposal defenses and other program requirements.
- **Problem solving** is a key component of graduate education. Students develop the ability to tackle small immediate problems as well as large long-term ones. Graduate education helps students learn to defend their solutions using the evidence at hand.
- **Teamwork** – Rarely is a graduate program undertaken in isolation. Instead, students have opportunities to interact on a vibrant campus and exchanges ideas with fellow students, faculty and staff. Graduate education can also allow students to interact with the broader academic community, both nationally and internationally.
- **Integrity** – Graduate programs also expose students to key concepts in their programs about the importance of ethics and integrity, both in their program related work and in their interactions with others.
- **Independence** – While learning to work with others is an essential skill that comes from graduate work, students also learn how to work independently and to assess their progress throughout the program.



UM

Faculty of Graduate  
and Postdoctoral Studies



# Funding and awards

UM provides over \$13 million in funding to graduate students through aid, stipends, scholarships and fellowships. These opportunities recognize your academic achievement, fund your research and help cover the costs of your education.

 On this page

[Browse the FGPS Award Database](#)



# 2025 Vanier Scholars



2025 UM Vanier Scholars clockwise from top left: Barret Monchka, Deanne Nixie Miao, Md. Abdul Aziz, Chamali Kodikara

# FACULTY OF GRADUATE STUDIES TRAVEL AWARD / GRANT

The Faculty of Graduate and Postdoctoral Studies allocates funds to assist Master's and Ph.D. students with costs for travel for presentations of papers, posters, or other creative work pertinent to their studies. Approved events include conferences, major festivals or other artistic events sponsored by recognized national or international organizations.

## Eligibility

- Applicants must be students in good standing, registered and enrolled full-time in a Masters or Ph.D. program at the time of the event.
- Applicants must have achieved a minimum degree grade point average (GPA) of 3.5 in the last 60 credit hours of study (or equivalent) and are in good standing.
- Students may not receive funding more than once at the Masters level or more than twice at the Ph.D. level.
- Papers / posters must be relevant to your program of study for presentation at a conference, festival or competition in the case of creative output endeavors, of a recognized national or international organization.

**• Students with a GPA of 3.50+ in the most recent 60 credit hours of study are eligible for the FGS Travel Award.**

**Students with a GPA of 3.00-3.49 in the most recent 60 credit hours are eligible for the FGS Travel Grant.**

- \$750 for travel in North America, which includes Canada, USA and Mexico (conference has to be outside of Winnipeg)
- \$1000 for international travel.



UM

Faculty of Graduate  
and Postdoctoral Studies

# Student Services

# Everything you need to thrive

University is an exciting, challenging time. At the University of Manitoba, we want to ensure you succeed—resources are available to support you every step of the way.

[Go directly to...](#)



Student supports and where to find them



12 UM support groups and workshops to try this term



Tools and resources you need for accessibility

## Need emergency support?

Call campus security at [204-474-9341](tel:204-474-9341) or use one of the links below.

[Emergency numbers and resources](#)

[Sexual violence help and info](#)

[International crisis information](#)

## Support for everyday life



### Safety

We take a proactive approach to safety and security on our campuses. Learn about our safety and security initiatives.



### Financial supports

Find out what awards, government aid and other funding is available to you.



### Housing

The experience of living on campus will enhance your educational and personal growth. Learn what options are available to you both on and off campus.



### Career planning

When options feel endless, it can be hard to choose a path. Career Services will help connect your academics, interests and strengths with experiences to build the knowledge, skills and attributes



### Accessibility

We provide support and advocacy for students with disabilities and accessibility issues, including visual, hearing, learning, mental health, medical, physical, injury-related or temporary.



### Child care

We are committed to providing services and supports that help our students and staff with children thrive, including on-campus child care, change tables, breastfeeding-friendly spaces and more.

## Find accessible and inclusive washrooms

Locate UTR and G/I washroom throughout our campuses.





Home / Student supports / Student services at Bannatyne campus

# Student services at Bannatyne campus

As a service hub for students and residents in the Rady Faculty of Health Sciences, we provide the supports and referrals you need for personal and academic success. All our services are free and confidential, and we work hard to accommodate your schedule.

## Need emergency support?

Call campus security at [204-789-3330](tel:204-789-3330) or use one of the links below.

Emergency numbers and resources

Sexual violence help and info

**Important Notice:** Student Services at Bannatyne Campus has returned to campus. We are now offering both in person and virtual appointments for students and residents. To book an appointment with any of our services, please contact [\(204\) 272-3190](tel:204-272-3190) or email [bcss@umanitoba.ca](mailto:bcss@umanitoba.ca). Staff are in the office responding Monday-Friday between 8:30am - 4:30pm, however there may be times when we are in meetings or delivering presentations across campus. If we are unavailable to answer the door, please connect to us through our confidential phone and voicemail [\(204\) 272-3190](tel:204-272-3190) or email [bcss@umanitoba.ca](mailto:bcss@umanitoba.ca).

**Please note: We ask you to not attend in-person services if you're experiencing any symptoms of physical illness – please call us instead and we will gladly switch your appointment to virtual.**



## Technical issues during exams?

Contact the IST service desk!

### Student supports

Academic supports

Career Services

Get involved

Student health and wellness

Military Support Office

Respectful conduct

[Student services at Bannatyne campus](#)

Accessibility for students

Student Affairs

UM Student Parents/Caregivers

Student Wellness







[Student supports](#) / [Academic supports](#) / [Academic Learning Centre](#)

# Academic Learning Centre



The Academic Learning Centre serves graduate and undergraduate, full and part-time students at UM. Make an appointment with a writing or study-skills tutor or sign up for one of our many workshops, all at no charge.

[Go directly to...](#)

## Academic Learning Centre

[Reading to Write Summer Program](#)

[Tutoring and group study sessions](#)

[Support for learning remotely](#)

[Virtual Study Hall](#)

[Academic Success Workshops](#)

[Resources for faculty and staff](#)

## Academic Learning Centre services

We help you strengthen your writing, studying and research skills.

- Individual tutoring
- Workshops
- Group study sessions (select courses)
- Tip sheets
- Videos
- English as an Additional Language resources

**Tired of studying alone? Looking for motivation? Join other students online in the Virtual Study Hall for Final Exam Prep**

**Make an appointment with a tutor**





English Language Centre

# English Language Centre

The English Language Centre (ELC) provides courses, tests, accommodations and individual support to students whose first language is not English in order to support academic success and participation in the University of Manitoba community.

English Language Centre

ELC staff directory

Intensive Academic English  
Program

Homestay accommodations

Part-Time Academic English  
Courses

**Subsidy  
available for  
ELC courses**



Covid-19 (Coronavirus) - Information and updates can be found at <http://umanitoba.ca/coronavirus>

The English Language Centre provides quality in-person and remote programming to students and community members whose first language is not English. Our programs may be suited for you if you need to meet university English language proficiency admission requirements, hope to improve your academic English or are already studying at UM and want to enhance your academic English language skills.

There are many reasons to study with the English Language Centre:

- Smaller class sizes allow you to receive more individualized attention from instructors.
- Our classrooms at UM's Fort Garry campus help you become familiar with the campus where many of our students go on to complete degree programs.
- Field trips, social activities, workshops and other events provide opportunities to meet people and learn about Canadian culture while practicing your language skills.
- Our homestay program lets you live with a local Canadian family while you're here.





- [Employee rights](#)
- [Workplace safety and health committees](#)
- [Incident reporting and worker's compensation](#)
- [EHS training program](#)
- [Hazard assessments and safe work procedures](#)
- [Personal protective equipment \(PPE\)](#)
- [Working alone](#)
- [Harassment and violence prevention programs](#)

# Student support at Migizii Agamik

Migizii Agamik - Bald Eagle Lodge is the home of the Indigenous Student Centre (ISC) student advisors and several student service providers. The student service providers all spend dedicated time at Migizii Agamik to make it easy for you to access the resources they offer.

## Indigenous Student Centre advisors

Student advisors at the Indigenous Student Centre are here to help you achieve your academic goals. ISC student advisors can help with answering your questions about admission or registration, creating an academic plan, clarifying university policies, connecting you with important services, resources, programming and much more.

[Learn more about the Indigenous Student Centre advisors](#)

## Join the Circle - Building Access

### Join the Circle - Building Access

Sign up to become a Circle member and gain access to Migizii Agamik – Bald Eagle Lodge after hours\*! Migizii Agamik is a great place to study and connect with the community. Circle members can access the computer lab and kitchen. Locker rentals are also available each September.

Migizii Agamik is open Monday-Friday from 8:30 a.m. to 4:30 p.m.

After-hours access requires Circle membership, which provides swipe access with your student ID between 4:30 p.m.-12 a.m. and from 7 a.m. to 8:30 a.m. There is no entry between 12 a.m.-7 a.m.



UM

Faculty of Graduate  
and Postdoctoral Studies



# International Centre

The International Centre is the University of Manitoba's hub for all things global. Whether you're a student looking to explore, a faculty member looking for international partners or a researcher hoping to work with us, we're here to support you.

[International student resources](#)

**i Service update:** If you would like to book an appointment to with one of our International Student Advisors (ISA) , please call our front desk at 204-474-8501, and our receptionist would be happy to let you know the current availability of appointments with an ISA. Please call our front desk for drop-in availability. Drop-in appointments are limited, and are offered on a first-come, first-served basis.

## International Centre

[Student exchange \(inbound\)](#)

[Student exchange \(outbound\)](#)

[International Student Survey 2021](#)

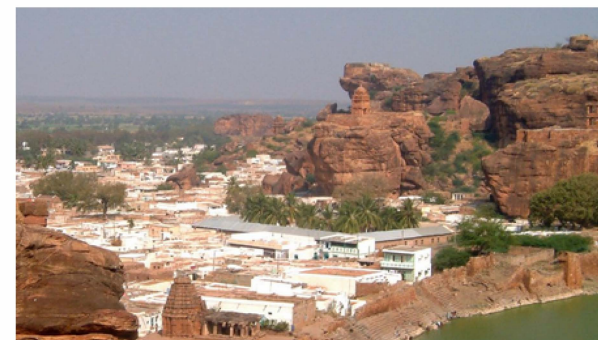
[International partnership agreements](#)

[International proposals and funding](#)

[International travel tools](#)

[Travel Risk Resources](#)

[International Governance](#)



UM

Faculty of Graduate  
and Postdoctoral Studies



# Graduate Student Information



## Welcome to the graduate student section of Learn at the Libraries!

This page will help connect you to UM Libraries' resources and services for students enrolled in the Faculty of Graduate Studies, including information about writing, citing, our workshop programming, and research support services. As always, we are here to help! If you need further assistance don't hesitate to contact the librarian for your subject librarian.

[Find Your Librarian](#)



# Registrar's Office

The Registrar's Office is a key information hub on campus. The Registrar's Office gathers information about enrolment, and academic and financial records. When you register with Aurora, you'll have access to registration material, including the course catalog.

## Registrar's Office

### [Documents and records](#)

[Registration](#)[Tuition and fees](#)[Final exams](#)[Grades](#)[Graduation and convocation](#)[Important dates and deadlines](#)

## Accessibility for students

Student Accessibility Services (SAS) is here to provide supports for students with disabilities and to foster success for your academic future. Reach out! If you need help and support as a student, we are here for you. Learn how to register or access accessibility resources below.

**i** We are on campus! Accessibility Coordinators and the Assistive Technologist are available for in-person, phone, email, or online appointments. Please contact an Accessibility Coordinator directly, the general office by phone 204-474-7423 or email [student\\_accessibility@umanitoba.ca](mailto:student_accessibility@umanitoba.ca) to book your appointment. The 520 University Centre office is available for in-person, phone and email inquiries Monday-Friday between 8:30am-4:30pm.

**i** Get the latest information on [service disruptions](#).

### Resources for students and instructors

More information on how Student Accessibility Services can provide support.



## How to register with Student Accessibility Services

Arranging for academic accommodations and support takes time. We highly encourage you to contact our office before you apply and immediately after accepting offers of admission in order to make your transition into university life successful.

**Step 1: Submit the Disability Assessment Form**



**Step 2: Meet an accessibility advisor**



**Step 3: Communicate with your instructors**



**Step 4: Follow up if you need more help**



### New students:

It's essential to hand in your Disability Assessment Form if you need specific supports. Download the form here (PDF).



Student supports / Academic supports / Student Advocacy

# Student Advocacy

Student Advocacy is a safe place for students. We help you navigate university processes and advocate for your rights as a student at UM.

## We're here to help

If anything in your personal or academic life is affecting your studies, contact our confidential intake assistant. Everything you tell us is kept completely confidential.



We do our utmost to respond to all inquiries by phone or email within 24 hours.

### Confidential intake assistant

[204-474-7423](tel:204-474-7423)

[stadv@umanitoba.ca](mailto:stadv@umanitoba.ca)

### Academic supports

Post-strike supports for students

Academic integrity

Academic advising

Academic Learning Centre

English Language Centre

First year planning

### Student Advocacy

- Authorized Withdrawal
- Working with a student advocate
- Case Management
- Understanding fairness at UM
- Faculty and staff assistance

The Libraries

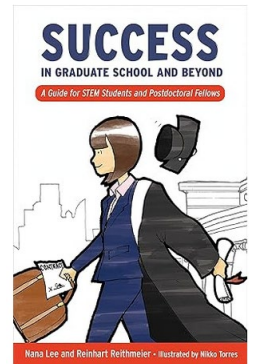
## We can help you if you face an allegation of academic misconduct

**UM**

Faculty of Graduate  
and Postdoctoral Studies

# 10 Easy ways to mess up in graduate school

1. Disregard policies and regulations. The [Academic Guide](#) and [Supplementary Regulations](#) are important resources. The [Advisor-Student Guidelines](#) link to UM policies.
2. Ignore deadlines until the last minute. Note these carefully, they are communicated by email.
3. Don't bother with timelines for your program. These are in the [Academic Guide](#).
4. Remain entirely focused on your own work.
5. Select an easy supervisory committee.
6. Have supervisory meetings only when your research is going well.
7. Meet with your supervisor only when necessary.
8. Keep your supervisor in the dark about your activities and responsibilities.
9. Ignore conflicts until they become a crisis. UM support services at can help.
10. Take unethical measures to ensure success. GRAD 7500 and 7300 will help outlines best practices.



**Based on Lee and Reithmeier 2024**



**UM**

Faculty of Graduate  
and Postdoctoral Studies

# The Apprenticeship Model

**Jones 2021**

- “Students who approach graduate education as a graduate ‘student’ i.e. one “who studies and/or who is enrolled for study at a school’ will neither seek nor recognize training opportunities that will help them success in their chosen careers. Thus, many graduate “students” are not competitive for the positions that they desire, nor are they optimally successful in the positions that they do procure.
- Conversely, students who view graduate training as an apprenticeship, i.e. an opportunity to participate in training activities that closely resemble the tasks that will be required in their profession, will likely master requisite skills and acquire experience that will make them competitive for the employment that they desire and, over time, these skills and experiences will contribute to their success in these positions.” p. 119



**UM**

Faculty of Graduate  
and Postdoctoral Studies



# Student Representation



# UMGSA

University of Manitoba Graduate Students' Association



# HSGSA

Health Sciences Graduate Students' Association

The University of Manitoba Graduate Postdoctoral Society (UMGPS) is the student-governed association representing graduate students at the University of Manitoba, which functions on all of its affiliate campuses

# Questions?