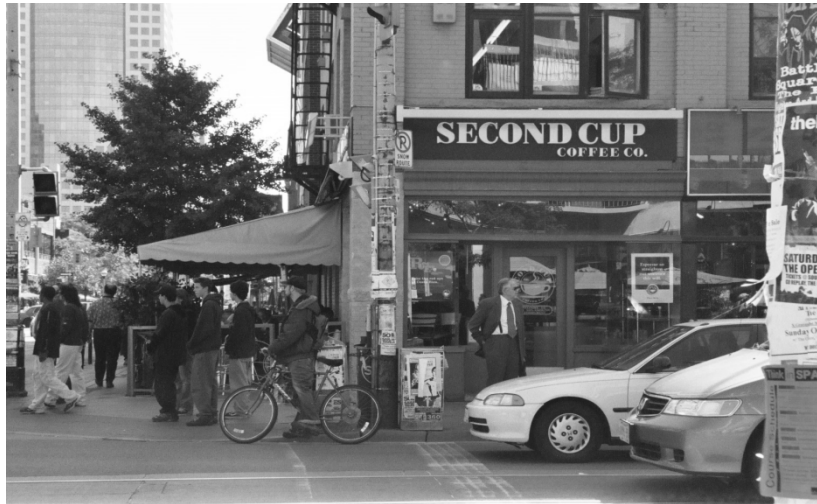


University of Manitoba  
Department of Sociology

## **SOC 2260 A01 Cities and Urban Life**

Tuesdays and Thursdays 11.30- 12.45, 301 Tier  
Winter 2012, 3 Credit Hours



Instructor: Dr. Sonia Bookman  
Office: 334 Isbister Building  
Telephone: 204 474 7832  
Email: [bookman@cc.umanitoba.ca](mailto:bookman@cc.umanitoba.ca)  
Office Hours: Tuesdays 1-2, Thursdays 10-11

### **Course Summary**

This course will look at some of the key approaches, issues and trends in urban sociology. It begins with an introduction to the development and current contours of urban sociology, considering both its roots and recent theoretical perspectives. The course will then consider aspects of urban politics, culture and society. One of the key themes of this course consists of social and spatial processes of segmentation and inequality within the city. In addressing this theme, the course will focus on suburbanization, gentrification, and ghettoization, as well as the implications of these processes for urban dwellers. The course will also be concerned with the shifting urban political economy, particularly focusing on the rise of the cultural economy and the emergence of the 'entrepreneurial city'. It will look at some of the implications of this new urban configuration, including a recent emphasis on the cultural framing of the city through place promotion and consumer-led regeneration initiatives, the expansion of public-private partnerships in urban affairs, the privatization of urban public space, issues of surveillance, and the changing nature of urban politics. The course will be organized around a combination of lectures, assigned readings, films, and discussions.

## **Course Objectives**

- To introduce students to key approaches and theoretical perspectives within urban sociology
- To offer students ways to understand and critically analyze contemporary forms of inequality and social organization in urban space
- To familiarize students with recent changes in urban political economies, including the rise to prominence of the entrepreneurial city, the cultural economy, and consumption in contemporary cities
- To develop an understanding of various approaches to, and implications of the cultural framing of the city and urban space
- To look at the shifting nature of urban politics and urban public space

## **Required Textbooks**

Hiller, H. (ed.) (2010) *Urban Canada*, 2<sup>nd</sup> ed (Toronto: Oxford University Press).

Jayne, M. (2006) *Cities and Consumption* (London: Routledge).

**Note: Additional required readings will be on reserve in the Dafoe library.**

## **Further Recommended Reading**

(These texts are available in the library, and provide a good overview of some of the major approaches, themes, and issues in urban sociology)

Bridge, G., and Watson, S. (eds.) (2002) *The Blackwell City Reader* (Oxford: Blackwell).

Kleniewski, N. (ed.) (2005) *Cities and Society* (Oxford: Blackwell).

Macionis, J. and Parrillo, V. (2007) *Cities and Urban Lives*, 4<sup>th</sup> ed (Upper Saddle River: Pearson Prentice Hall).

Savage, M., Warde, A., and Ward, K. (2003) *Urban Sociology, Capitalism and Modernity*, 2<sup>nd</sup> edn (Basingstoke: Palgrave Macmillan).

## Assessment

### Assignments

- Students will complete two short written assignment designed to provide an opportunity to explore the topics covered in class in more depth, and to help develop the quality of your research, writing and communication skills. Instructions will be handed out in class.

### Mid-term Test

- A test of 60 minutes will be held in-class. The test will comprise a mix of short and long answer questions. Questions will cover material presented in lectures, readings, films, and class exercises. *Students should note that the instructor will not reschedule this test for any reason other than medical.*

### Term Essay

- Students are required to write an essay of 2500 words. The essay topic will be chosen by the student from a list of possible essay questions, which will be distributed in class, OR the student can choose to write on a topic of his or her choice, subject to approval by the instructor. Students are responsible for contacting the instructor to obtain approval of such independently selected essay topics PRIOR to writing the essay.

### Final Term Test

- A test of 60 minutes will be held in-class. Students will be presented with a list of possible questions, and asked to choose a fixed number of questions and answer these in mini-essay format. Questions will cover material presented in lectures, readings, films, and class exercises, from the mid-term test onward. The final term test is non-cumulative. Study questions will be provided at least one week prior to the test. For this class there will be no exam held during the examination periods. *Students should note that the instructor will not reschedule this test for any reason other than medical.*

**Note:** Students are required to submit papers in *hard copy* form! Electronic copies will not be accepted. *Do not submit essays by email.* Students are instructed to *always keep a personal copy of any submitted work* in the case that they are required to submit another copy.

## Grade Weights

Assignments 30% (2 x 15% each)

Mid-term Test 20%

Term Essay 30%

Final Term Test 20%

## Grade Distribution

<i>Letter Grade</i>	<i>Percentage</i>	<i>GPA</i>	<i>Description</i>
A+	91-100%	4.5	Exceptional
A	80-90%	4.0	Excellent
B+	75-79%	3.5	Very Good
B	70-74%	3.0	Good
C+	65-69%	2.5	Satisfactory
C	60-64%	2.0	Adequate
D	50-59%	1.0	Marginal
F	49% or less	0	Failure

## Late Submissions, Missed Tests and Assignments

Late papers and assignments will be penalized 3% per day late (including weekends). Medical documentation will normally be required to waive this penalty. However, if you know before the due date that a paper will be late you should contact me immediately. Extensions may be granted under extenuating circumstances, entirely at the instructor's discretion, ONLY if the student contacts the instructor PRIOR to the deadline.

Missing a test is a serious problem and is likely to result in a grade of 0. Only documented reasons will be accepted for missing a test. If you miss the test for health-related or emergency reasons, you should a) provide advance notice, if possible, by phoning or emailing the instructor, then b) directly contact the instructor *as soon as possible* to arrange a makeup test. Note that it is the student's responsibility for initiating a makeup test. Ordinarily, arrangements must be made within one week of the missed test; requests made later than one week will normally be denied. Under no circumstances will a makeup test be offered more than two weeks after the scheduled test.

## Missed Films

If you miss a film during a lecture you will need to view it at an alternative time. Making this arrangement is a student responsibility. To view a missed film, you will need a form that is available from 123 Fletcher Argue and which will require the instructor's signature. It is your job to bring the form to the instructor for signing during office hours or by appointment.

## Academic Integrity

Academic dishonesty is a serious offence. Students should acquaint themselves with the University's policy on 'Plagiarism and Cheating' (Section 8.1) and 'Personation at Examinations' (Section 5.2.9) found in the University of Manitoba Undergraduate Calendar. *Penalties for academic dishonesty are severe and range from failing the course to expulsion from the University.* Guidelines for properly referencing your papers will be distributed in class.

**Note:** The Faculty of Arts reserves the right to submit student work that is suspected of being plagiarized to Internet sites designed to detect plagiarism.

### **Religious Holidays**

The University of Manitoba acknowledges the right of all students to observe recognized holy days of their faith. You will need to inform the instructor in writing of your intended absence(s) at least three weeks in advance, particularly if such absence(s) coincide with the set mid-term test date.

### **Special Learning Needs**

Students with special learning needs (who, for legitimate reasons, require extra time to write a test, or who require aids or other supports) should introduce themselves to the instructor during the first week of the course in order to organize suitable accommodation and assessment arrangements.

### **Disruptions**

Disruptions due to excessive talking or early departures from the classroom are especially distracting to large classes. Please be considerate and respectful to the needs and rights of others in the class. Students should be aware that persistent disruption may result in disbarment from the course. Any student who has a legitimate reason for leaving class early should inform the instructor at the beginning of class.

### **Voluntary Withdrawal**

Last day for voluntary withdrawal from the course without academic penalty is **March 16, 2012**.

## **Student and Instructor Responsibility**

My responsibility as your instructor begins with the University's ROASS Policy and extends to creating a safe, cooperative and stimulating learning environment for students. As your instructor, I have selected texts and organized classroom time to meet the objectives of this course. Lectures are designed to help you understand and extend the concepts and ideas discussed in your texts and in the films. I comply fully with all University of Manitoba policies regarding teaching.

Student responsibilities include:

- Students are responsible for their own learning. You are expected to do readings in advance of class and are required to come prepared. You will often need to independently cover material in the textbooks (since not everything in the textbook will be directly addressed in class). Tests will draw on assigned readings as well as the lectures.
- If you are unclear about material or have academic concerns or questions, it is your responsibility to ask for help. I will be pleased to provide help during my office hours or by appointment. Students are warmly invited to drop by during office hours or to arrange an appointment to discuss any issues, concerns, or questions related to the course. Students are also responsible to track their own progress in the course, and to take action if you discover you are failing tests or papers.
- Students are responsible for complying with the policies on grades and tests, including policies on missed tests. You will find all course policies listed in this syllabus – please review it regularly. If you misplace this syllabus or a term schedule, you can request one by emailing the instructor.
- Students are asked to contribute to the creation and maintenance of a collegial learning environment; one in which all can develop as individuals and scholars, and in which the free and respectful exchange of ideas occurs. In order to achieve this, students are especially asked to be considerate and respectful of the needs and rights of other students in the class. Whispering and talking is especially inappropriate, since it bothers other students. Students who talk in class will be asked to leave the classroom. Other disruptions include late arrivals, early departures, mobile phone use, and other behaviour deemed inappropriate by the instructor or other students. Students should be aware that persistent disruption may result in disbarment from the course. Any student who has a legitimate reason for leaving class early should inform the instructor at the beginning of class and sit in a seat near the door to minimize disruption.

**Lecture Topics and Readings**  
***Handed out on the first day of term***